

**OFFICE / RETAIL**



**OFFICE FOR LEASE**

**1520**

**PRUDENTIAL DR**  
Jacksonville, FL 32207

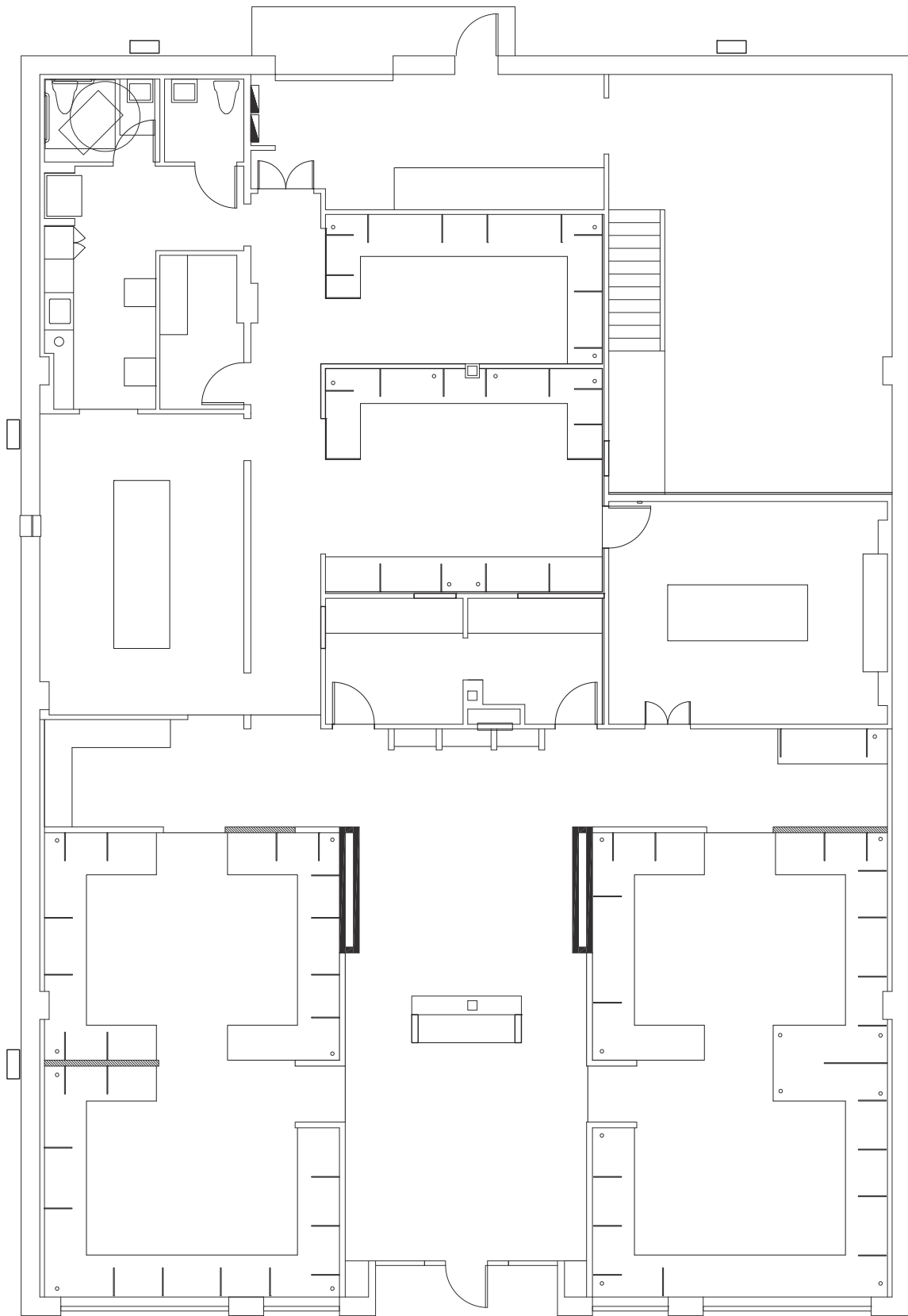
- Built in 1926, this 5,670 sf freestanding building is situated at the corner of Prudential Dr and Kings Ave
- Updated modern layout and finishes
- Within walking distance of many popular restaurants and retailers, as well as the Riverwalk
- Central Southbank location with immediate access to I-95
- 15 Onsite parking spaces with additional parking available across the street



**CUSHMAN &  
WAKEFIELD**

# FLOOR PLAN

KINGS AVE

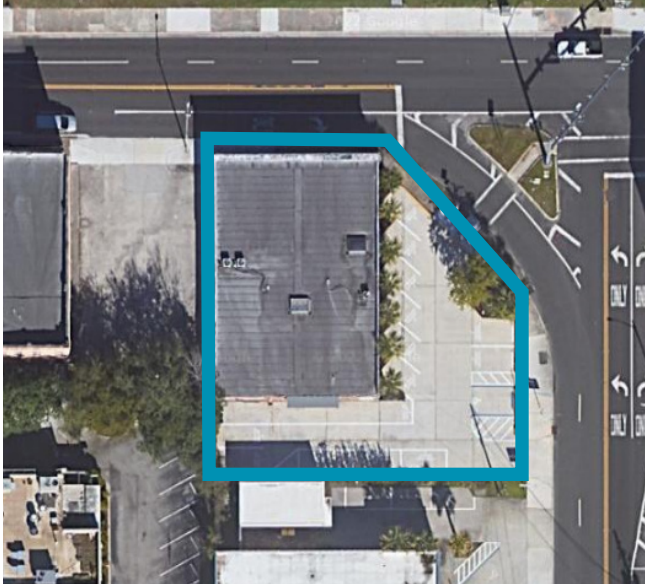


PRUDENTIAL DR



# PROPERTY IMAGES

1520 PRUDENTIAL DRIVE





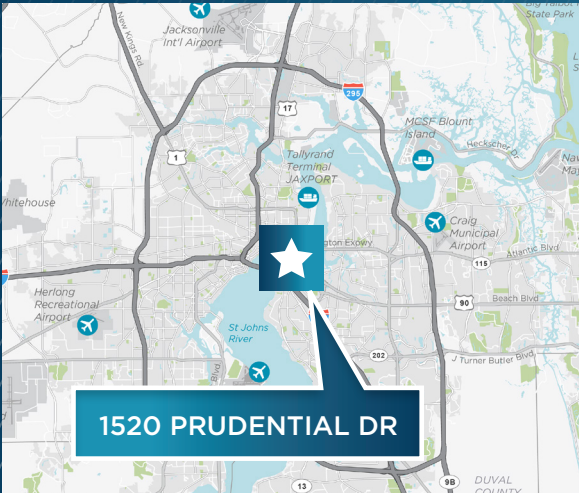
# LOCATION

AREA  
RESIDENTIAL



1520 PRUDENTIAL DR

BEARD PIG  
RESTAURANT & BEEF CATERING



1520 PRUDENTIAL DR

## 1520 PRUDENTIAL DR

# 10,400

AADT ON PRUDENTIAL DR & KINGS AVE

# CCBD

COMMERCIAL ZONING

# 15

ONSITE PARKING SPACES

## JACKSONVILLE, FL 32207

### CONTACT

TRACI JENKS  
Senior Director  
+1 904 380 8333  
traci.jenks@cushwake.com

©2022 Cushman & Wakefield. All rights reserved. The material in this presentation has been prepared solely for information purposes, and is strictly confidential. Any disclosure, use, copying or circulation of this presentation (or the information contained within it) is strictly prohibited, unless you have obtained Cushman & Wakefield's prior written consent. The views expressed in this presentation are the views of the author and do not necessarily reflect the views of Cushman & Wakefield. Neither this presentation nor any part of it shall form the basis of, or be relied upon in connection with any offer, or act as an inducement to enter into any contract or commitment whatsoever. NO REPRESENTATION OR WARRANTY IS GIVEN, EXPRESS OR IMPLIED, AS TO THE ACCURACY OF THE INFORMATION CONTAINED WITHIN THIS PRESENTATION, AND CUSHMAN & WAKEFIELD IS UNDER NO OBLIGATION TO SUBSEQUENTLY CORRECT IT IN THE EVENT OF ERRORS.

 CUSHMAN & WAKEFIELD