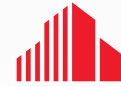


OFFICE SPACE FOR LEASE

MOUNTAIN STATES BUILDING

289 24th Street, Ogden, UT 84401



CUSHMAN &
WAKEFIELD



Property Highlights

- Available - Suite 150: 2,286 SF
- Lease Rate: \$13.00 PSF/NNN
- Estimated CAM: \$6.23 PSF
- Ample parking
- Excellent location on the corner of 24th and Grant just off of the I-15 24th street freeway onramp
- Located next to the Marriott Hotel and the Federal building within walking distance to many amenities on 25th Street and at the Junction



Contact

JULIE BROWN

Senior Associate
+1 801 784 5317
julie.brown@cushwake.com

APRIL HARTZELL

Associate
+1 801 784 5319
april.hartzell@cushwake.com

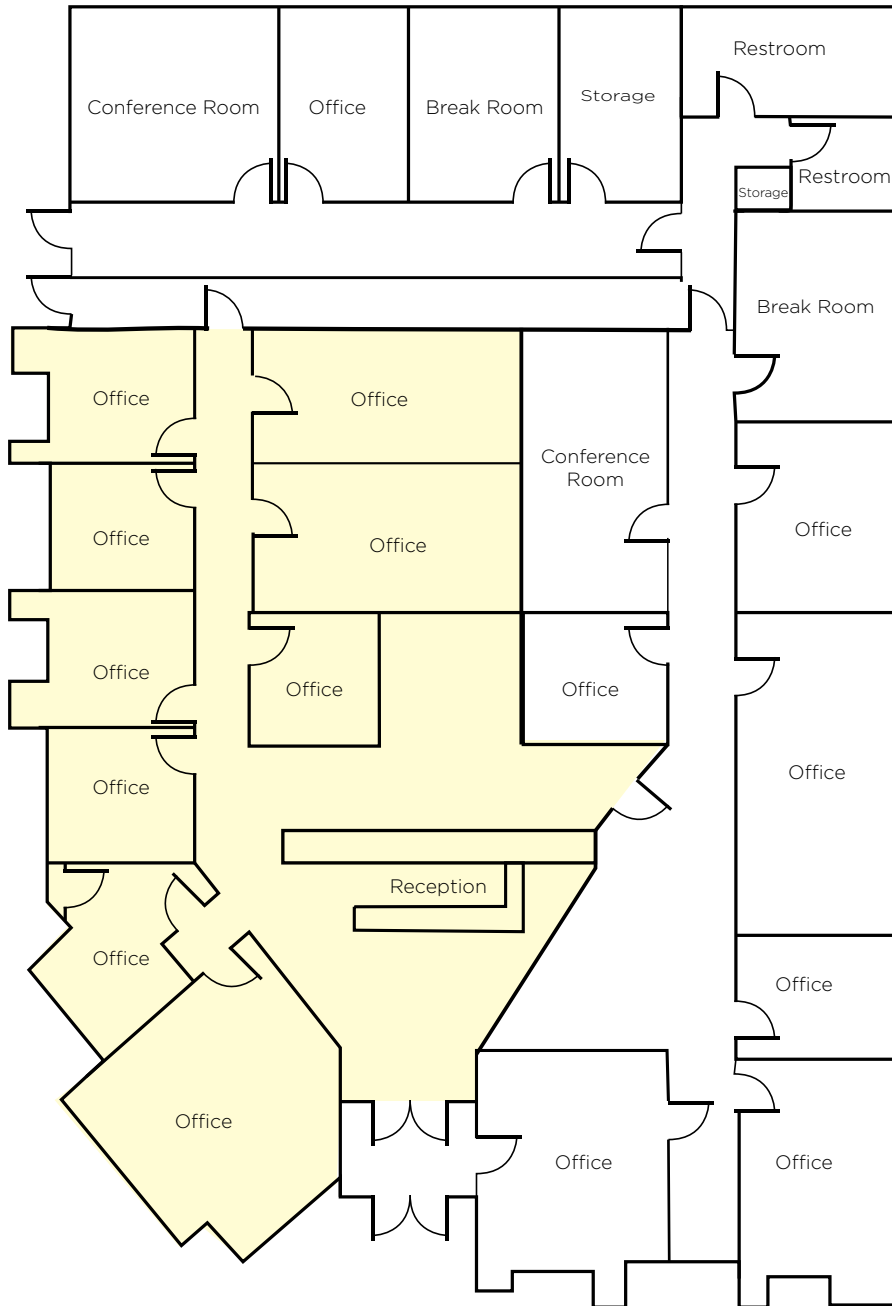
2225 Washington Blvd, #175
Ogden, Utah 84401
Main +1 801 525 3000
cushmanwakefield.com

OFFICE SPACE FOR LEASE

Mountain States Building | 289 24th Street, Ogden, UT



FLOOR PLAN - SUITE 150 | 2,286 SF



Contact

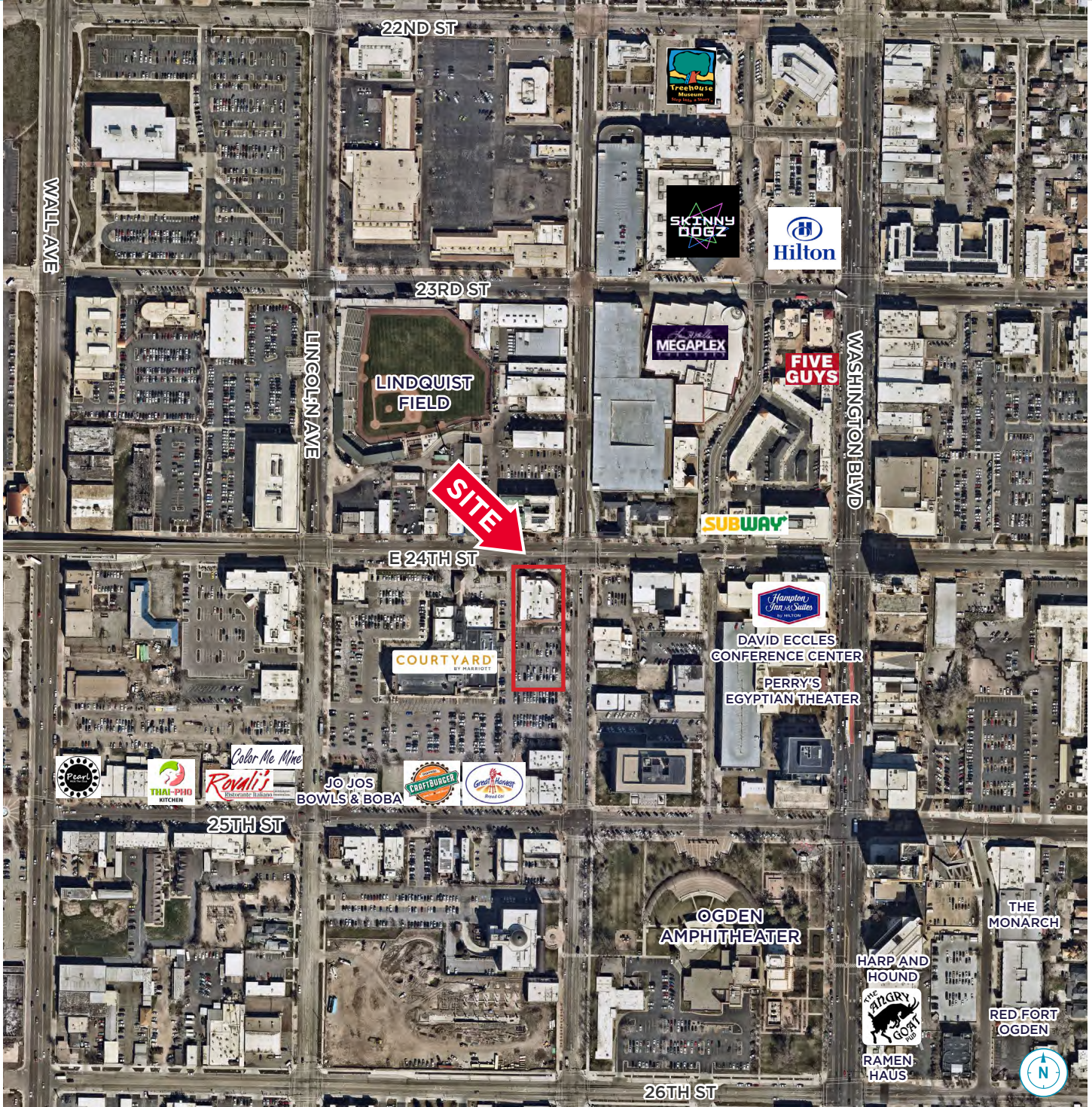
JULIE BROWN
Senior Associate
+1 801 784 5317
julie.brown@cushwake.com

APRIL HARTZELL
Associate
+1 801 784 5319
april.hartzell@cushwake.com

2225 Washington Blvd, #175
Ogden, Utah 84401
Main +1 801 525 3000
cushmanwakefield.com

FOR LEASE

Mountain States Building | 289 24th Street, Ogden, UT



Contact

JULIE BROWN
Senior Associate
+1 801 784 5317
julie.brown@cushwake.com

APRIL HARTZELL
Associate
+1 801 784 5319
april.hartzell@cushwake.com

2225 Washington Blvd, #175
Ogden, Utah 84401
Main +1 801 525 3000
cushmanwakefield.com

Cushman & Wakefield Copyright 2022. No warranty or representation, express or implied, is made to the accuracy or completeness of the information contained herein, and same is submitted subject to errors, omissions, change of price, rental or other conditions, withdrawal without notice, and to any special listing conditions imposed by the property owner(s). As applicable, we make no representation as to the condition of the property (or properties) in question. (path: G:\UT\SL1\Shared\Apps\Gigas\1 - Projects\Brown_J\1 - Flyers\289_24thStreet_Flyer)