

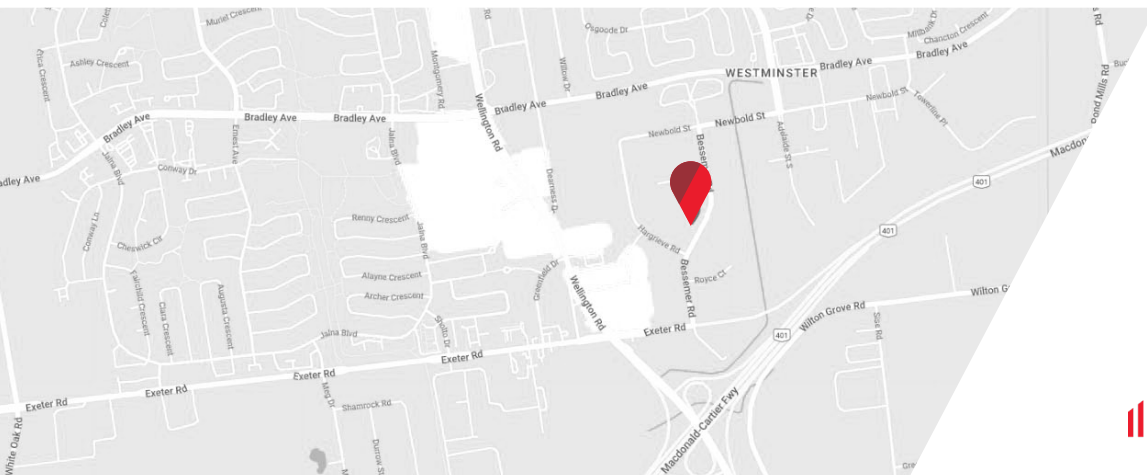


BESSEMER BUSINESS PARK WAREHOUSE SPACE | **FOR LEASE**

80

BESSEMER ROAD | UNIT 3/4

*London, ON N6E 1R1*



**CUSHMAN &  
WAKEFIELD**

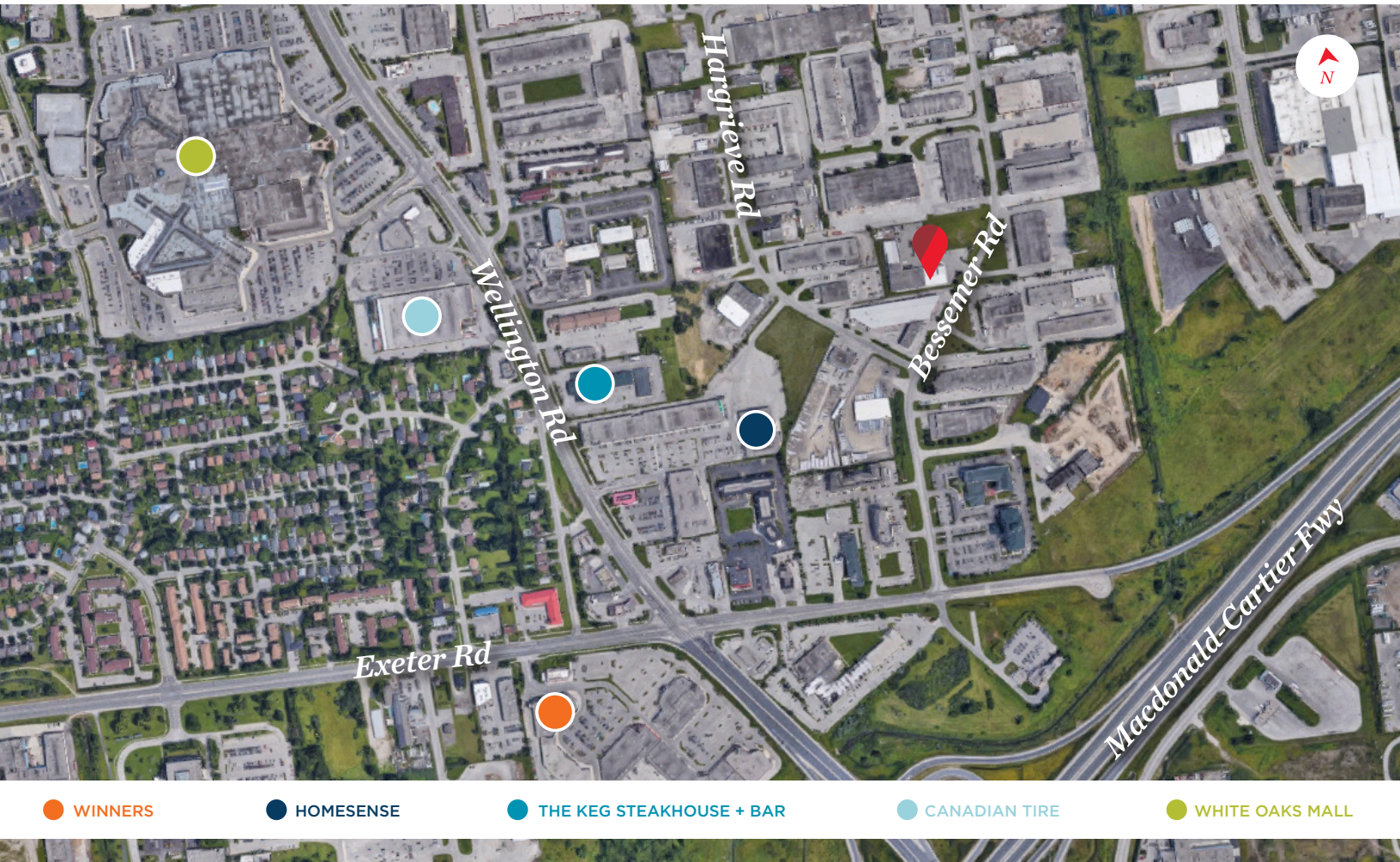
Southwestern Ontario

# ABOUT THE PROPERTY

Bessemer Road Business Park warehouse space in South London

Unit	Available Space	Asking Rent	Additional Rent
3/4	4,444 SF	\$9.00 PSF Net*	\$6.00 PSF**
*\$0.50 annual net rent escalation			
**Inclusive of building Insurance, common area maintenance, taxes and water			

- **Zoning: LI2/LI7** – permitted uses include: warehousing, wholesaling, custom workshop uses and many more
- **Grade Level Doors:** (10'x10')
- **Clear Height:** Ranging from 12'2" to 16'4" (sloped ceiling)
- 100% Warehouse space
- Big bright windows at the front of the unit
- AC ducting and led motion sensor lighting in place
- The location is ideal for businesses looking for close proximity to the highway
- Approx. 1 minute to the Wellington/Hwy 401 ramp



● WINNERS    
 ● HOMESENSE    
 ● THE KEG STEAKHOUSE + BAR    
 ● CANADIAN TIRE    
 ● WHITE OAKS MALL

**DAVID JONGERDEN**  
 Sales Representative  
 519 438 9125  
 david.jongerden@cushwakeswo.com

**CUSHMAN & WAKEFIELD**  
 SOUTHWESTERN ONTARIO  
 850 Medway Park Dr, Suite 201  
 London, Ontario N6G 5C6  
 www.cushwakeswo.com

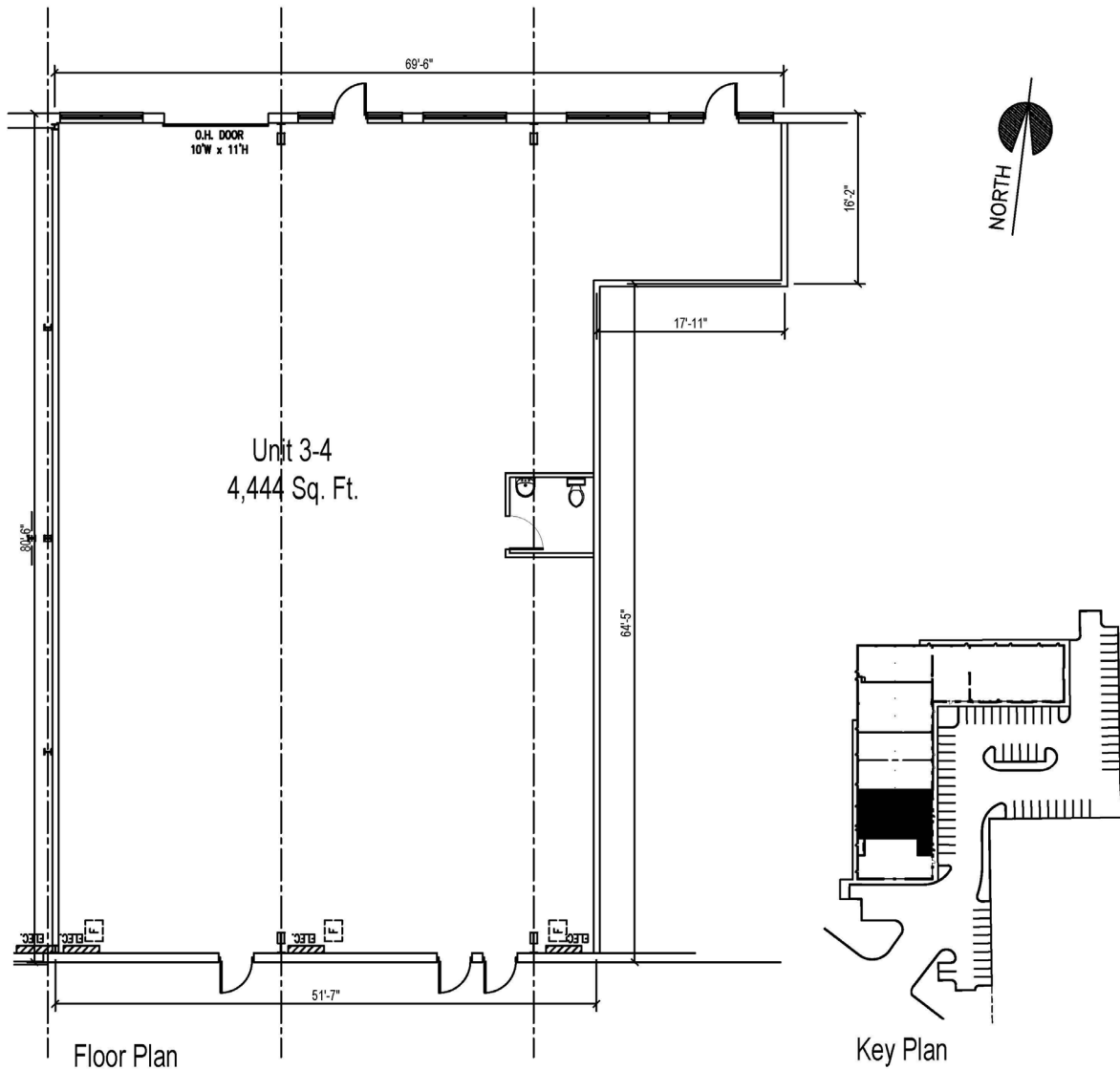

**CUSHMAN & WAKEFIELD**  
 Southwestern Ontario

©2024 Cushman & Wakefield Southwestern Ontario, Real Estate Brokerage, Independently Owned and Operated. A Member of the Cushman & Wakefield Alliance. This information has been obtained from sources believed to be reliable but has not been verified. No warranty or representation, express or implied, is made as to the condition of the property (or properties) referenced herein or as to the accuracy or completeness of the information contained herein, and same is submitted subject to errors, omissions, change of price, rental or other conditions, withdrawal without notice, and to any special listing conditions imposed by the property owner(s). Any projections, opinions or estimates are subject to uncertainty and do not signify current or future property performance. All rights reserved.

# FLOOR PLAN

## BESSEMER BUSINESS PARK

### UNIT 3-4, 80 Bessemer Rd., London, ON



03-19-18

**DAVID JONGERDEN**

*Sales Representative*

519 438 9125

david.jongerden@cushwakeswo.com

**CUSHMAN & WAKEFIELD**  
SOUTHWESTERN ONTARIO  
850 Medway Park Dr, Suite 201  
London, Ontario N6G 5C6  
www.cushwakeswo.com



**CUSHMAN & WAKEFIELD**

Southwestern Ontario

# PROPERTY PHOTOS



**DAVID JONGERDEN**

*Sales Representative*

519 438 9125

david.jongerden@cushwakeswo.com

**CUSHMAN & WAKEFIELD**  
SOUTHWESTERN ONTARIO  
850 Medway Park Dr, Suite 201  
London, Ontario N6G 5C6  
www.cushwakeswo.com

 **CUSHMAN & WAKEFIELD**  
Southwestern Ontario

©2024 Cushman & Wakefield Southwestern Ontario, Real Estate Brokerage, Independently Owned and Operated. A Member of the Cushman & Wakefield Alliance. This information has been obtained from sources believed to be reliable but has not been verified. No warranty or representation, express or implied, is made as to the condition of the property (or properties) referenced herein or as to the accuracy or completeness of the information contained herein, and same is submitted subject to errors, omissions, change of price, rental or other conditions, withdrawal without notice, and to any special listing conditions imposed by the property owner(s). Any projections, opinions or estimates are subject to uncertainty and do not signify current or future property performance. All rights reserved.