



CUSHMAN &
WAKEFIELD

THE DUFFEY LOFTS

548 N WASHINGTON AVE

MINNEAPOLIS, MN



*Retail / Office
Space for Lease*



Property Highlights

- 5,760 sf vacancy with raised patio
- Strong visibility from Washington & 6th traffic signal
- Black Iron Venting available
- Blade and building signage approved
- Situated under 188 micro-unit apartment complex
- 17,000+ housing units with-in one (1) mile
- The top “High-street” trade area in the market
- Highest pedestrian counts in MN

Demographics

240,231

POPULATION

34

MEDIAN AGE

\$54,614

MEDIAN HOUSEHOLD INCOME

103,652

HOUSING UNITS

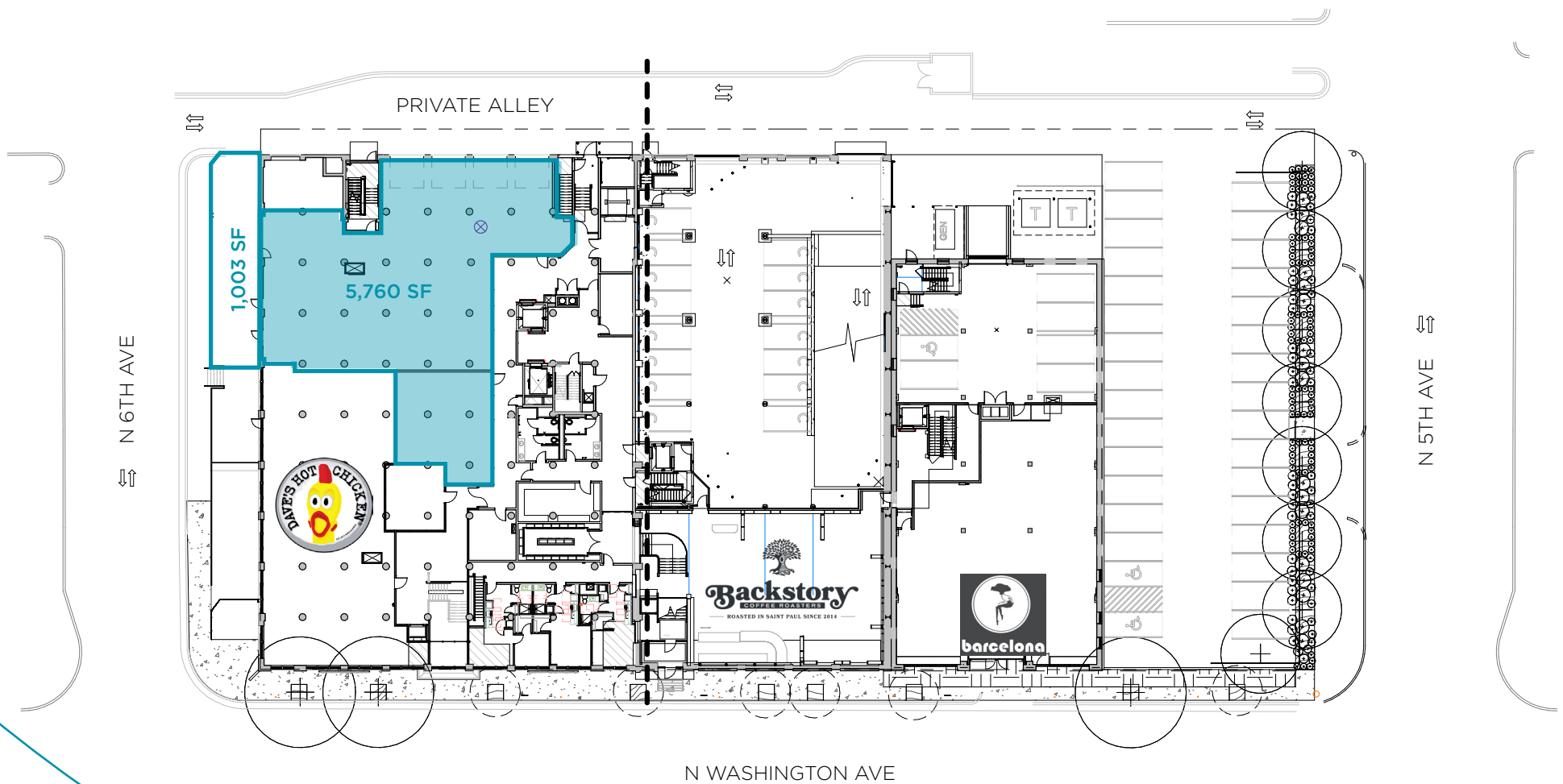
269,947

DAYTIME POPULATION

(2023 data, within 3 miles)

548 N Washington Ave, Minneapolis, MN

Site Plan



TRUE NORTH



PLAN NORTH

Amenities Map



RETAIL

1. Whole Foods Market
2. Trader Joe's
3. City Center
4. Target
5. Nicolett Mall
6. Parc Shop
7. Requisite



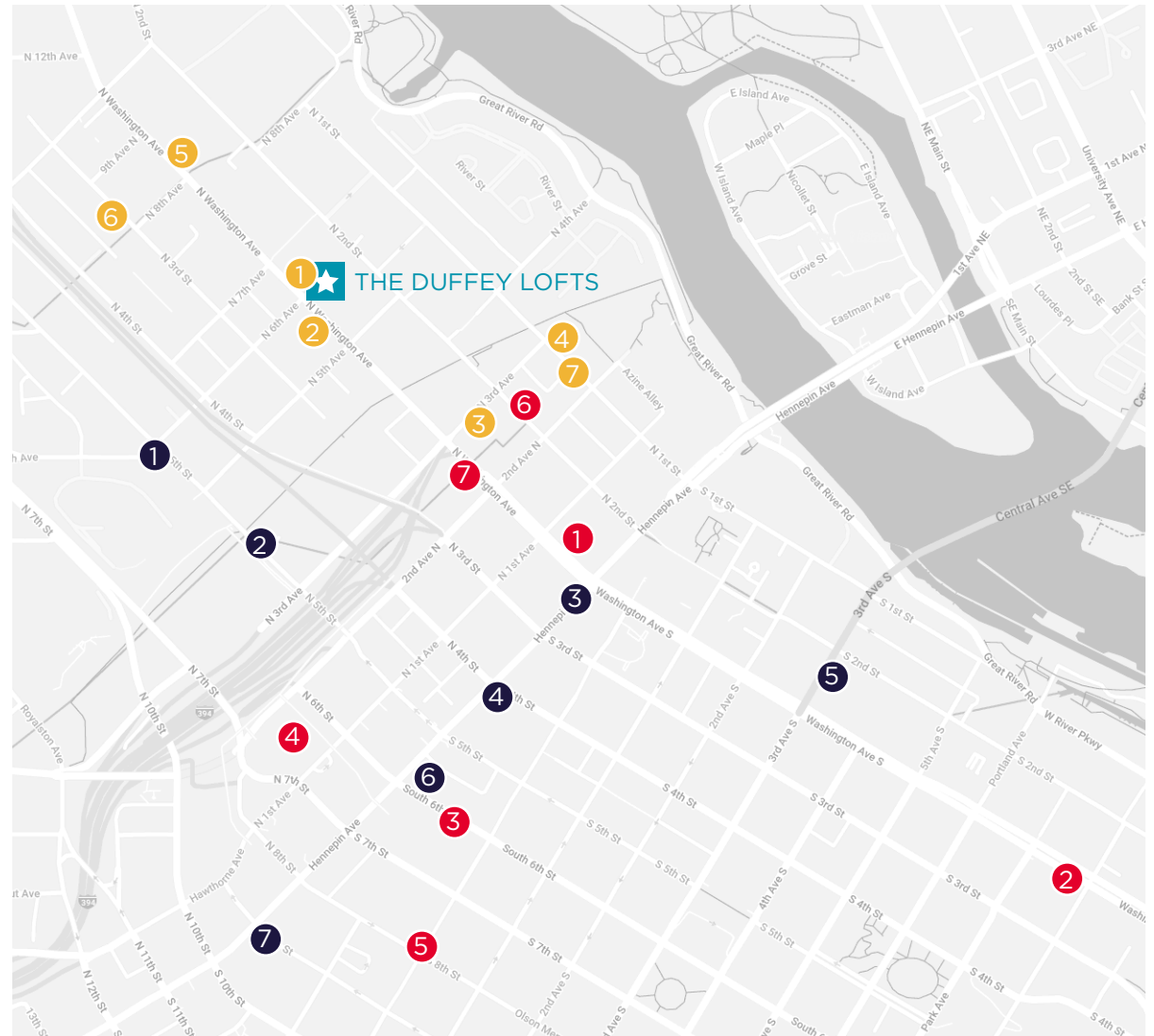
RESTAURANTS

1. Black Sheep Coal Fired Pizza
2. NOLO's Kitchen & Bar
3. The Monte Carlo
4. Maison Margaux
5. Bar La Grassa
6. Butcher & The Boar
7. Spoon and Stable



HOTEL

1. Element Minneapolis Downtown
2. Sonder at North Loop Green
3. Four Seasons Hotel Minneapolis
4. AC Hotel Minneapolis Downtown
5. Renaissance Minneapolis Hotel, The Depot
6. Embassy Suites by Hilton Minneapolis Downtown
7. The Chambers Hotel





CONTACT

TOM MARTIN

Senior Director (Retail)

+1 952 893 8232

tom.martin@cushwake.com

TOM TRACY

Executive Director (Office)

+1 612 280 3299

tom.tracy@cushwake.com

KATIE TUFFORD

Senior Director (Office)

+1 612 413 5007

katie.tufford@cushwake.com

HARRISON RUST

Associate (Office)

+1 651 331 6425

harrison.rust@cushwake.com



©2024 Cushman & Wakefield. All rights reserved. The information contained in this communication is strictly confidential. This information has been obtained from sources believed to be reliable but has not been verified. NO WARRANTY OR REPRESENTATION, EXPRESS OR IMPLIED, IS MADE AS TO THE CONDITION OF THE PROPERTY (OR PROPERTIES) REFERENCED HEREIN OR AS TO THE ACCURACY OR COMPLETENESS OF THE INFORMATION CONTAINED HEREIN, AND SAME IS SUBMITTED SUBJECT TO ERRORS, OMISSIONS, CHANGE OF PRICE, RENTAL OR OTHER CONDITIONS, WITHDRAWAL WITHOUT NOTICE, AND TO ANY SPECIAL LISTING CONDITIONS IMPOSED BY THE PROPERTY OWNER(S). ANY PROJECTIONS, OPINIONS OR ESTIMATES ARE SUBJECT TO UNCERTAINTY AND DO NOT SIGNIFY CURRENT OR FUTURE PROPERTY PERFORMANCE.