

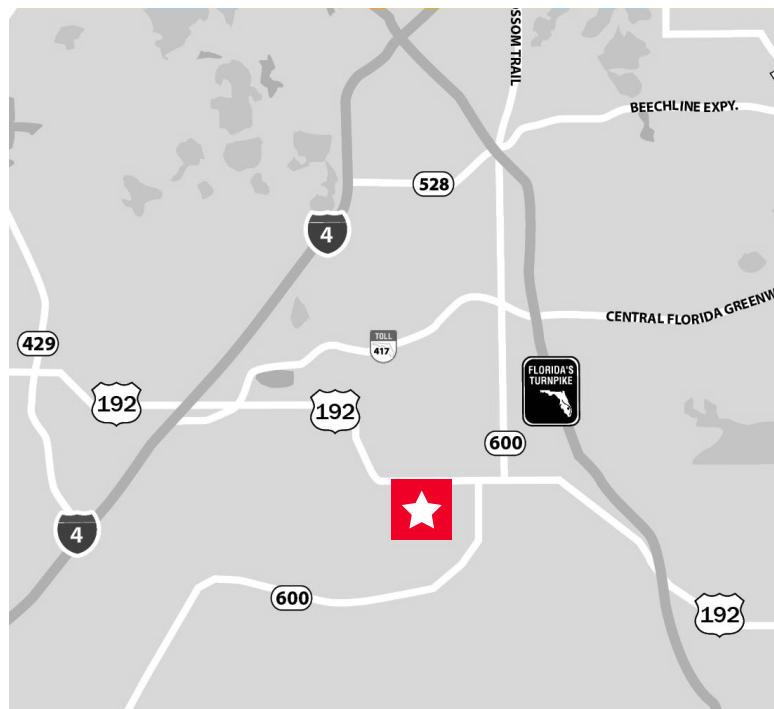
FOR LEASE

3700 Commerce Blvd. Kissimmee, Florida 34741



PROPERTY HIGHLIGHTS

- **Building size:** 82,200 SF
- **Available space:** 14,000 SF
- Ample parking around building
- Completely fenced and gated with building key card access
- Close proximity to shopping and dining plazas and minutes from Disney World
- Located 1/2 mile south of US-192
- Kissimmee Municipal Airport borders this property to the south



MARK STRATMAN

Senior Director

+1 407 448 1351

mark.stratman@cushwake.com



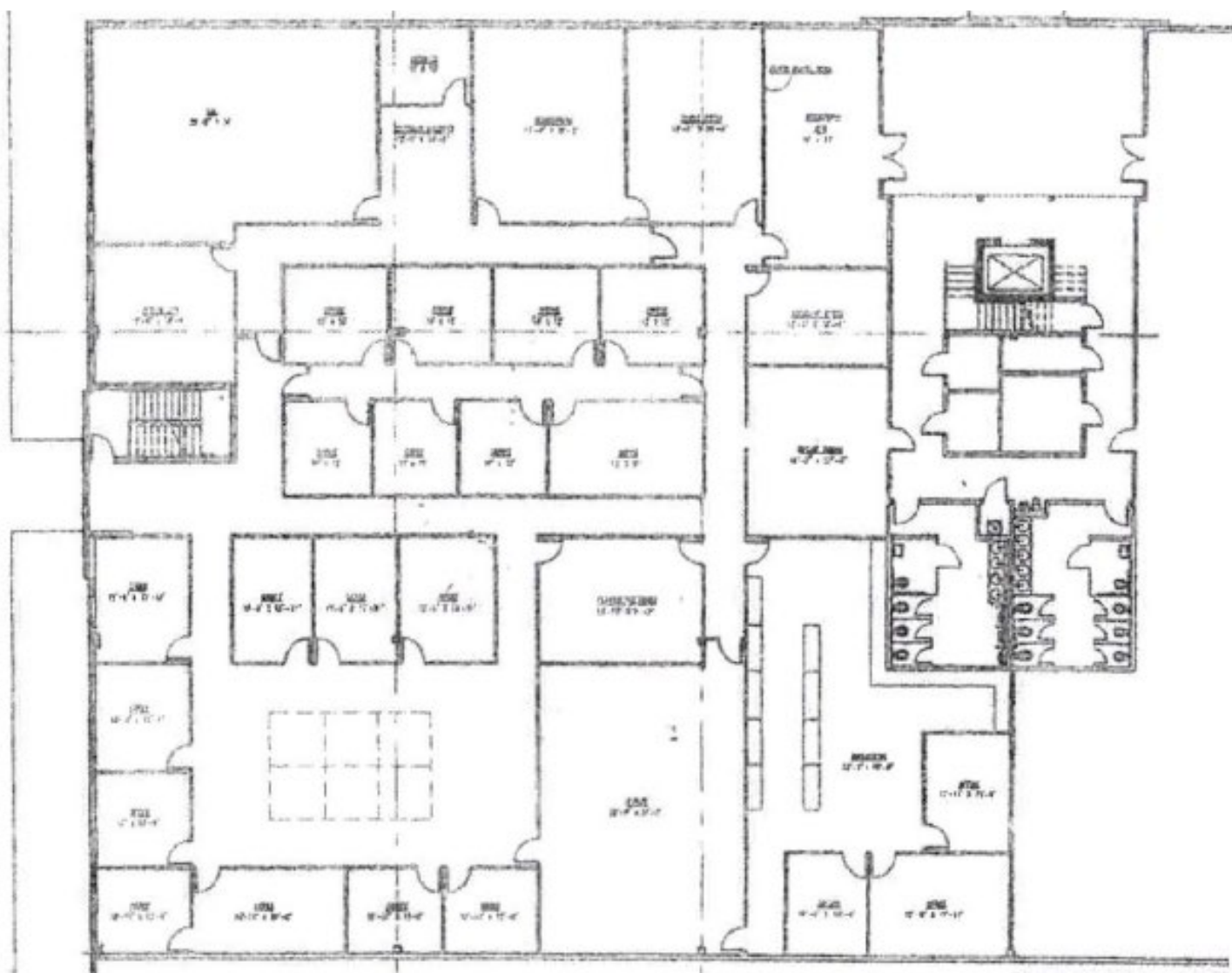
CUSHMAN &
WAKEFIELD

cushmanwakefield.com

3700 Commerce Blvd.
Kissimmee, Florida 34741

FOR LEASE

SECOND FLOOR: 14,000 SF



MARK STRATMAN

Senior Director

+1 407 448 1351

mark.stratman@cushwake.com



**CUSHMAN &
WAKEFIELD**

cushmanwakefield.com

©2024 Cushman & Wakefield. All rights reserved. The information contained in this communication is strictly confidential. This information has been obtained from sources believed to be reliable but has not been verified. No warranty or representation, express or implied, is made as to the condition of the property (or properties) referenced herein or as to the accuracy or completeness of the information contained herein, and same is submitted subject to errors, omissions, change of price, rental or other conditions, withdrawal without notice, and to any special listing conditions imposed by the property owner(s). Any projections, opinions or estimates are subject to uncertainty and do not signify current or future property performance.