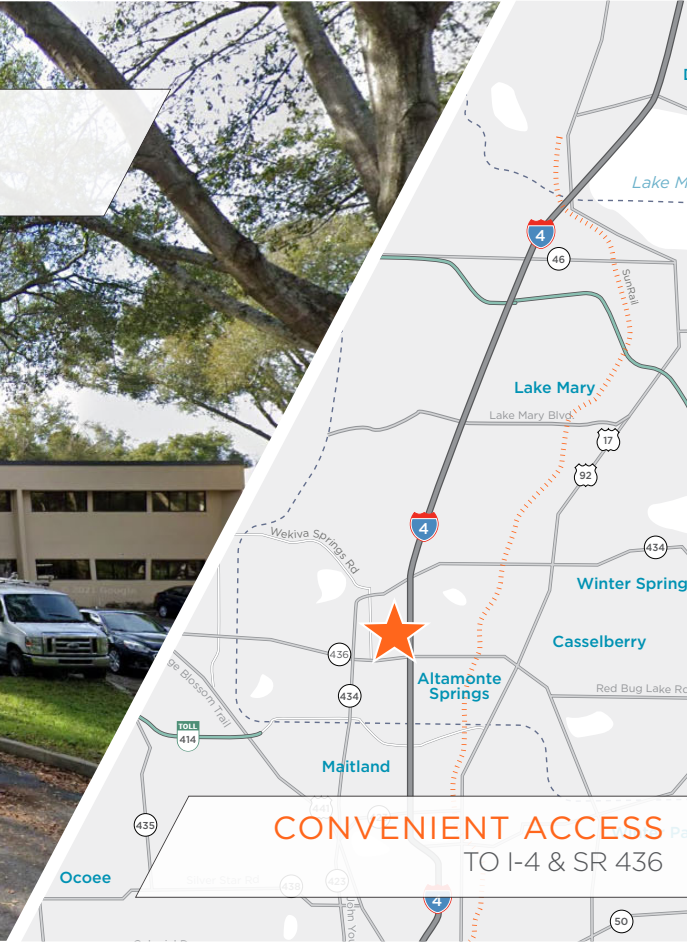


180 N WESTMONTE DR
ALTAMONTE SPRINGS, FL 32714



FRONTAGE SIGN AVAILABLE



CONVENIENT ACCESS
TO I-4 & SR 436

3,744 - 7,932 SF AVAILABLE
180 N WESTMONTE DR

BUILDING HIGHLIGHTS

ASKING RATE
\$14.00/SF MG

MONTHLY RATE*
\$9,485.35

SUBLEASE EXPIRATION
APRIL 1, 2026

TOTAL BUILDING SF
7,932 SF

PARKING RATIO
3.34/1,000

CEILING HEIGHT
12'

FLOORS
2

YEAR BUILT
1984

AVAILABILITY
IMMEDIATELY

CONSTRUCTION
MASONRY

ZONING
GO

**Sales Tax Included*

CONTACT INFORMATION

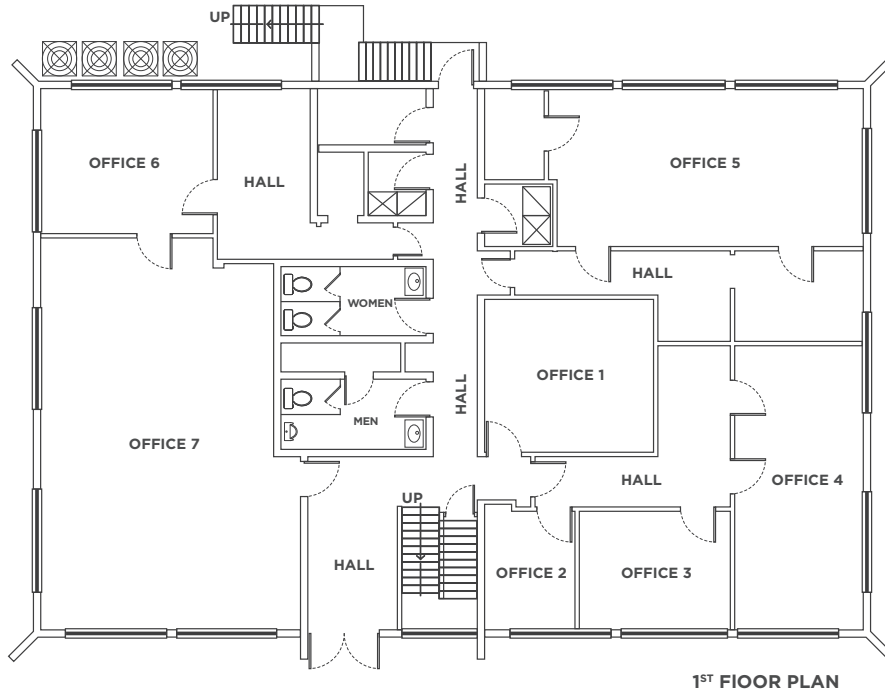
RYAN HUBBARD
Director
+1 407 541 4390
ryan.hubbard@cushwake.com

TAYLOR ZAMBITO
Senior Director
+1 407 541 4409
taylor.zambito@cushwake.com

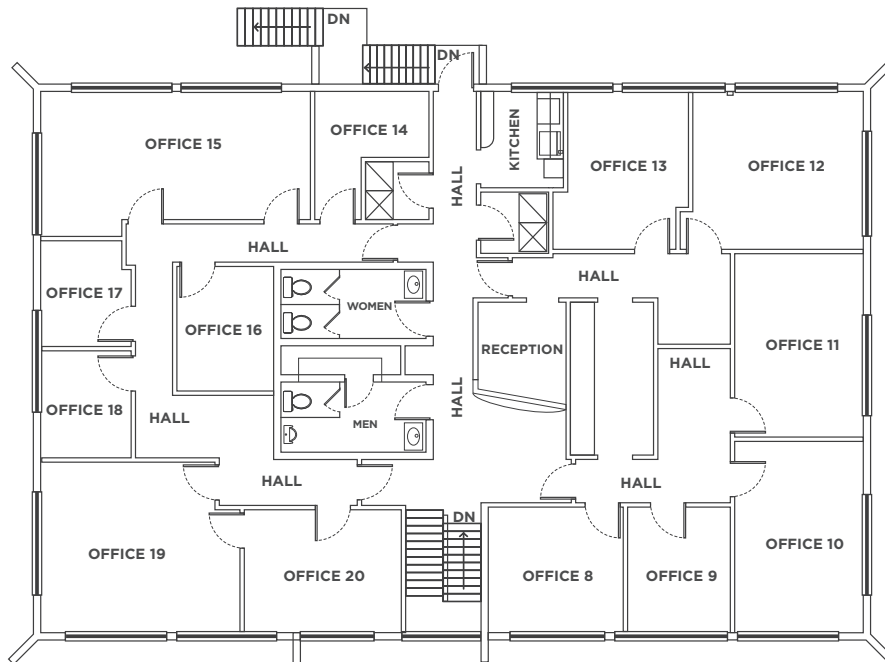


©2024 Cushman & Wakefield. All rights reserved. The information contained in this communication is strictly confidential. This information has been obtained from sources believed to be reliable but has not been verified. NO WARRANTY OR REPRESENTATION, EXPRESS OR IMPLIED, IS MADE AS TO THE CONDITION OF THE PROPERTY (OR PROPERTIES) REFERENCED HEREIN OR AS TO THE ACCURACY OR COMPLETENESS OF THE INFORMATION CONTAINED HEREIN, AND SAME IS SUBMITTED SUBJECT TO ERRORS, OMISSIONS, CHANGE OF PRICE, RENTAL OR OTHER CONDITIONS, WITHDRAWAL WITHOUT NOTICE, AND TO ANY SPECIAL LISTING CONDITIONS IMPOSED BY THE PROPERTY OWNER(S). ANY PROJECTIONS, OPINIONS OR ESTIMATES ARE SUBJECT TO UNCERTAINTY AND DO NOT SIGNIFY CURRENT OR FUTURE PROPERTY PERFORMANCE.

180 N WESTMONTE DR FLOOR PLAN



1ST FLOOR PLAN



2ND FLOOR PLAN

CONTACT INFORMATION

RYAN HUBBARD
Director
+1 407 541 4390
ryan.hubbard@cushwake.com

TAYLOR ZAMBITO
Senior Director
+1 407 541 4409
taylor.zambito@cushwake.com

