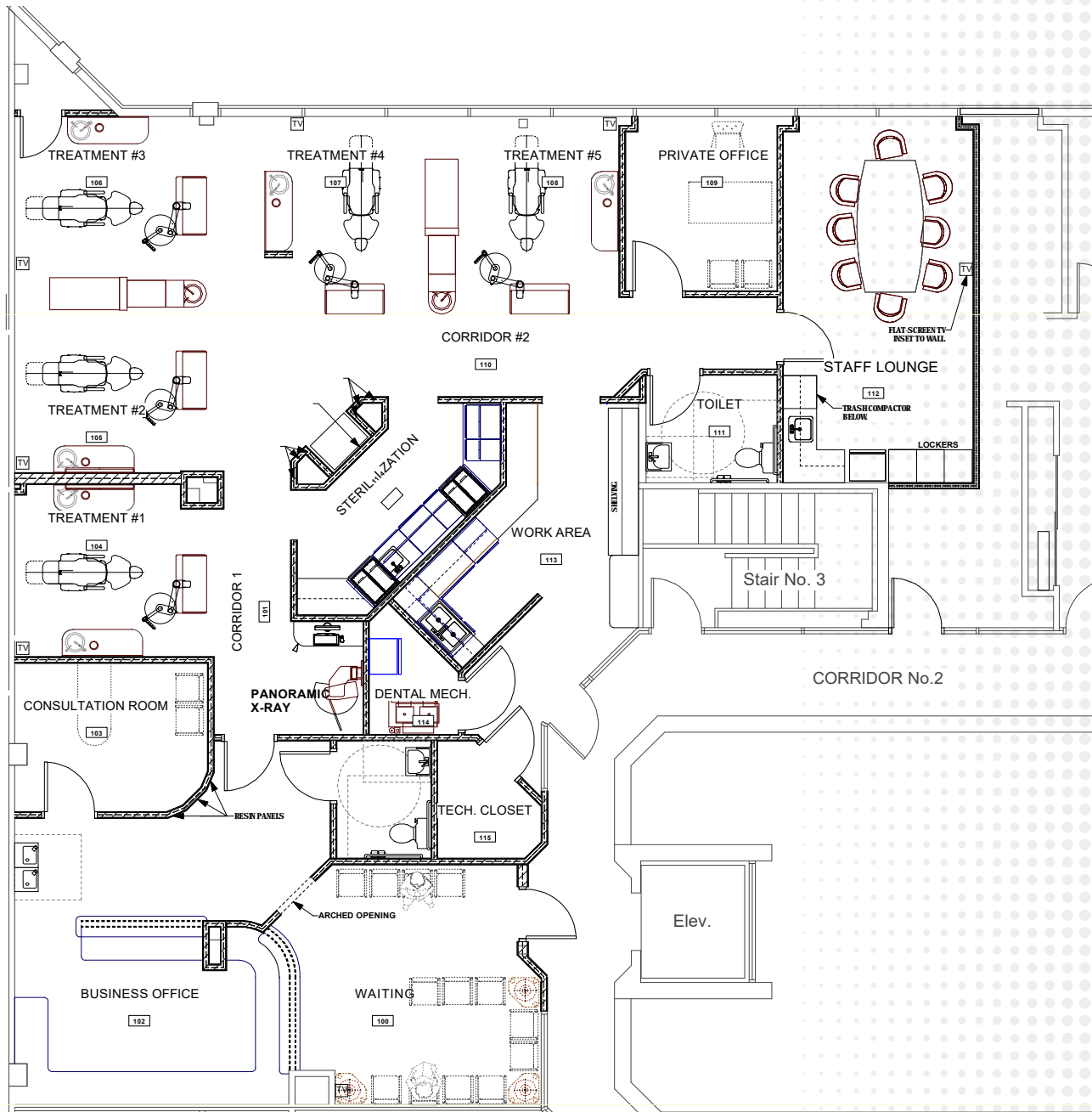


# DANIEL MEDICAL

## OFFICE BUILDING

2100 ALOMA AVENUE  
WINTER PARK, FL 32792

Suite 200 | 2,969 SF



Building owned and managed by  
**HEALTHCARE REALTY**

**ROBERT KELLOGG, CCIM**  
Senior Director  
407 541 4416  
robert.kellogg@cushwake.com

**TODD DAVIS, SIOR, CCIM**  
Senior Director  
407 541 4412  
todd.a.davis@cushwake.com