

FOR LEASE
26,000 SF



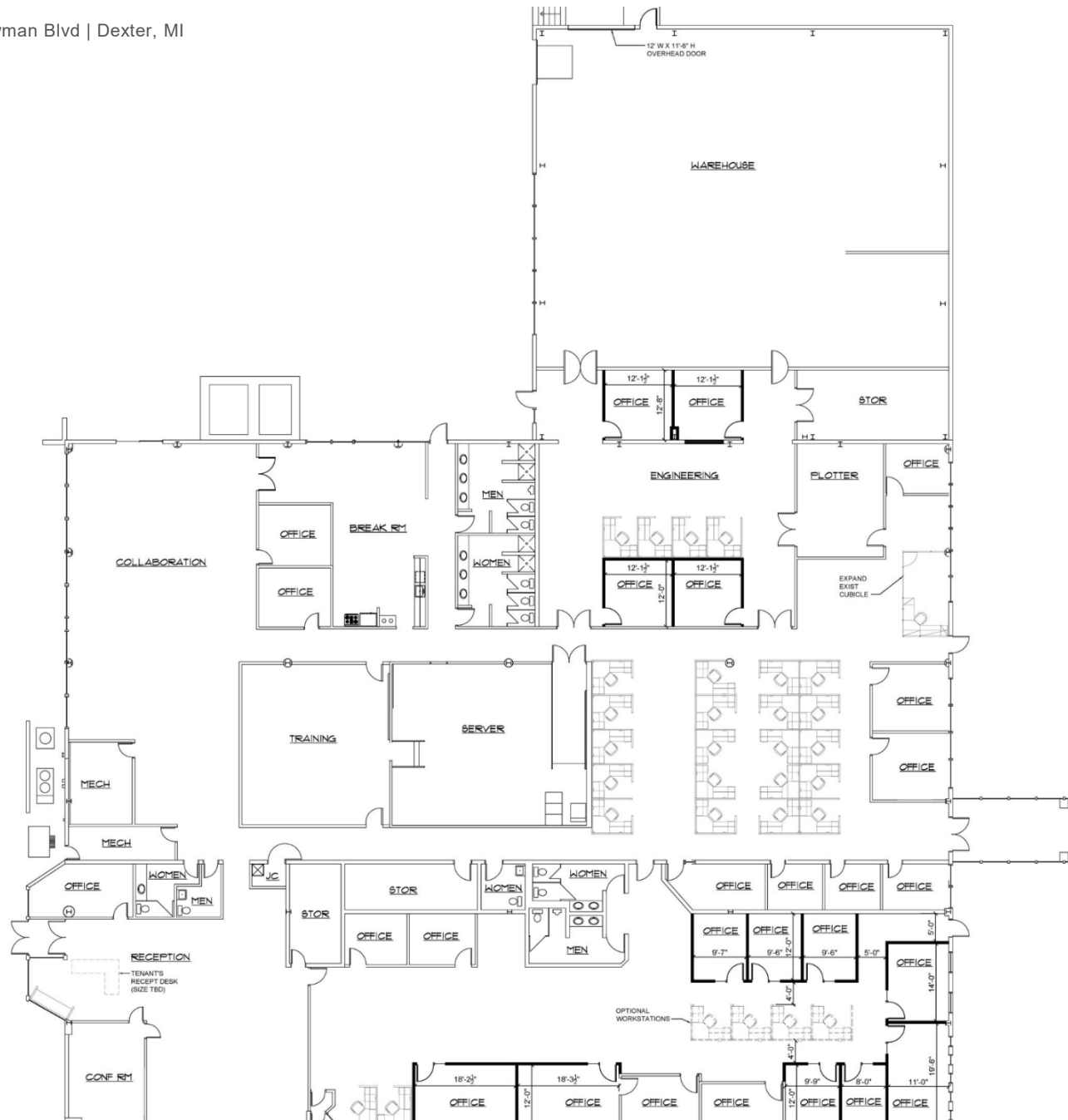
7322 NEWMAN BLVD
DEXTER, MICHIGAN

PROPERTY HIGHLIGHTS

- 21,136 SF office / 4,864 SF warehouse (expandable)
- 1 overhead door (12' x 11'.6"); 1 dock
- Back up generators on-site
- Flexible limited industrial zoning
- Parking 3/1,000 SF
- Easy access to I-94 and minutes from Ann Arbor
- Contact broker for pricing

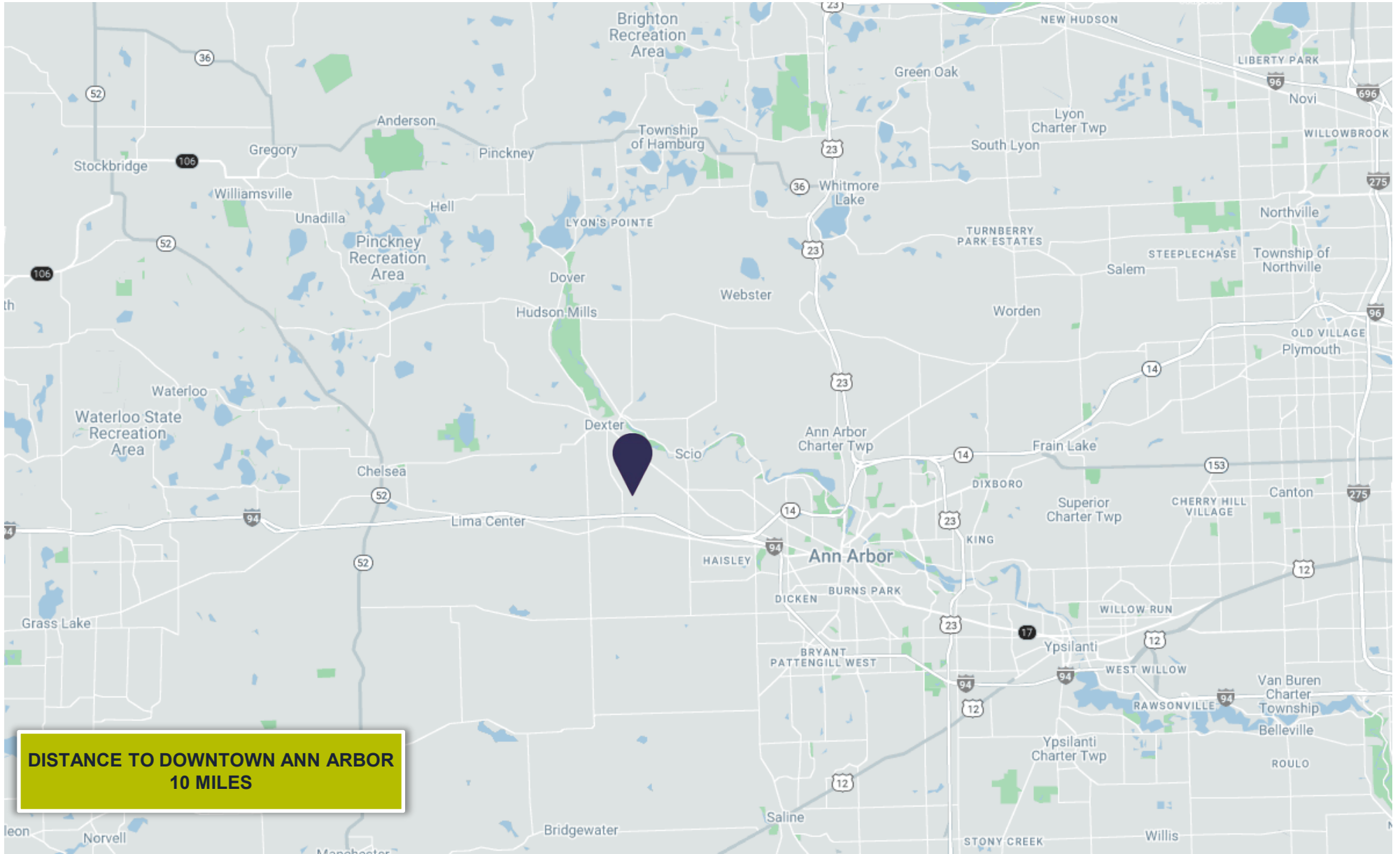


Total Building Area	26,000 SF
Office Area	21,136 SF
Industrial Area	4,864 SF
Primary Use	Flex/ Industrial
Property Class	B
Year Built/ Renovated	1985 (ren 1992/1993)
Stories	1
Roof	Metal
Total Acreage	20 AC
Zoning	L-1 Light Industrial
Trailer Parking	Yes
Outside Storage	No
Ceiling Clearance	12'6" to deck (10' to truss)
Bay Size/ Colum Spacing	Clearspan
Docks/Wells	1
Grade Doors	One (10'x10')
Industrial Area HVAC	Heat & AC
Industrial Area Lighting	Florescent
Electric	1600amp/3p
Lunchroom / Breakroom	Yes
Divisible to	N/A
Floor Drains	None
Fire Suppression	None
Cranes	None
Rail Served	No
Building Expandable	No



FLOOR PLAN

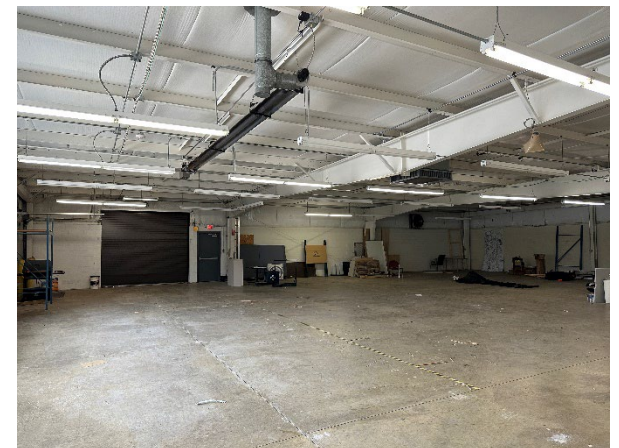
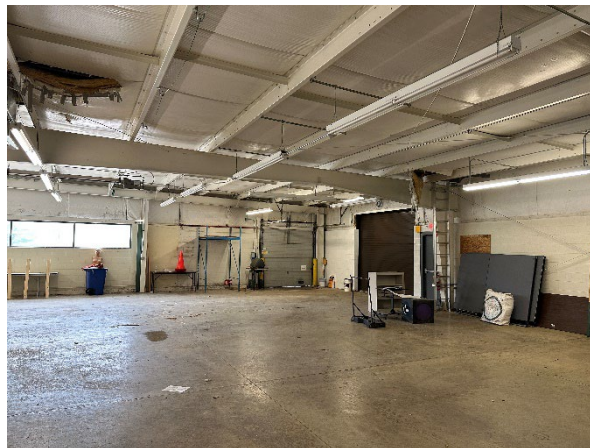
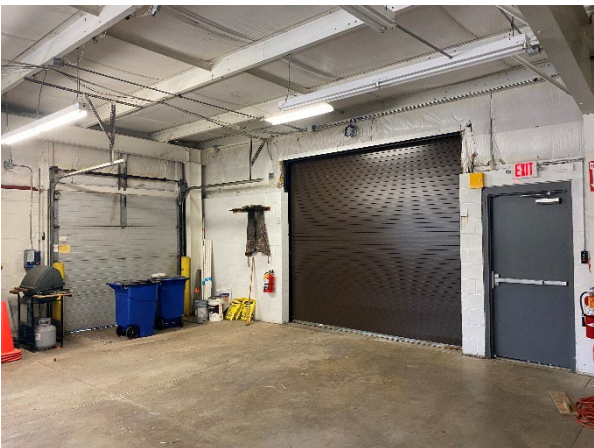
26,000 SF



LOCAL MAP

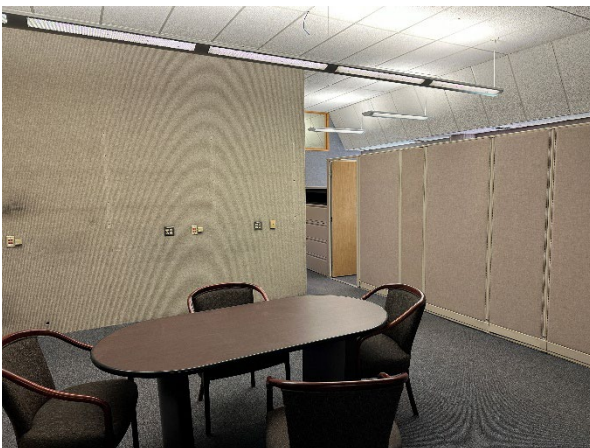
PROPERTY PHOTOS

7322 Newman Blvd | Dexter, MI



PROPERTY PHOTOS

7322 Newman Blvd | Dexter, MI



CONTACT INFORMATION

KYLE PASSAGE

Senior Associate

+1 248 358 6113

kyle.passage@cushwake.com

STEVE KOZAK

Director

+1 248 358 6107

steve.kozak@cushwake.com



© 2023 Cushman & Wakefield. All rights reserved. The information contained in this communication is strictly confidential. This information has been obtained from sources believed to be reliable but has not been verified. NO WARRANTY OR REPRESENTATION, EXPRESS OR IMPLIED, IS MADE AS TO THE CONDITION OF THE PROPERTY (OR PROPERTIES) REFERENCED HEREIN OR AS TO THE ACCURACY OR COMPLETENESS OF THE INFORMATION CONTAINED HEREIN, AND SAME IS SUBMITTED SUBJECT TO ERRORS, OMISSIONS, CHANGE OF PRICE, RENTAL OR OTHER CONDITIONS, WITHDRAWAL WITHOUT NOTICE, AND TO ANY SPECIAL LISTING CONDITIONS IMPOSED BY THE PROPERTY OWNER(S). ANY PROJECTIONS, OPINIONS OR ESTIMATES ARE SUBJECT TO UNCERTAINTY AND DO NOT SIGNIFY CURRENT OR FUTURE PROPERTY PERFORMANCE.