

**6555 E. FOREST AVE
DETROIT, MI 48207**

47,000 SF AVAILABLE

FOOD GRADE INDUSTRIAL BUILDING

**FOR SALE: \$3,600,000
LEASE POSSIBLE**

PROPERTY HIGHLIGHTS

- 47,000 SF with commercial kitchen, two freezers, and one cooler
- Heavy Power: 2000a/480v
- Two (2) Interior wells, three (3) overhead doors
- Parking garage
- 14'-16' ceiling height

For more information, contact:

Conner Salsberry
Senior Associate
+1 248 358 6114
conner.salsberry@cushwake.com

27777 Franklin Rd. Suite 1050
Southfield, MI 48034
P: +1 248 358 6100
cushmanwakefield.com

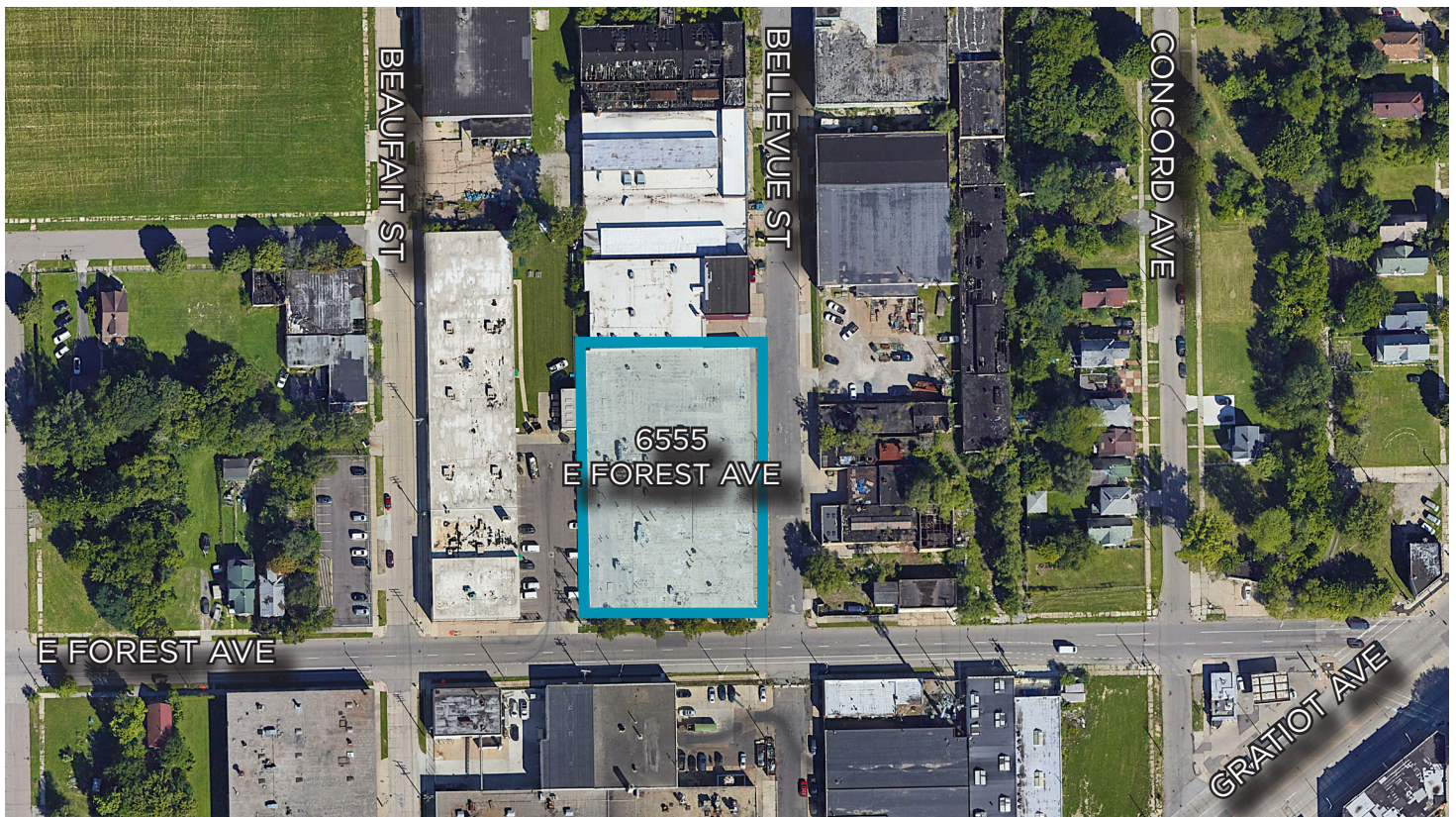
FOR SALE

6555 E. FOREST AVE

DETROIT

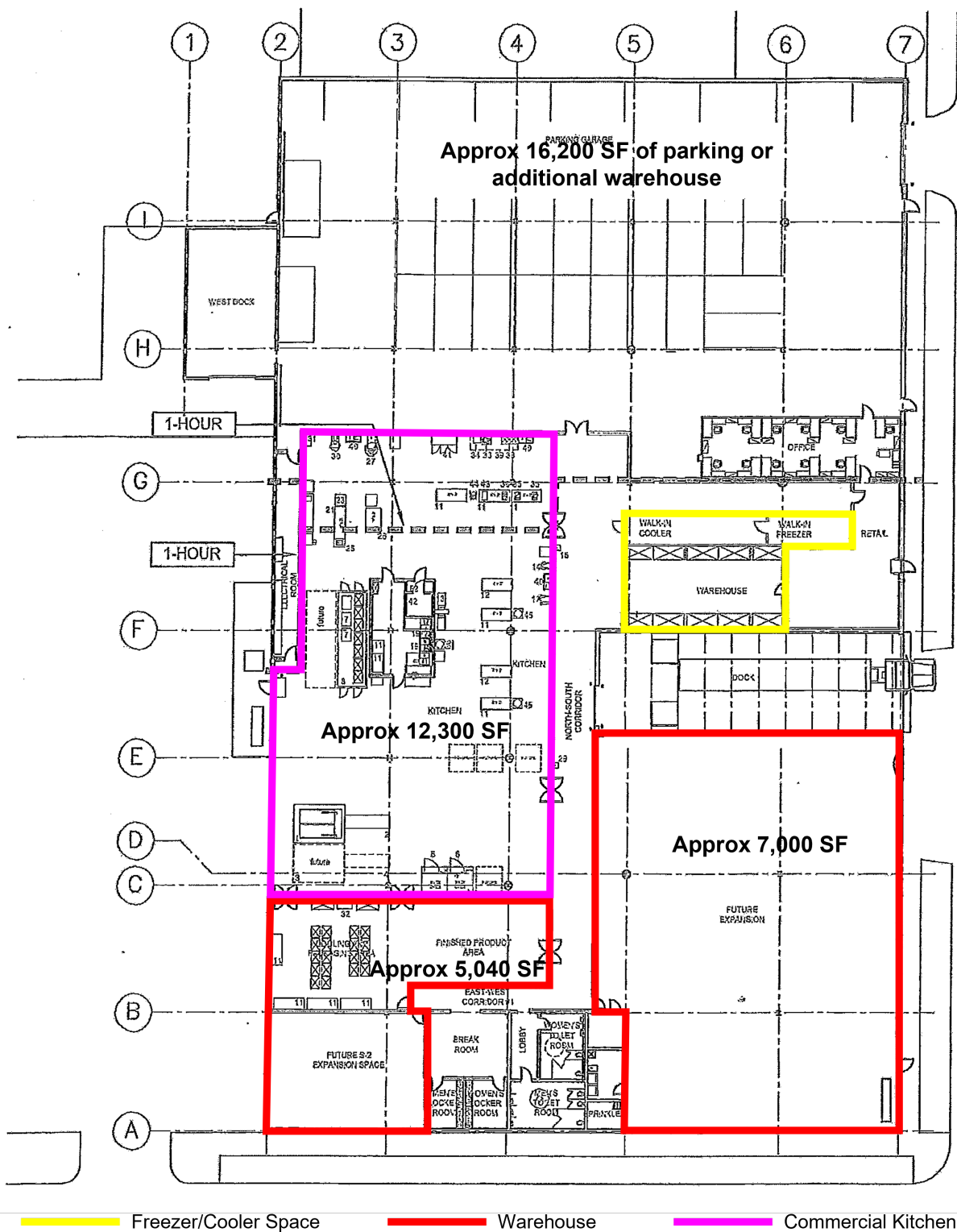
BUILDING SPECIFICATIONS

COUNTY	Wayne	DOCK DOORS	Two (2) Interior Wells
AVAILABLE SIZE	47,000 SF	DOCK EQUIPMENT	Levelers
WAREHOUSE SIZE	12,040 SF (Additional 16,00 SF available)	DRIVE-IN DOORS	Three (3)
TENANCY	Single	SPRINKLERS	Yes (Ordinary Hazard)
ACRES	1.10 AC	POWER	2000amps/480v
YEAR BUILT/ RENOVATED	1963/ 2001	FLOOR	6" with Floor Drains
CONSTRUCTION	Masonry	LIGHTING	LED
CEILING HEIGHT	14'-16'	ZONING	M-4
PARKING	40 Spaces - Interior Parking Garage	HVAC	Partial A/C
ROOF	Membrane	APN#	23-002012-453
COLUMN SPACE	Varied	ROOM FOR EXPANSION	Yes



FOR SALE
6555 E. FOREST AVE
DETROIT

FLOOR PLAN



FOR SALE

6555 E. FOREST AVE DETROIT

AERIAL LOCATION



For more information, contact:

Conner Salsberry

Senior Associate

+1 248 358 6114

conner.salsberry@cushwake.com

27777 Franklin Rd, Suite 1050

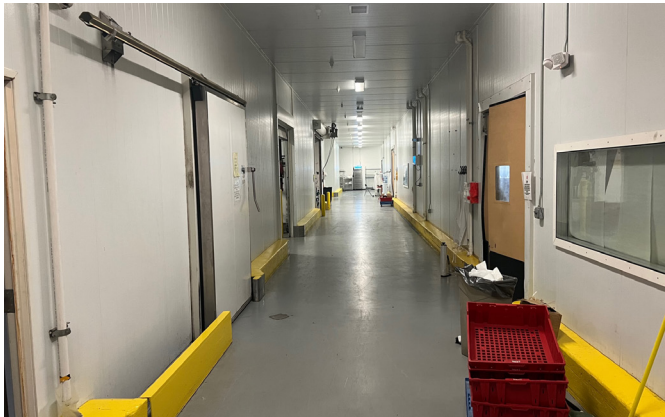
Southfield, MI 48034

P: +1 248 358 6100

cushmanwakefield.com

FOR SALE
6555 E. FOREST AVE
DETROIT

PHOTOS



For more information, contact:

Conner Salsberry
Senior Associate
+1 248 358 6114
conner.salsberry@cushwake.com

27777 Franklin Rd, Suite 1050
Southfield, MI 48034
P: +1 248 358 6100
cushmanwakefield.com

FOR SALE
6555 E. FOREST AVE
DETROIT

PHOTOS



For more information, contact:

Conner Salsberry
Senior Associate
+1 248 358 6114
conner.salsberry@cushwake.com

27777 Franklin Rd, Suite 1050
Southfield, MI 48034
P: +1 248 358 6100
cushmanwakefield.com