

# 6054 GATEWAY DRIVE

## WHITESTOWN, IN



## PROPERTY HIGHLIGHTS

- **Prime Location:** Situated in a growing area of Whitestown, IN, with excellent visibility & accessibility
- **Modern Design:** Newly constructed with contemporary architectural features & high-quality finishes
- **Convenient Parking:** Abundant on-site parking with designated spaces for patients & staff
- **High-Traffic Area:** Located in a high-traffic zone, offering increases exposure and potential patient footfall
- **Flexible Floor Plans:** Customizable interior layouts to suit specific medical practice needs

### MATT BOYD

Senior Associate  
+1 317 985 2693  
matt.boyd@cushwake.com

### DARRIN BOYD, SIOR, CCIM

Managing Director  
+1 317 590 8490  
darrin.boyd@cushwake.com

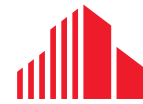
One American Square, Suite 1800  
Indianapolis, IN 46282  
+1 317 634 6363

[cushmanwakefield.com](http://cushmanwakefield.com)

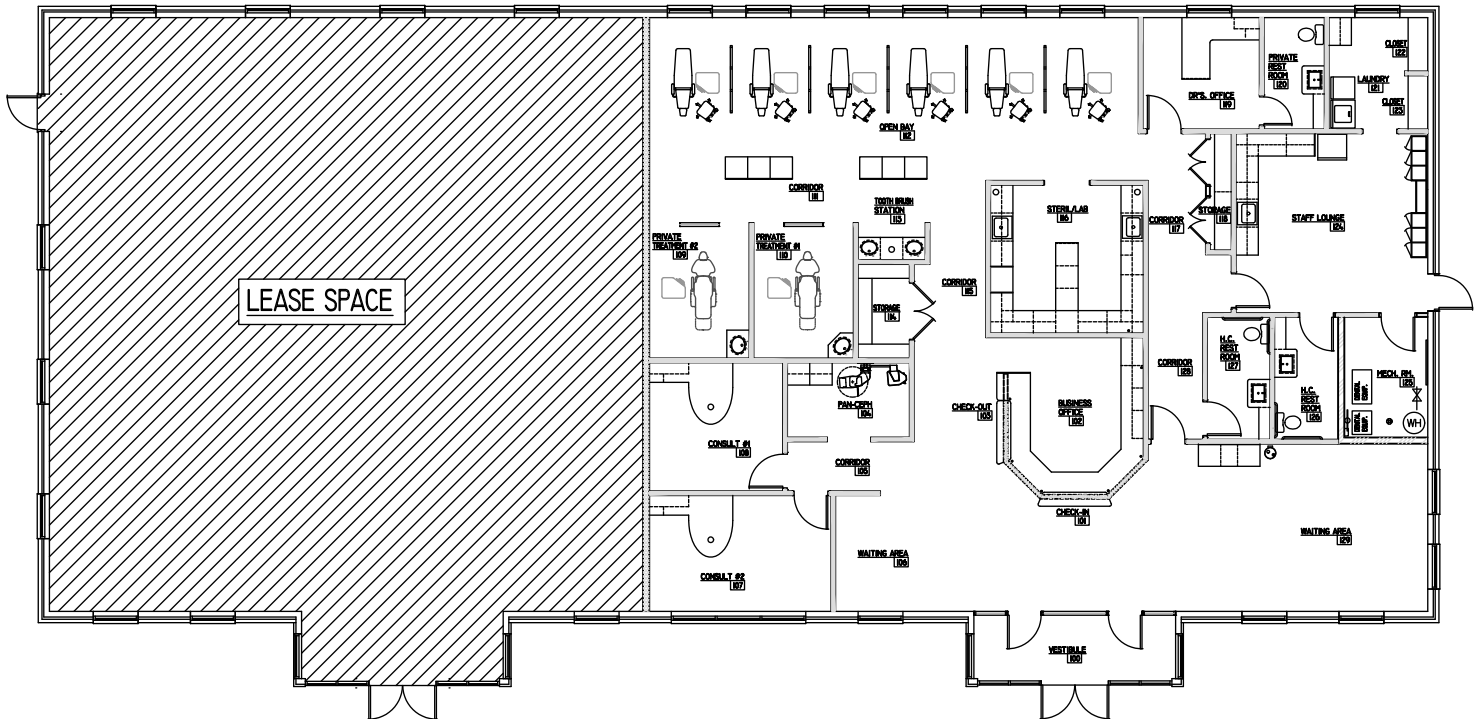
©2024 Cushman & Wakefield. All rights reserved. The information contained in this communication is strictly confidential. This information has been obtained from sources believed to be reliable but has not been verified. NO WARRANTY OR REPRESENTATION, EXPRESS OR IMPLIED, IS MADE AS TO THE CONDITION OF THE PROPERTY (OR PROPERTIES) REFERENCED HEREIN OR AS TO THE ACCURACY OR COMPLETENESS OF THE INFORMATION CONTAINED HEREIN, AND SAME IS SUBMITTED SUBJECT TO ERRORS, OMISSIONS, CHANGE OF PRICE, RENTAL OR OTHER CONDITIONS, WITHDRAWAL WITHOUT NOTICE, AND TO ANY SPECIAL LISTING CONDITIONS IMPOSED BY THE PROPERTY OWNER(S). ANY PROJECTIONS, OPINIONS OR ESTIMATES ARE SUBJECT TO UNCERTAINTY AND DO NOT SIGNIFY CURRENT OR FUTURE PROPERTY PERFORMANCE.

# 6054 GATEWAY DRIVE

WHITESTOWN, IN



CUSHMAN &  
WAKEFIELD



SUITE 101  
AVAILABLE  
3,066 SF

## MATT BOYD

Senior Associate  
+1 317 985 2693  
matt.boyd@cushwake.com

## DARRIN BOYD, SIOR, CCIM

Managing Director  
+1 317 590 8490  
darrin.boyd@cushwake.com

One American Square, Suite 1800  
Indianapolis, IN 46282  
+1 317 634 6363

[cushmanwakefield.com](http://cushmanwakefield.com)

©2024 Cushman & Wakefield. All rights reserved. The information contained in this communication is strictly confidential. This information has been obtained from sources believed to be reliable but has not been verified. NO WARRANTY OR REPRESENTATION, EXPRESS OR IMPLIED, IS MADE AS TO THE CONDITION OF THE PROPERTY (OR PROPERTIES) REFERENCED HEREIN OR AS TO THE ACCURACY OR COMPLETENESS OF THE INFORMATION CONTAINED HEREIN, AND SAME IS SUBMITTED SUBJECT TO ERRORS, OMISSIONS, CHANGE OF PRICE, RENTAL OR OTHER CONDITIONS, WITHDRAWAL WITHOUT NOTICE, AND TO ANY SPECIAL LISTING CONDITIONS IMPOSED BY THE PROPERTY OWNER(S). ANY PROJECTIONS, OPINIONS OR ESTIMATES ARE SUBJECT TO UNCERTAINTY AND DO NOT SIGNIFY CURRENT OR FUTURE PROPERTY PERFORMANCE.