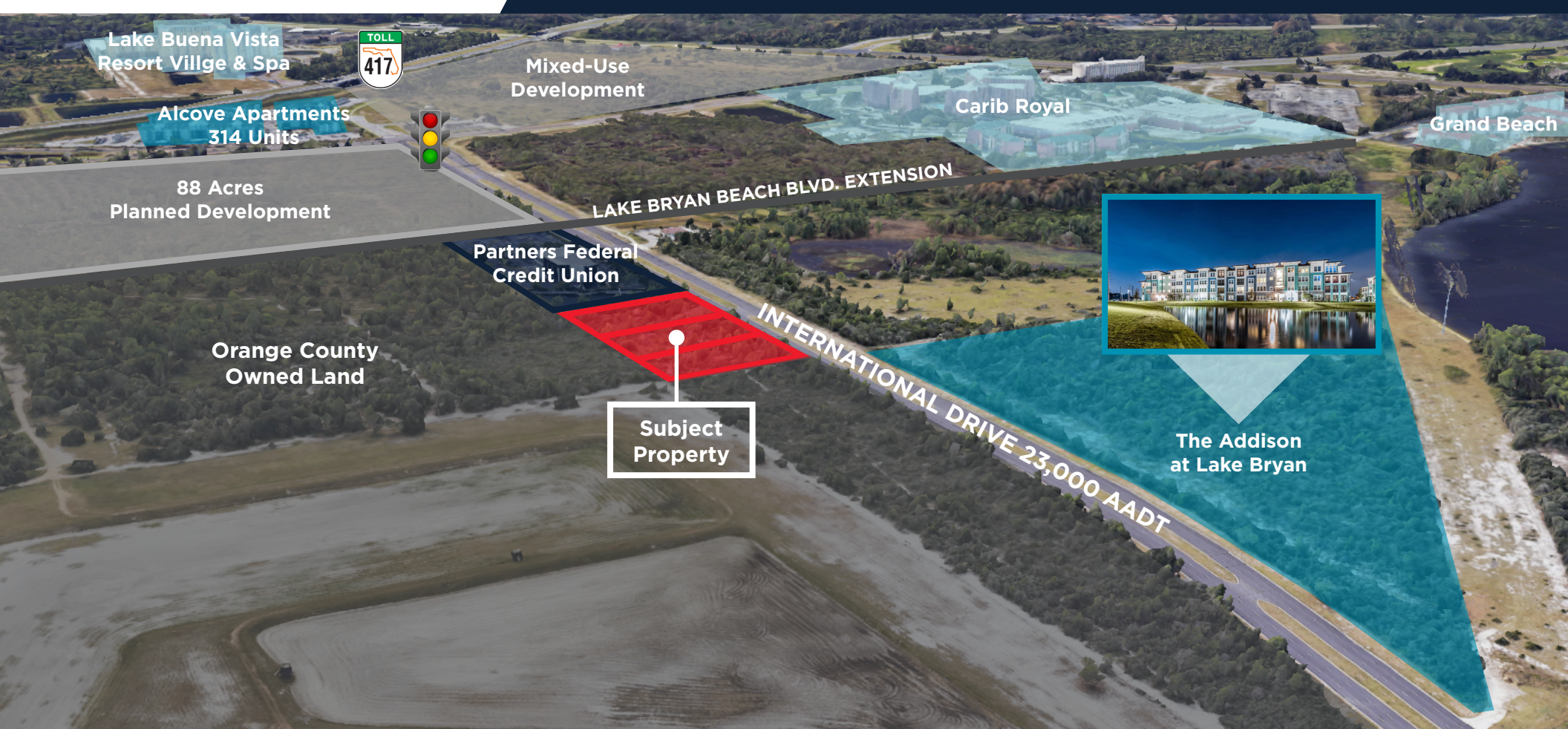


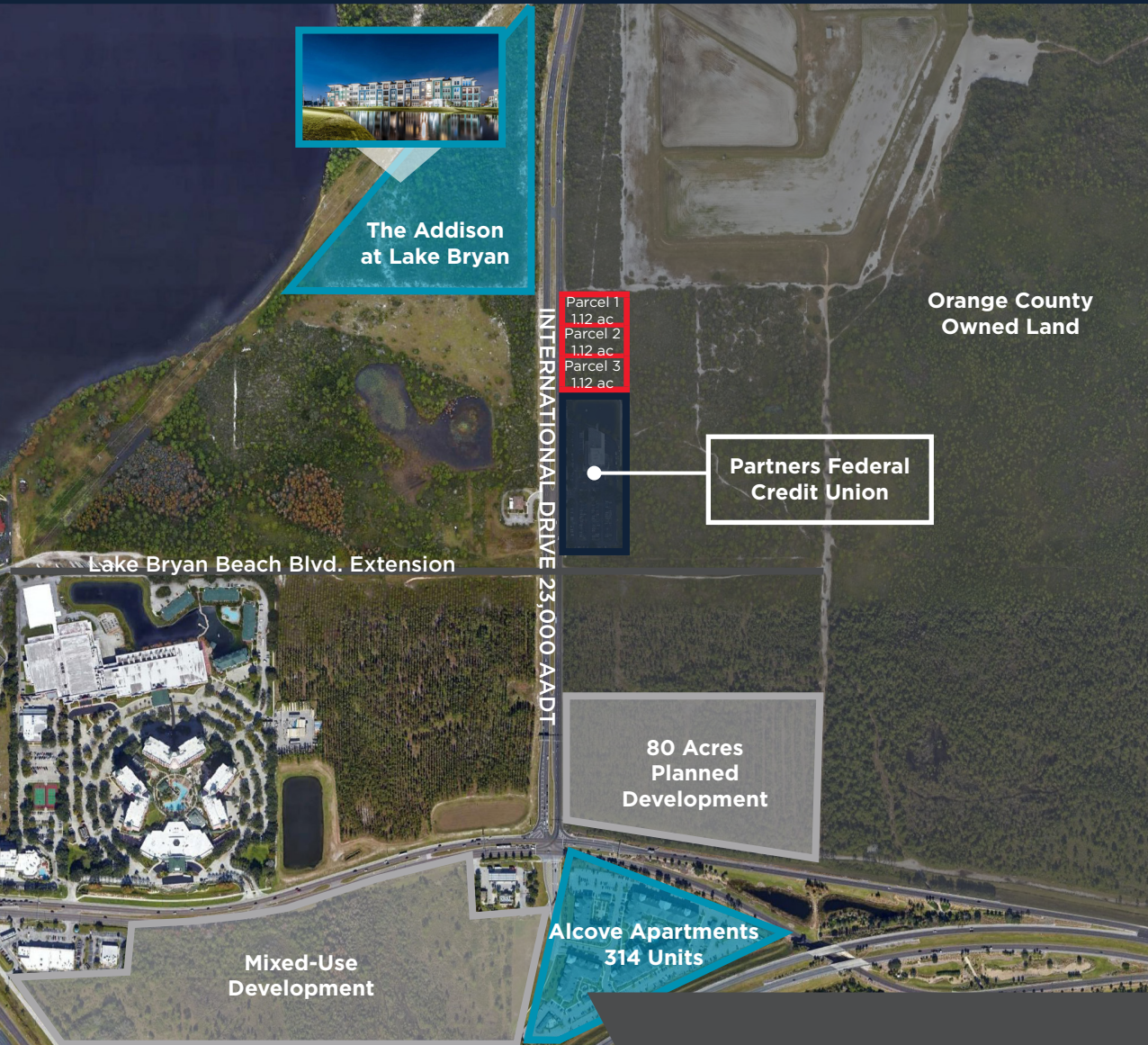
Raw Land Ready for Development

THREE 1.12 PARCELS FOR SALE - 3.35 TOTAL ACRES

INTERNATIONAL DRIVE, ORLANDO, FL



EXCLUSIVELY LISTED BY CUSHMAN & WAKEFIELD



Property Description

- 3.35 acres
- Three 1.12 acre parcels available
- Undeveloped raw land ready for development
- Full Access International Drive
- Zoning - PD

Investment Highlights

- Frontage to International Drive
- 23,000 Cars daily
- Close proximity to Orlando's tourism submarket
- 10 minute drive from Orlando's premier amusement parks



Population

2 MILES	5 MILES
23,742	144,116



Avg. HH Income

2 MILES	5 MILES
\$75,490	\$91,157



Daytime Employment

2 MILES	5 MILES
33,349	105,699

Area Highlights

NEARBY RETAIL & ATTRACTIONS



RETAIL			
1	Starbucks	10	Publix
2	Walgreens	11	Outback Steakhouse
3	Golden Corral	12	McDonald's
4	Bahama Breeze	13	Five Below
5	BJ's Restaurant	14	Aldi
6	Pollo Tropical	15	Ross
7	Carrabba's Italian Grill	16	Burlington Coat Factory
8	Tropical Smoothie Cafe	17	Panda Express
9	Starbucks	18	Chipotle
ENTERTAINMENT			
1	Orlando Premium Outlets	2	Disney Springs
HOTELS			
1	Caribe Royale Orlando	5	Holiday Inn Resort
2	Orlando World Center Marriott	6	Springhill Suites
3	Marriott's Royal Palms	7	Courtyard by Marriott Orlando
4	Sheraton Vistana Resort	8	Hyatt Regency
MULTIFAMILY			
1	Patterson Court Apartments	3	Alcove Apartments
2	The Addison at Lake Bryan		

ALEC MCNAMARA

Director
+1 407 541 4385
alec.mcnamara@cushwake.com

REED FETTER

Associate
+1 407 241 3084
reed.fetter@cushwake.com

JEFF SWEENEY

Managing Director
+1 407 541 4429
jeff.sweeney@cushwake.com

CUSHMAN & WAKEFIELD

+1 407 841 8000
20 N. Orange Ave, Suite 300
Orlando, FL 32801

©November 13, 2023 10:50 AM Cushman & Wakefield. All rights reserved. The information contained in this communication is strictly confidential. This information has been obtained from sources believed to be reliable but has not been verified. No warranty or representation, express or implied, is made as to the condition of the property (or properties) referenced herein or as to the accuracy or completeness of the information contained herein, and same is submitted subject to errors, omissions, change of price, rental or other conditions, withdrawal without notice, and to any special listing conditions imposed by the property owner(s). Any projections, opinions or estimates are subject to uncertainty and do not signify current or future property performance.