



AVAILABLE FOR SUBLEASE

1700

MARKET STREET

Philadelphia, PA 19103

10th Floor | 19,839 RSF

For more information, please contact:

William J. Hirschfeld, CCIM
Senior Director
215.963.4025
bill.hirschfeld@cushwake.com

ONE Liberty Place
1650 Market Street, 33rd Floor
Philadelphia, PA 19103
cushmanwakefield.com



1700

MARKET STREET

Philadelphia, PA 19103

10th Floor SUBLEASE

PROPERTY **BASICS:**

- 19,838 RSF - 10th Floor
- Available Immediately
- Furniture Available
- Open Plan Layout
- Lease Expiration of January 31, 2022
- Strong Sublandlord

*see floorplan below



For more information, please contact:

William J. Hirschfeld, CCIM
Senior Director
215.963.4025

bill.hirschfeld@cushwake.com



1700 MARKET STREET

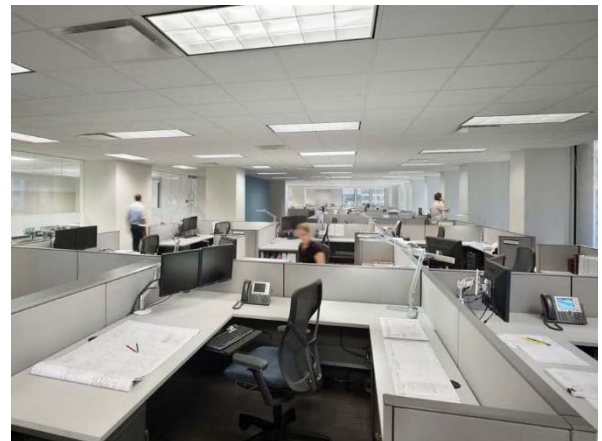
Philadelphia, PA 19103

10th Floor SUBLEASE



PROPERTY DETAILS:

- Elevator Lobby Exposure
- Beautiful Glass Entrance
- 77 Work Stations
- High Tech Finish
- Large Conference Room (can be divided in two)
- 12-seat Café



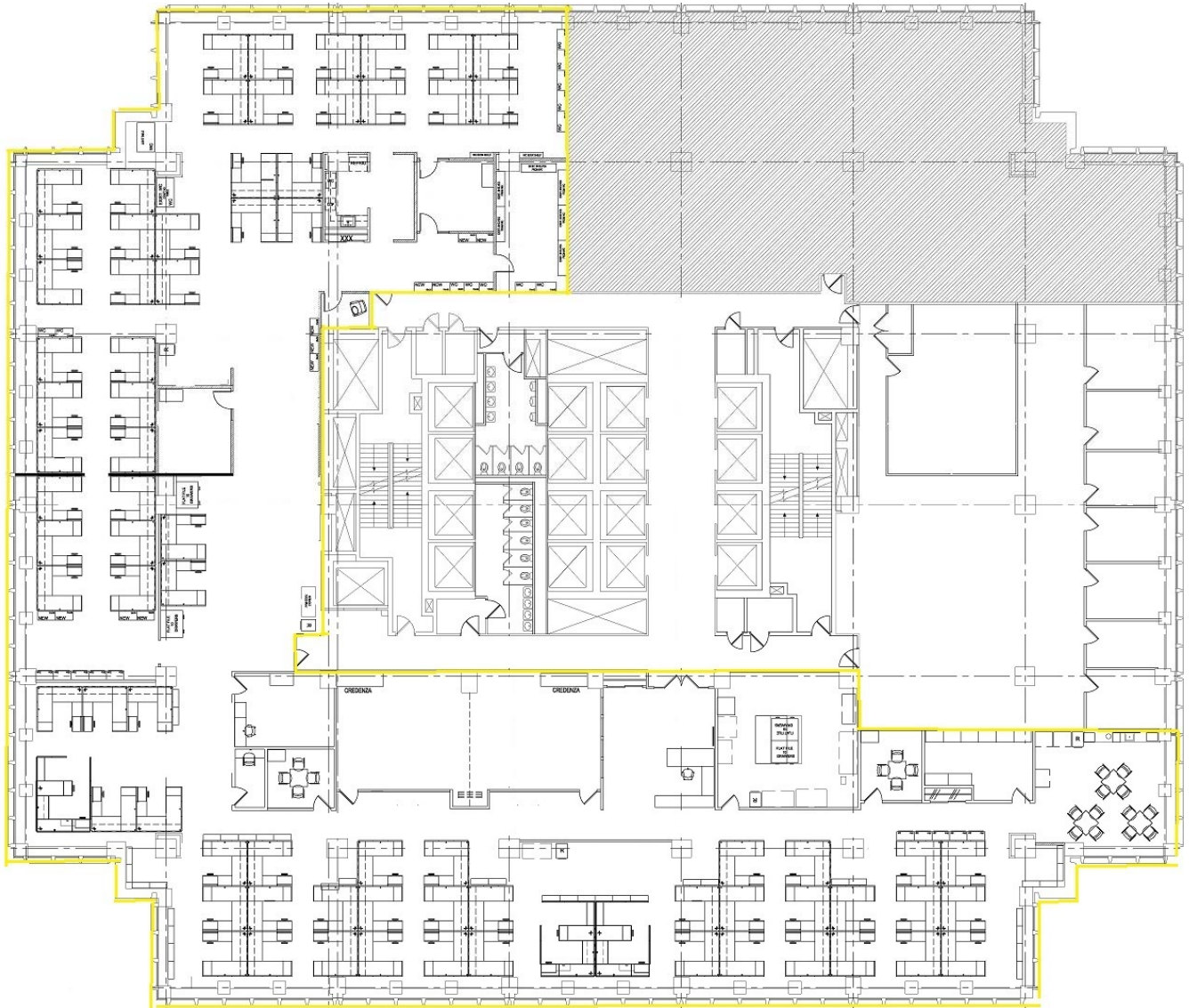
For more information, please contact:

William J. Hirschfeld, CCIM
Senior Director
215.963.4025

bill.hirschfeld@cushwake.com



10th FLOORPLAN



Cushman & Wakefield Copyright 2017. No warranty or representation, express or implied, is made to the accuracy or completeness of the information contained herein, and same is submitted subject to errors, omissions, change of price, rental or other conditions, withdrawal without notice, and to any special listing conditions imposed by the property owner(s). As applicable, we make no representation as to the condition of the property (or properties) in question.