



RARE, IN-CITY WAREHOUSE SPACE WITH GREAT LAKE UNION VIEWS

1255 WESTLAKE AVE N

27,155 RSF | AVAILABLE 6/1/22



 CUSHMAN & WAKEFIELD



FOR LEASE

1255 WESTLAKE AVE N

27,555 RSF

Property Highlights

- Available 6/1/2022 for 2–4 year lease term
- Rare, in-city warehouse space with great Lake Union views
- Creative brick & beam production/office space with brand new upgrades throughout
- 27,155 SF total (6,000 SF office)
- 15,000 SF of adjacent land for up to 40 parking stalls or additional yard space

\$20.00 — 22.00/SF NNN



Close to restaurants & retail



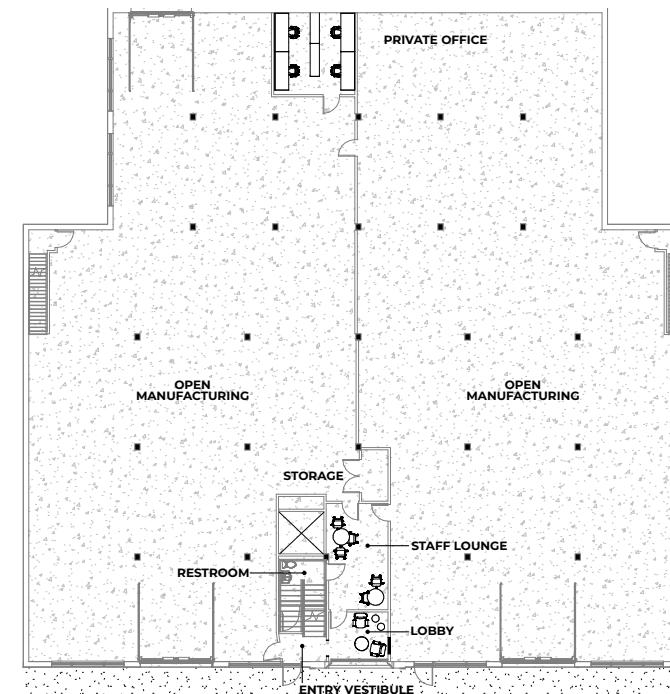
Steps from Lake Union



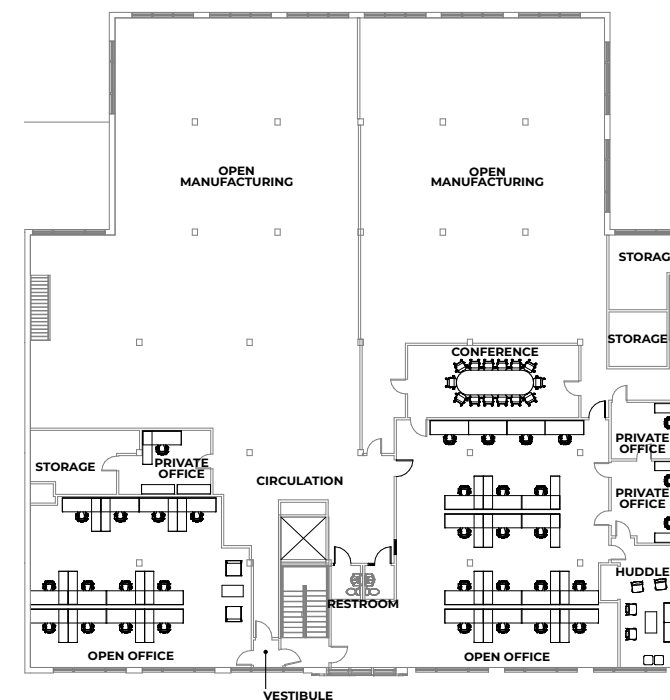
Part of dynamic, growing area

FLOOR PLANS

LEVEL 1



LEVEL 2



FOR LEASE

1255 WESTLAKE AVE N

27,155 RSF



©2022 Cushman & Wakefield. All rights reserved. The information contained in this communication is strictly confidential. This information has been obtained from sources believed to be reliable but has not been verified. NO WARRANTY OR REPRESENTATION, EXPRESS OR IMPLIED, IS MADE AS TO THE CONDITION OF THE PROPERTY (OR PROPERTIES) REFERENCED HEREIN OR AS TO THE ACCURACY OR COMPLETENESS OF THE INFORMATION CONTAINED HEREIN, AND SAME IS SUBMITTED SUBJECT TO ERRORS, OMISSIONS, CHANGE OF PRICE, RENTAL OR OTHER CONDITIONS, WITHDRAWAL WITHOUT NOTICE, AND TO ANY SPECIAL LISTING CONDITIONS IMPOSED BY THE PROPERTY OWNER(S). ANY PROJECTIONS, OPINIONS OR ESTIMATES ARE SUBJECT TO UNCERTAINTY AND DO NOT SIGNIFY CURRENT OR FUTURE PROPERTY PERFORMANCE.