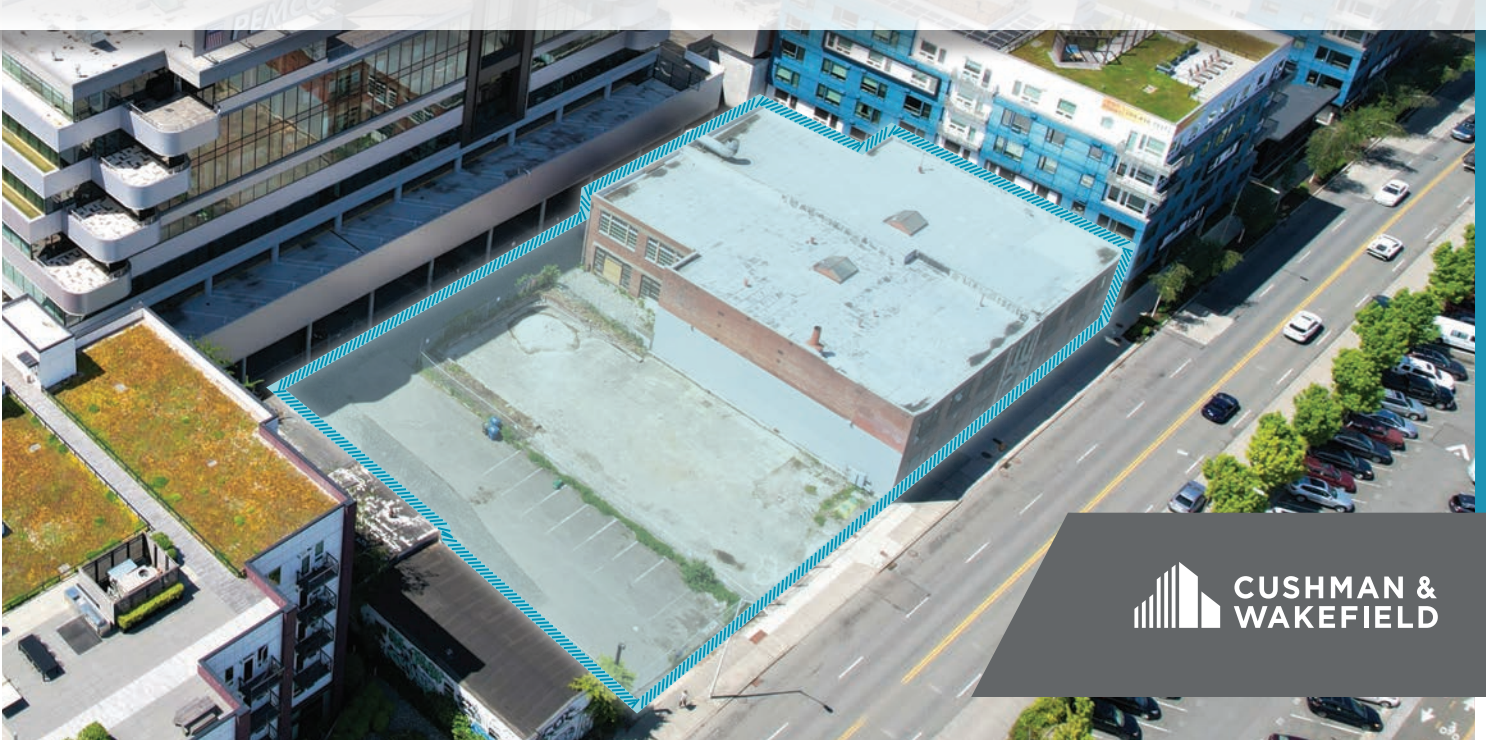




RARE, IN-CITY WAREHOUSE SPACE WITH PARKING/YARD

1255 WESTLAKE AVE N

27,155 RSF (DIVISIBLE) | AVAILABLE NOW



FOR LEASE

1255 WESTLAKE AVE N

27,155 RSF (DIVISIBLE)

Property Highlights

Available immediately

Rare, in-city warehouse and office with great Lake Union views

Creative brick & beam production/showroom/office space with brand new upgrades throughout

27,155 SF divisible to:

1st Floor	13,000 sf
2nd Floor	6,500 sf (Suite A)
	6,500 sf (Suite B)

15,000 SF of adjacent land for up to 40 parking stalls or additional yard space

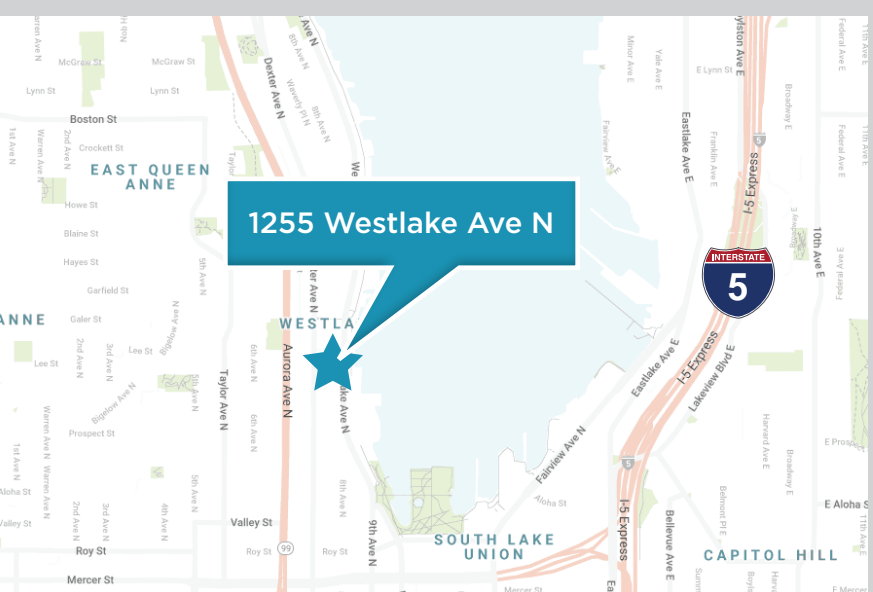
Up to 90 parking stalls available at Pemco HQ

RATES

1st Floor	\$1.75/SF NNN
2nd Floor	\$1.50/SF NNN
Yard Area	\$0.50/SF NNN
Parking	Contact brokers



WESTLAKE AVE N



GREG MILLERD

+1 206 799 1692

greg.millerd@cushwake.com

RYAN ALENIKOFF

+1 206 215 9787

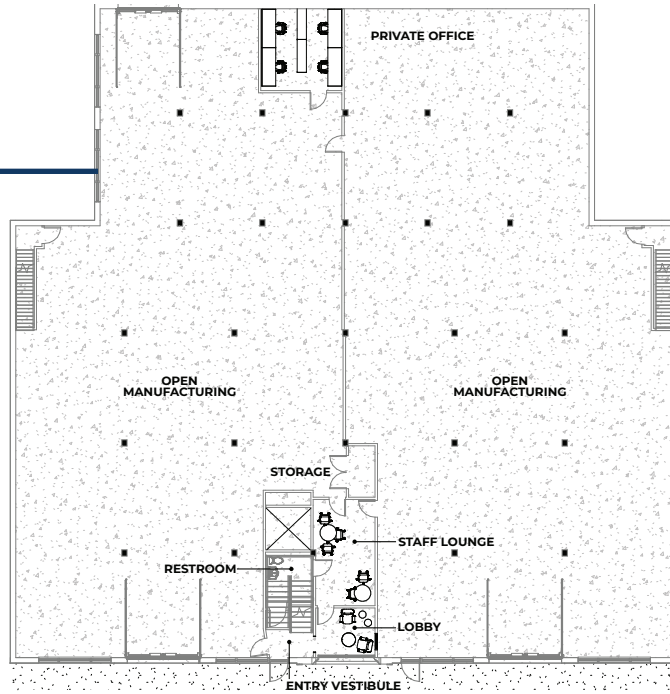
ryan.aleinikoff@cushwake.com

©2023 Cushman & Wakefield. All rights reserved. The information contained in this communication is strictly confidential. This information has been obtained from sources believed to be reliable but has not been verified. NO WARRANTY OR REPRESENTATION, EXPRESS OR IMPLIED, IS MADE AS TO THE CONDITION OF THE PROPERTY (OR PROPERTIES) REFERENCED HEREIN OR AS TO THE ACCURACY OR COMPLETENESS OF THE INFORMATION CONTAINED HEREIN, AND SAME IS SUBMITTED SUBJECT TO ERRORS, OMISSIONS, CHANGE OF PRICE, RENTAL OR OTHER CONDITIONS, WITHDRAWAL WITHOUT NOTICE, AND TO ANY SPECIAL LISTING CONDITIONS IMPOSED BY THE PROPERTY OWNER(S). ANY PROJECTIONS, OPINIONS OR ESTIMATES ARE SUBJECT TO UNCERTAINTY AND DO NOT SIGNIFY CURRENT OR FUTURE PROPERTY PERFORMANCE.

FLOOR PLANS

1ST FLOOR

Access to yard/parking



2ND FLOOR

