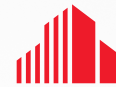


FOR LEASE

East Gilman Professional Building

295 NE Gilman Blvd, Issaquah, WA



CUSHMAN &
WAKEFIELD



SUITE 201 - 5,246 SF

Available August 1, 2024

\$30.00/SF, NNN

Property Highlights

- Easy access to I-90
- Minutes to Front Street & retail amenities
- Dense build-out with 20 private offices
- Excellent visibility
- 3.8 / 1,000 & street parking



10 MILES TO DOWNTOWN BELLEVUE

Contact

BRIAN TOY

Director

+1 425 201 1224

Brian.Toy@cushwake.com

FOR LEASE

East Gilman Professional Building

295 NE Gilman Blvd, Issaquah, WA



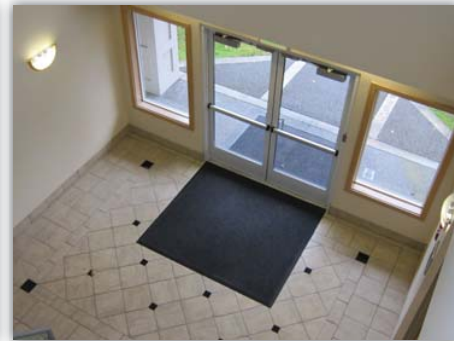
Contact

BRIAN TOY
Director
+1 425 201 1224
Brian.Toy@cushwake.com

FOR LEASE

East Gilman Professional Building

295 NE Gilman Blvd, Issaquah, WA



Contact

BRIAN TOY
Director
+1 425 201 1224
Brian.Toy@cushwake.com

©2024 Cushman & Wakefield. All rights reserved. The information contained in this communication is strictly confidential. This information has been obtained from sources believed to be reliable but has not been verified. NO WARRANTY OR REPRESENTATION, EXPRESS OR IMPLIED, IS MADE AS TO THE CONDITION OF THE PROPERTY (OR PROPERTIES) REFERENCED HEREIN OR AS TO THE ACCURACY OR COMPLETENESS OF THE INFORMATION CONTAINED HEREIN, AND SAME IS SUBMITTED SUBJECT TO ERRORS, OMISSIONS, CHANGE OF PRICE, RENTAL OR OTHER CONDITIONS, WITHDRAWAL WITHOUT NOTICE, AND TO ANY SPECIAL LISTING CONDITIONS IMPOSED BY THE PROPERTY OWNER(S). ANY PROJECTIONS, OPINIONS OR ESTIMATES ARE SUBJECT TO UNCERTAINTY AND DO NOT SIGNIFY CURRENT OR FUTURE PROPERTY PERFORMANCE.