

# MARSHALL BUILDING

2013 4<sup>TH</sup> AVE, SUITE 202  
SEATTLE, WA



**CUSHMAN &  
WAKEFIELD**

Will Carroll  
+1 206 521 0244  
[will.carroll@cushwake.com](mailto:will.carroll@cushwake.com)

Robyn Horn  
+1 206 521 0243  
[robyn.horn@cushwake.com](mailto:robyn.horn@cushwake.com)

4,451 SF AVAILABLE  
FOR SUBLEASE



4,451 SF  
AVAILABLE

7/31/27  
TERM END

FURNITURE  
INCLUDED

IMMEDIATE  
AVAILABILITY

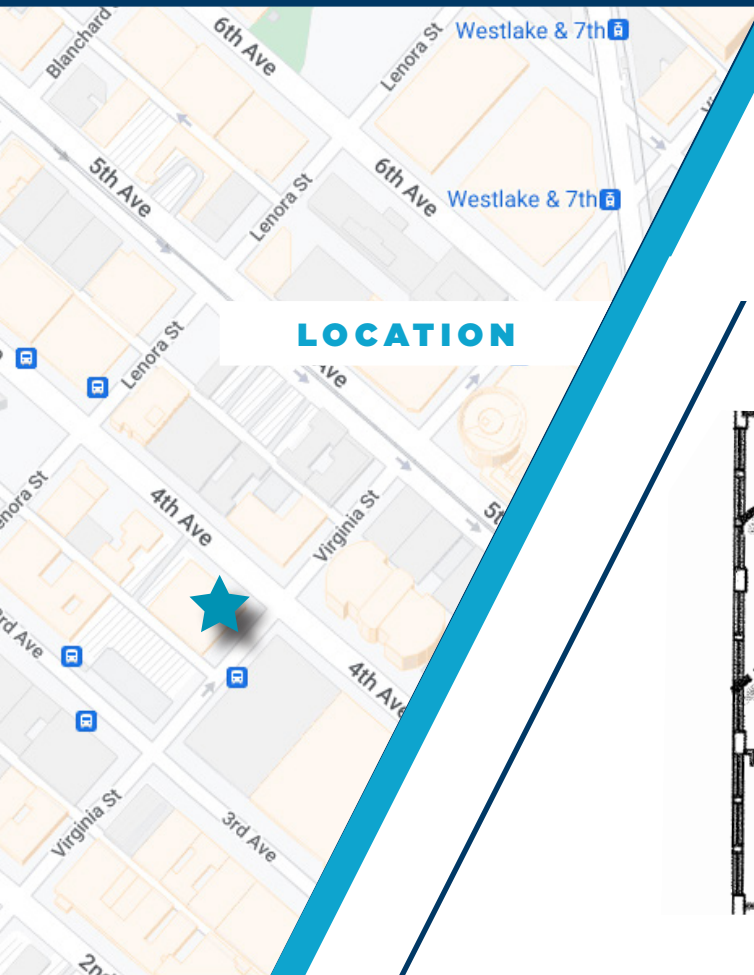


CALL FOR  
RATES



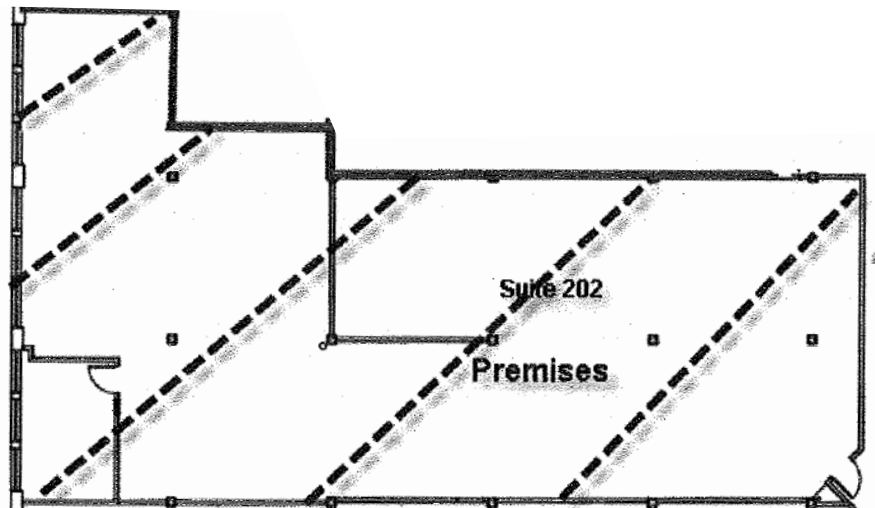
# ABOUT THE SPACE

- Open, spacious suite with exposed timber, large windows and elevator lobby exposure
- 1 private office/meeting room
- Large kitchen/break area
- Conference room in suite
- Server room & storage area
- Highly walkable Belltown location near transit, restaurants, coffee shops, and more



## LOCATION

## FLOORPLAN







**CUSHMAN &  
WAKEFIELD**



©2023 Cushman & Wakefield. All rights reserved. The information contained in this communication is strictly confidential. This information has been obtained from sources believed to be reliable but has not been verified. NO WARRANTY OR REPRESENTATION, EXPRESS OR IMPLIED, IS MADE AS TO THE CONDITION OF THE PROPERTY (OR PROPERTIES) REFERENCED HEREIN OR AS TO THE ACCURACY OR COMPLETENESS OF THE INFORMATION CONTAINED HEREIN, AND SAME IS SUBMITTED SUBJECT TO ERRORS, OMISSIONS, CHANGE OF PRICE, RENTAL OR OTHER CONDITIONS, WITHDRAWAL WITHOUT NOTICE, AND TO ANY SPECIAL LISTING CONDITIONS IMPOSED BY THE PROPERTY OWNER(S). ANY PROJECTIONS, OPINIONS OR ESTIMATES ARE SUBJECT TO UNCERTAINTY AND DO NOT SIGNIFY CURRENT OR FUTURE PROPERTY PERFORMANCE.

**Will Carroll**  
+1 206 521 0244  
[will.carroll@cushwake.com](mailto:will.carroll@cushwake.com)

**Robyn Horn**  
+1 206 521 0243  
[robyn.horn@cushwake.com](mailto:robyn.horn@cushwake.com)

**Cushman & Wakefield**  
601 Union Street, Suite 1100  
Seattle, WA 98101  
+1 206 682 0666  
[cushmanwakefield.com](http://cushmanwakefield.com)