

Office Space Available

1112 NW 52nd St.

17,452 SF Available

SPACE PROFILE

3rd Floor

Available Floors

17,452 SF

Total Available Space

Contact Broker

Rent Rate

2/28/2030

Sublease Expiration

30 Days

Availability

0.49/1,000 SF

Parking

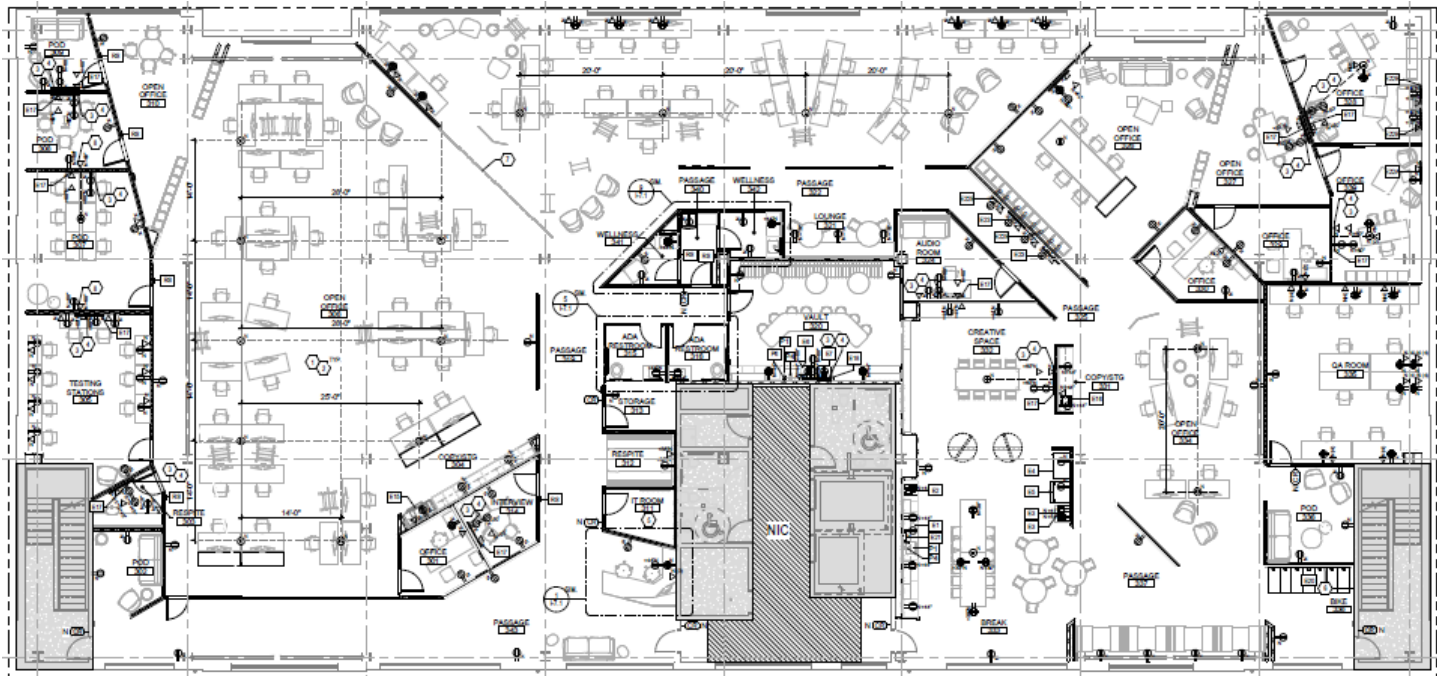
Key Highlights

- Fully wired and furnished
- Plug & Play
- Reception area
- Conference room
- Open kitchen
- Wellness room
- High ceilings
- Abundant natural light
- Speakeasy lounge area
- Walking distance to Ballard Breweries, food trucks, Salmon Bay, and downtown Ballard with numerous restaurants and retail shopping
- Next to Gilman Playground
- Convenient access to Hwy-99
- Street parking available



Creative Office Space in the Heart of Ballard

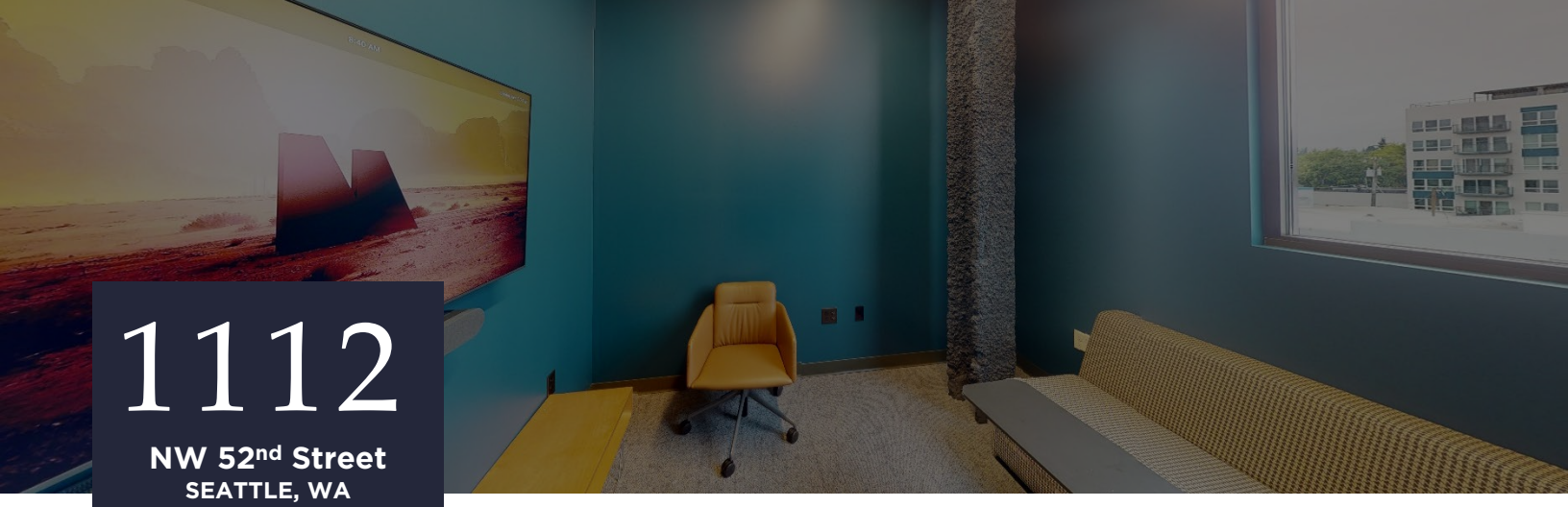
Floorplan




Matterport™
Virtual Tour



Space Overview



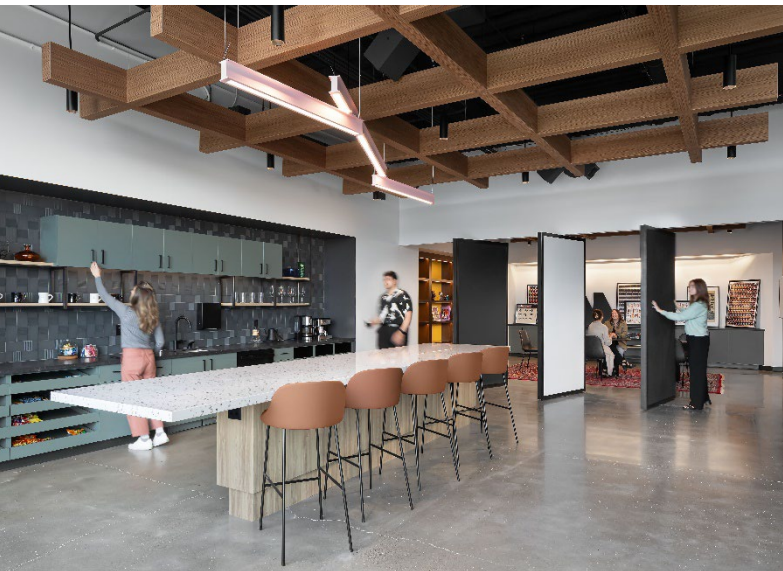
1112
NW 52nd Street
SEATTLE, WA





1112

NW 52nd Street
SEATTLE, WA



Brian Kelly
+1 206 650 0896
bkelly@savills.us

Eric Lonergan
+1 206 992 4023
elonergan@savills.us

Information contained herein has been obtained from sources deemed reliable. While we believe this information to be true, Savills makes no guarantee, warranties or representations as to the completeness or accuracy thereof. All information submitted is subject to errors and/or omissions.

savills.us

