

Bayport Plaza

3000 Bayport Drive
Suite 750
Tampa, Florida 33607

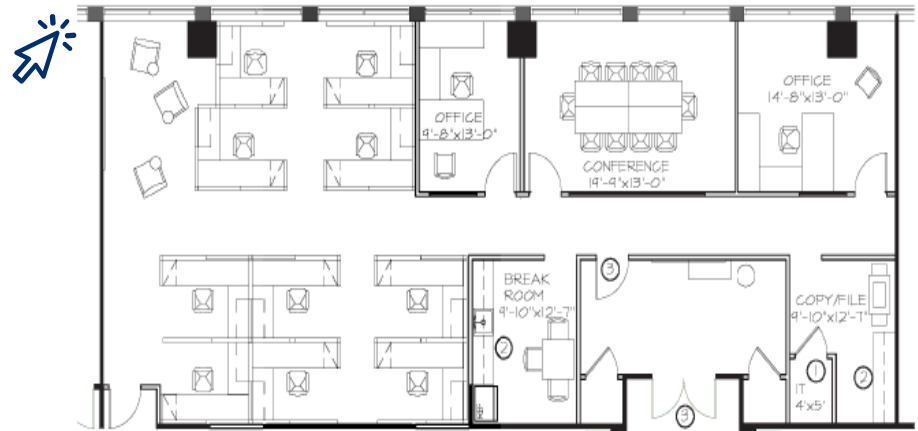


For Sublease



PROPERTY HIGHLIGHTS

- **Suite 750 - 2,652 SF**
- Rate: Negotiable
- Lease Expires: 1/31/2024
- Furniture Available
- Reception, 10 Cubicles, 2 Private Offices, Conference Room, Break Room & Work Room
- State-of-the-art Fitness Center
- On-site Café
- Shuttle to Tampa International Airport
- Direct Access to SR-60, Veterans Expressway & I-275



©2020 Cushman & Wakefield. All rights reserved. The information contained in this communication is strictly confidential. This information has been obtained from sources believed to be reliable but has not been verified. NO WARRANTY OR REPRESENTATION, EXPRESS OR IMPLIED, IS MADE AS TO THE CONDITION OF THE PROPERTY (OR PROPERTIES) REFERENCED HEREIN OR AS TO THE ACCURACY OR COMPLETENESS OF THE INFORMATION CONTAINED HEREIN, AND SAME IS SUBMITTED SUBJECT TO ERRORS, OMISSIONS, CHANGE OF PRICE, RENTAL OR OTHER CONDITIONS, WITHDRAWAL WITHOUT NOTICE, AND TO ANY SPECIAL LISTING CONDITIONS IMPOSED BY THE PROPERTY OWNER(S). ANY PROJECTIONS, OPINIONS OR ESTIMATES ARE SUBJECT TO UNCERTAINTY AND DO NOT SIGNIFY CURRENT OR FUTURE PROPERTY PERFORMANCE.

For leasing information:

KRISTIN KENNEY

Senior Associate

+1 985 788 5105

kristin.kenney@cushwake.com



CUSHMAN & WAKEFIELD

Bayport Plaza

3000 Bayport Drive
Suite 750
Tampa, Florida 33607



For Sublease

PHOTOS



©2020 Cushman & Wakefield. All rights reserved. The information contained in this communication is strictly confidential. This information has been obtained from sources believed to be reliable but has not been verified. NO WARRANTY OR REPRESENTATION, EXPRESS OR IMPLIED, IS MADE AS TO THE CONDITION OF THE PROPERTY (OR PROPERTIES) REFERENCED HEREIN OR AS TO THE ACCURACY OR COMPLETENESS OF THE INFORMATION CONTAINED HEREIN, AND SAME IS SUBMITTED SUBJECT TO ERRORS, OMISSIONS, CHANGE OF PRICE, RENTAL OR OTHER CONDITIONS, WITHDRAWAL WITHOUT NOTICE, AND TO ANY SPECIAL LISTING CONDITIONS IMPOSED BY THE PROPERTY OWNER(S). ANY PROJECTIONS, OPINIONS OR ESTIMATES ARE SUBJECT TO UNCERTAINTY AND DO NOT SIGNIFY CURRENT OR FUTURE PROPERTY PERFORMANCE.

For leasing information:

KRISTIN KENNEY

Senior Associate

+1 985 788 5105

kristin.kenney@cushwake.com



**CUSHMAN &
WAKEFIELD**