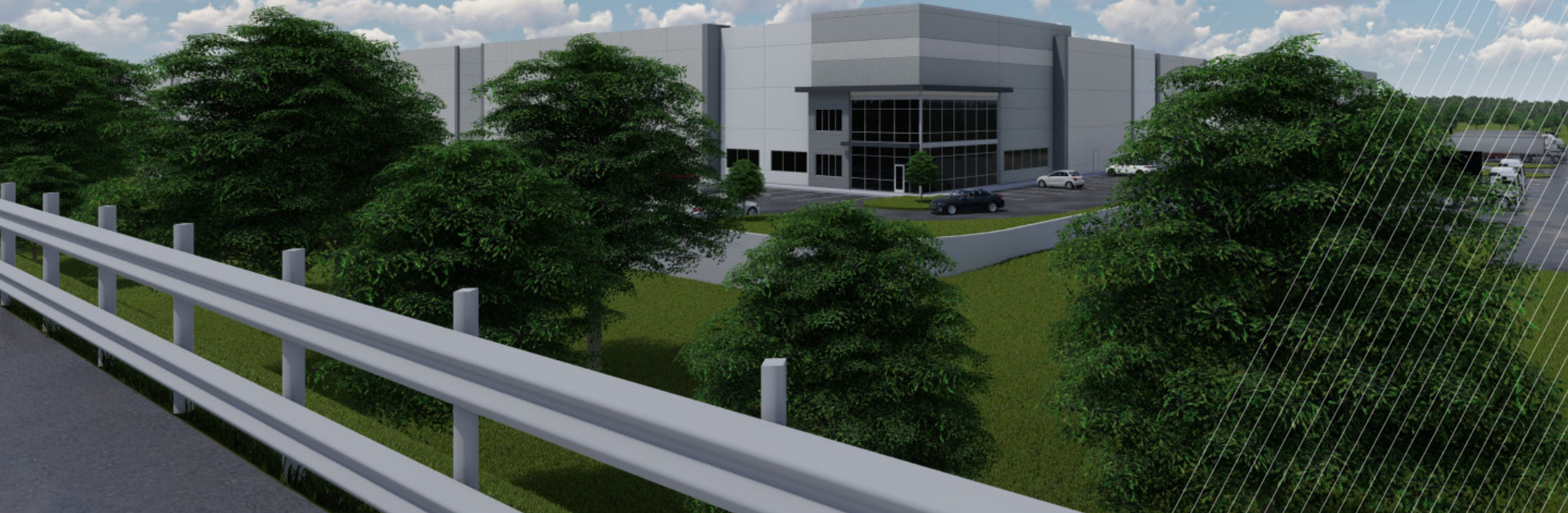




**CROSSROADS**  
INDUSTRIAL CENTER

**WEST SITE BUILDING 2**

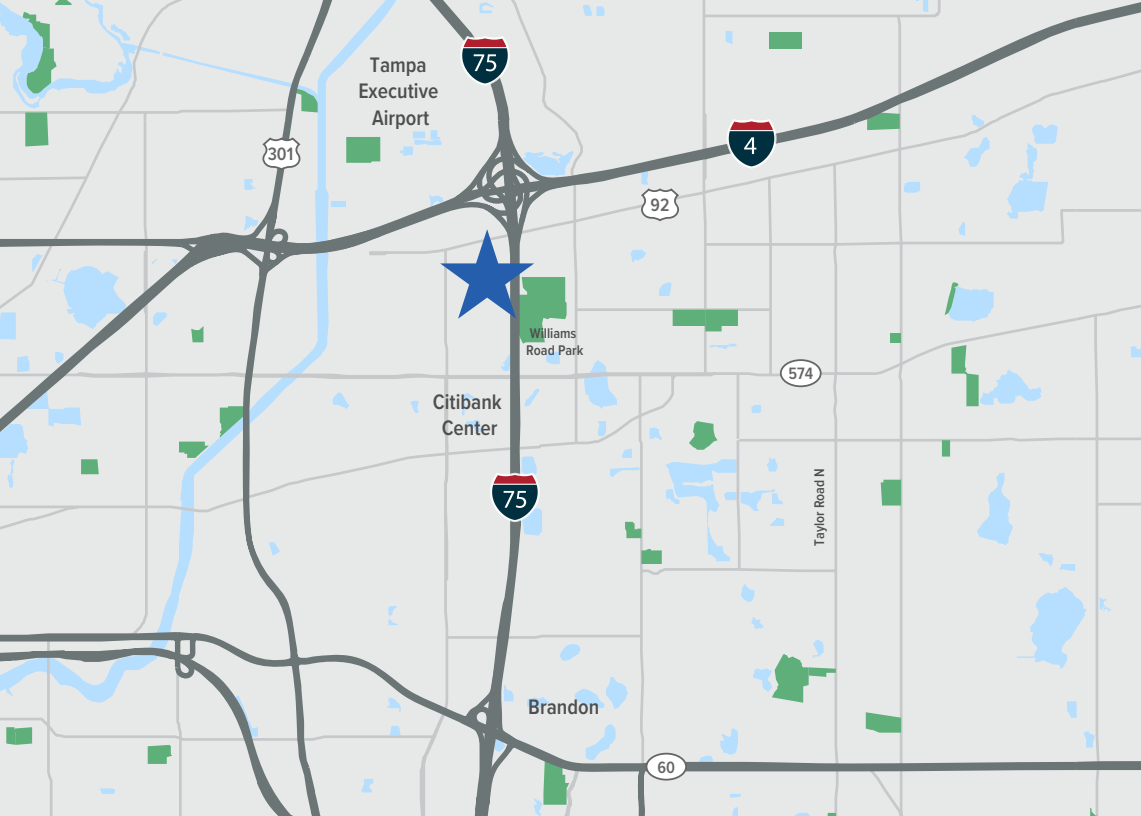
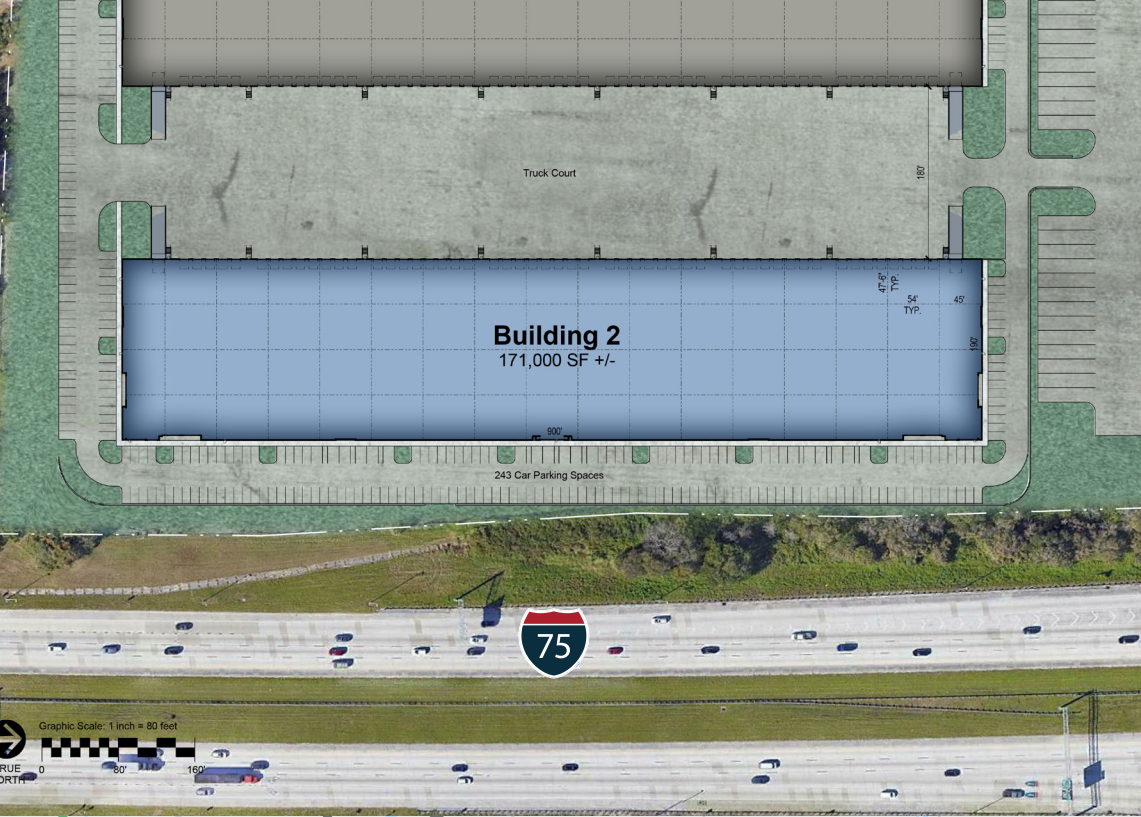
10407 Tanner Road, Tampa, FL 33610



**±171,000 SF FOR LEASE**

**Unparalleled Connectivity at the Intersection of I-75 & I-4**  
**DELIVERING Q4 2023**





# HIGHLIGHTS

Building Type: **Rear-Load**

Building Size: **171,000 Square Feet**

Dock Doors: **53 (9' x 10') Dock Highs**

Drive-In Doors: **2 (12' x 16') Ramped Drive-Ins**

Ceiling Height: **36' Minimum to Bar Joist**

Column Spacing: **54'W x 43.5'D w/ 60' Speed Bay**

Car Parking: **1.32/1,000 Parking Ratio**

Off-Dock Trailer Drops: **13**

Truck Court: **180' Deep Truck Court with 60' Concrete Apron**

Sprinkler: **ESFR**

Electrical: **TECO**

For more information, please contact:

John Jackson, CCIM, SIOR  
Managing Director  
813 424 3202  
[john.jackson@cushwake.com](mailto:john.jackson@cushwake.com)

JT Faircloth  
Director  
813 204 5362  
[jt.faircloth@cushwake.com](mailto:jt.faircloth@cushwake.com)

Casey Perry  
Associate  
813 233 6561  
[casey.perry@cushwake.com](mailto:casey.perry@cushwake.com)

One Tampa City Center, Suite 3300  
Tampa, FL 33602

©2022 Cushman & Wakefield. All rights reserved. The information contained in this communication is strictly confidential. This information has been obtained from sources believed to be reliable but has not been verified. NO WARRANTY OR REPRESENTATION, EXPRESS OR IMPLIED, IS MADE AS TO THE CONDITION OF THE PROPERTY (OR PROPERTIES) REFERENCED HEREIN OR AS TO THE ACCURACY OR COMPLETENESS OF THE INFORMATION CONTAINED HEREIN, AND SAME IS SUBMITTED SUBJECT TO ERRORS, OMISSIONS, CHANGE OF PRICE, RENTAL OR OTHER CONDITIONS, WITHDRAWAL WITHOUT NOTICE, AND TO ANY SPECIAL LISTING CONDITIONS IMPOSED BY THE PROPERTY OWNER(S). ANY PROJECTIONS, OPINIONS OR ESTIMATES ARE SUBJECT TO UNCERTAINTY AND DO NOT SIGNIFY CURRENT OR FUTURE PROPERTY PERFORMANCE.

