

# 1266 SOUTH SERVICE ROAD

STONEY CREEK



**OFFICE SPACE  
FOR SUBLEASE  
6,992 SF AVAILABLE**



**CUSHMAN &  
WAKEFIELD**

August 2024





# 1266 SOUTH SERVICE ROAD

STONEY CREEK

## HIGHLIGHTS

- Prime Office Space On The 2nd Floor
- Located In The Sought-After Stoney Creek Business Park
- Right Off The QEW
- Fully Built-Out And Professionally Finished With Furniture Available
- Various Amenities Within Walking Distance
- Plenty Of Surface Parking

## DETAILS

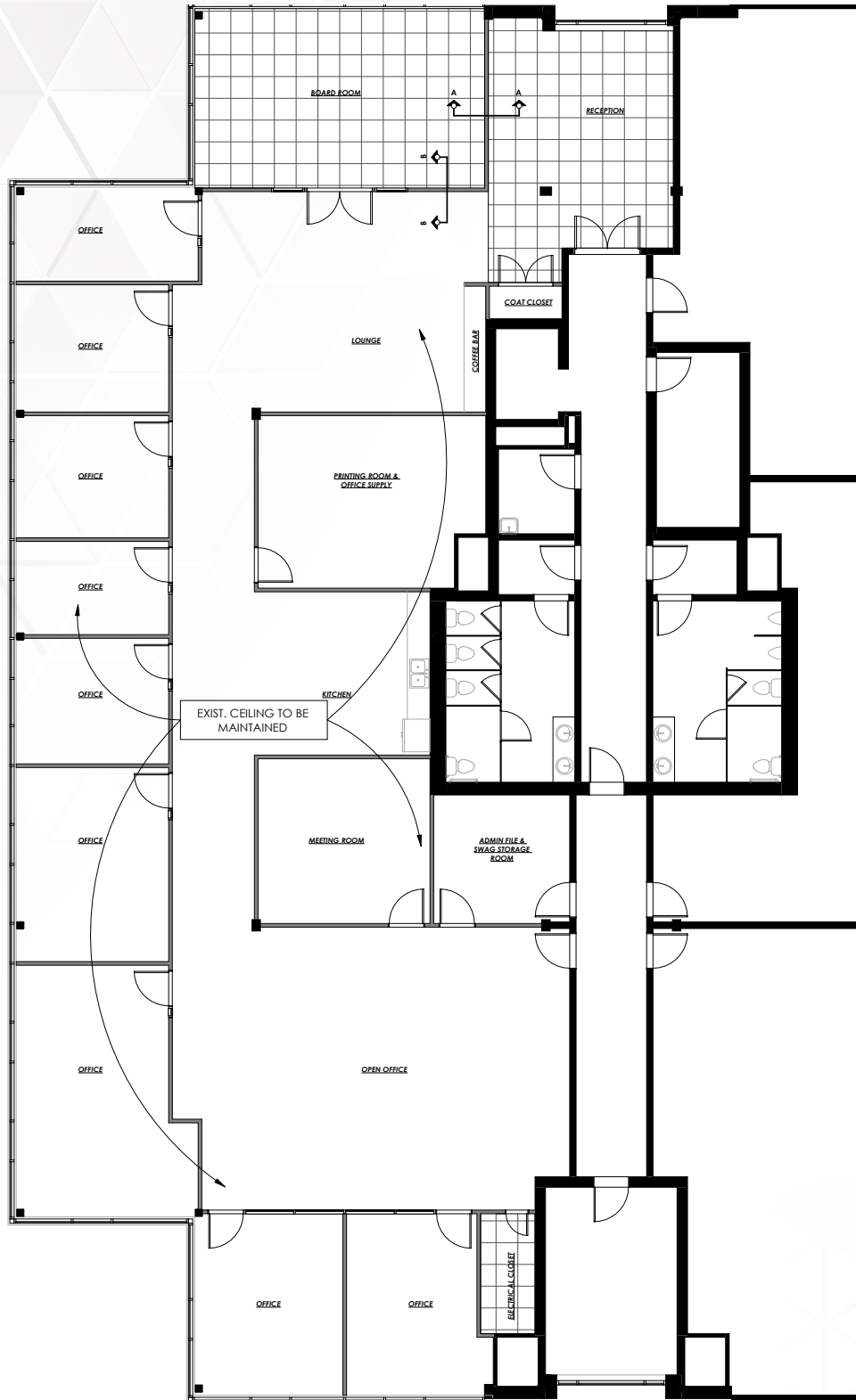
Area:	6,992 SF
Net Rent:	\$13.50 PSF
Additional Rent:	\$6.55 PSF (2024)
Occupancy:	30 days
Sublease Term:	Until May 30, 2028



# FLOORPLAN

SUITE A2-1, A2-3 & A2-5

6,992 SF





# 1266 SOUTH SERVICE ROAD

STONEY CREEK





# 1266 SOUTH SERVICE ROAD

STONEY CREEK



WINONA ROAD

QUEEN ELIZABETH WAY

## Winona Plaza

- Tim Hortons
- Noodlebox
- Sunset Grill
- Pizza Hut
- Metro Winona
- Baskin-Robbins
- Freshii
- Great Clips
- Costco
- Kelseys
- Dollarama
- Turtle Jacks
- Starbucks
- Burger King
- RBC Royal Bank
- LCBO
- Pizza Hut
- Hangry Chicken
- TD Canada Trust
- CoCo Fresh Tea
- Booster Juice
- Pho May





# 1266

## SOUTH SERVICE ROAD STONEY CREEK



For more information, please contact:

**MARC DANKO\***

Senior Vice President

+1 905 501 6467

[marc.danko@cushwake.com](mailto:marc.danko@cushwake.com)

**Cushman & Wakefield ULC, Brokerage**

1 Prologis Boulevard, Suite 300

Mississauga, Ontario L5W 0G2

Tel: +1 905 568 9500

[cushmanwakefield.com](http://cushmanwakefield.com)

©2024 Cushman & Wakefield. All rights reserved. The information contained in this communication is strictly confidential. This information has been obtained from sources believed to be reliable but has not been verified. NO WARRANTY OR REPRESENTATION, EXPRESS OR IMPLIED, IS MADE AS TO THE CONDITION OF THE PROPERTY (OR PROPERTIES) REFERENCED HEREIN OR AS TO THE ACCURACY OR COMPLETENESS OF THE INFORMATION CONTAINED HEREIN, AND SAME IS SUBMITTED SUBJECT TO ERRORS, OMISSIONS, CHANGE OF PRICE, RENTAL OR OTHER CONDITIONS, WITHDRAWAL WITHOUT NOTICE, AND TO ANY SPECIAL LISTING CONDITIONS IMPOSED BY THE PROPERTY OWNER(S). ANY PROJECTIONS, OPINIONS OR ESTIMATES ARE SUBJECT TO UNCERTAINTY AND DO NOT SIGNIFY CURRENT OR FUTURE PROPERTY PERFORMANCE. \*SALES REPRESENTATIVE