

# 4821

## VIEWRIDGE AVE

SAN DIEGO, CA 92123

**FOR LEASE  
IN KEARNY MESA**

APPROX. **3,958** USABLE SF

SINGLE STORY OFFICE SPACE  
GROUND FLOOR ENTRY  
4/1000 PARKING

**GLENN ARNOLD, SIOR**

Executive Director  
+1 858 546 5455  
glenn.arnold@cushwake.com  
LIC #01383140

**MILES ARNOLD**

Associate  
+1 858 558 5627  
miles.arnold@cushwake.com  
LIC #02094013

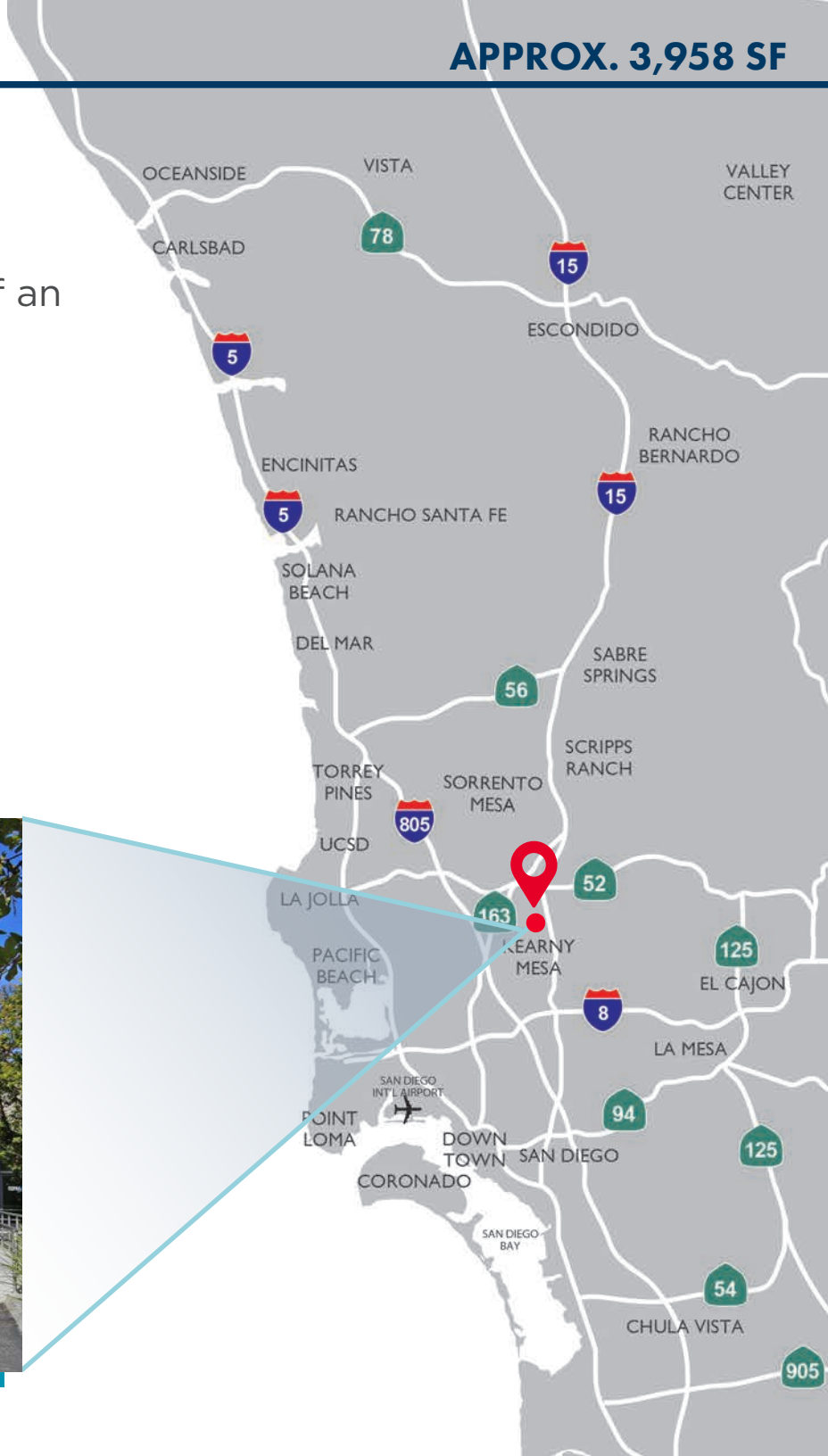
12830 El Camino Real, Suite 100  
San Diego, CA 92130  
T: +1 858 546 5400  
F: +1 858 630 6320  
www.cushmanwakefield.com



# PROPERTY DETAILS

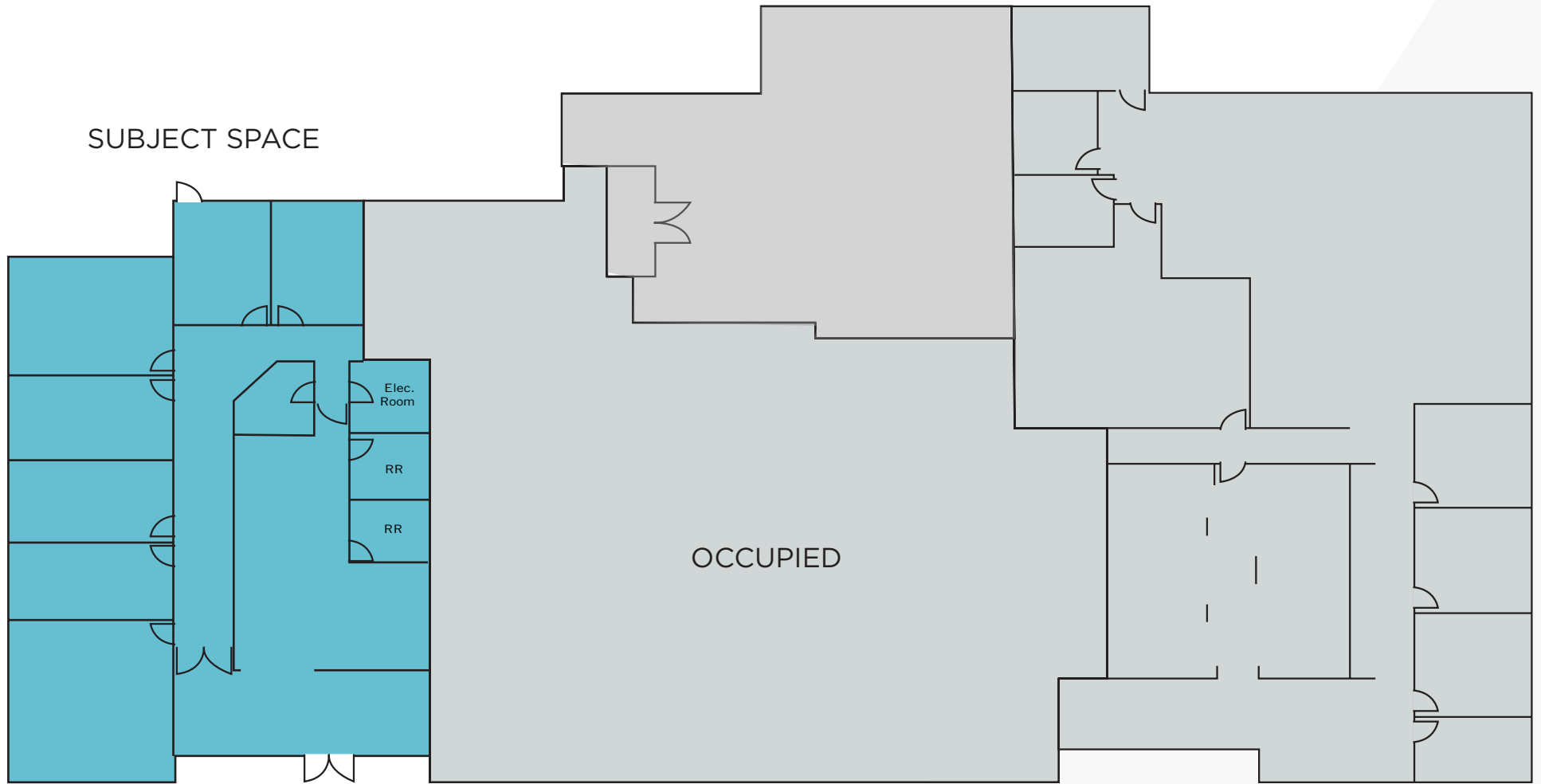
APPROX. 3,958 SF

- » Approximately 3,958 usable SF available - part of an approximately 18,654 SF multi-tenant building
- » Easy access to all major freeways
- » \$2.05 psf/month, MG (plus utilities and janitorial)
- » Zoning: IL-2-1
- » Parking Ratio: 4.0/1,000 SF
- » Available: July 1, 2021

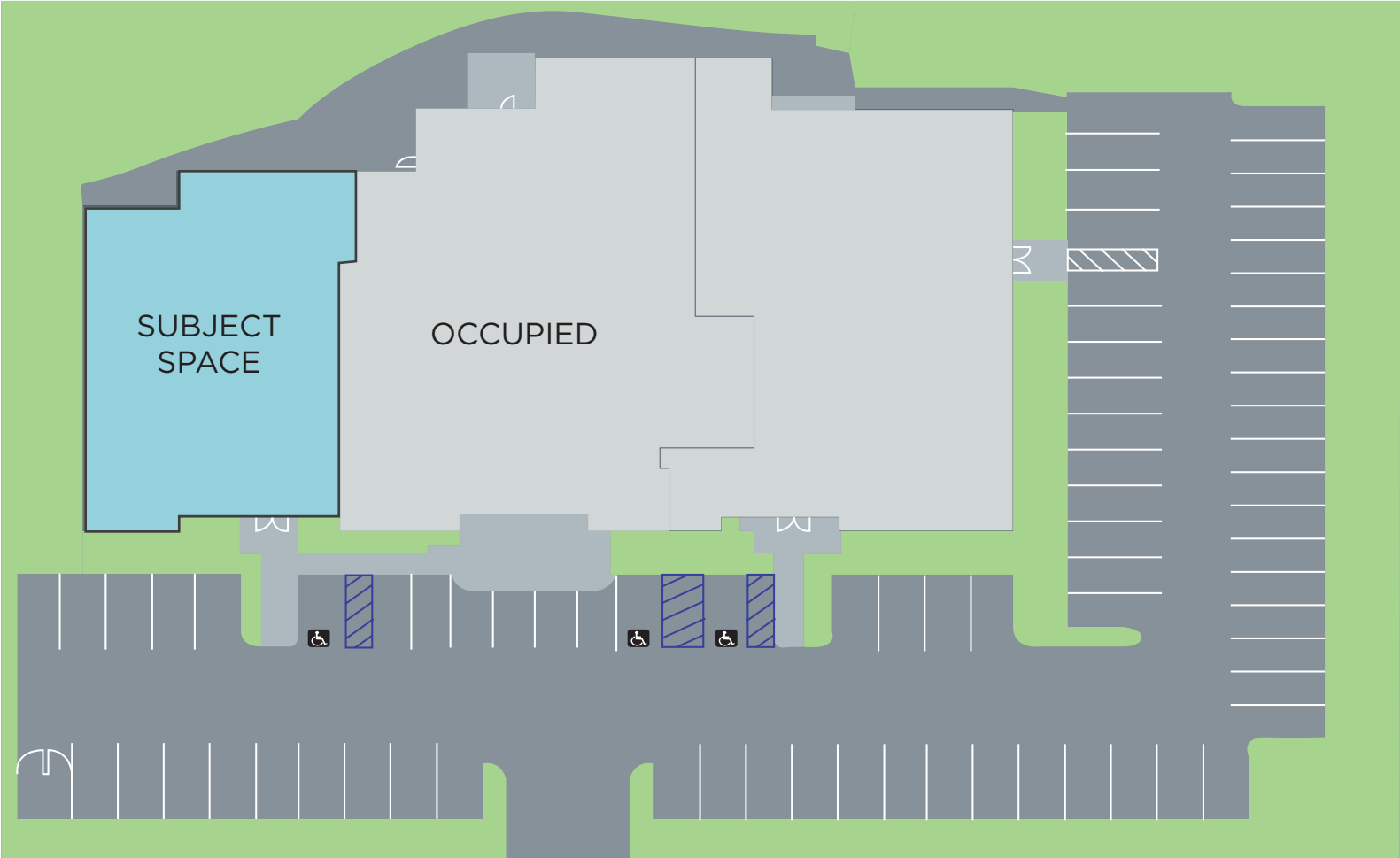


# FLOOR PLAN (est.)

APPROX. 3,958 SF



# SITE PLAN (est.)



ing West

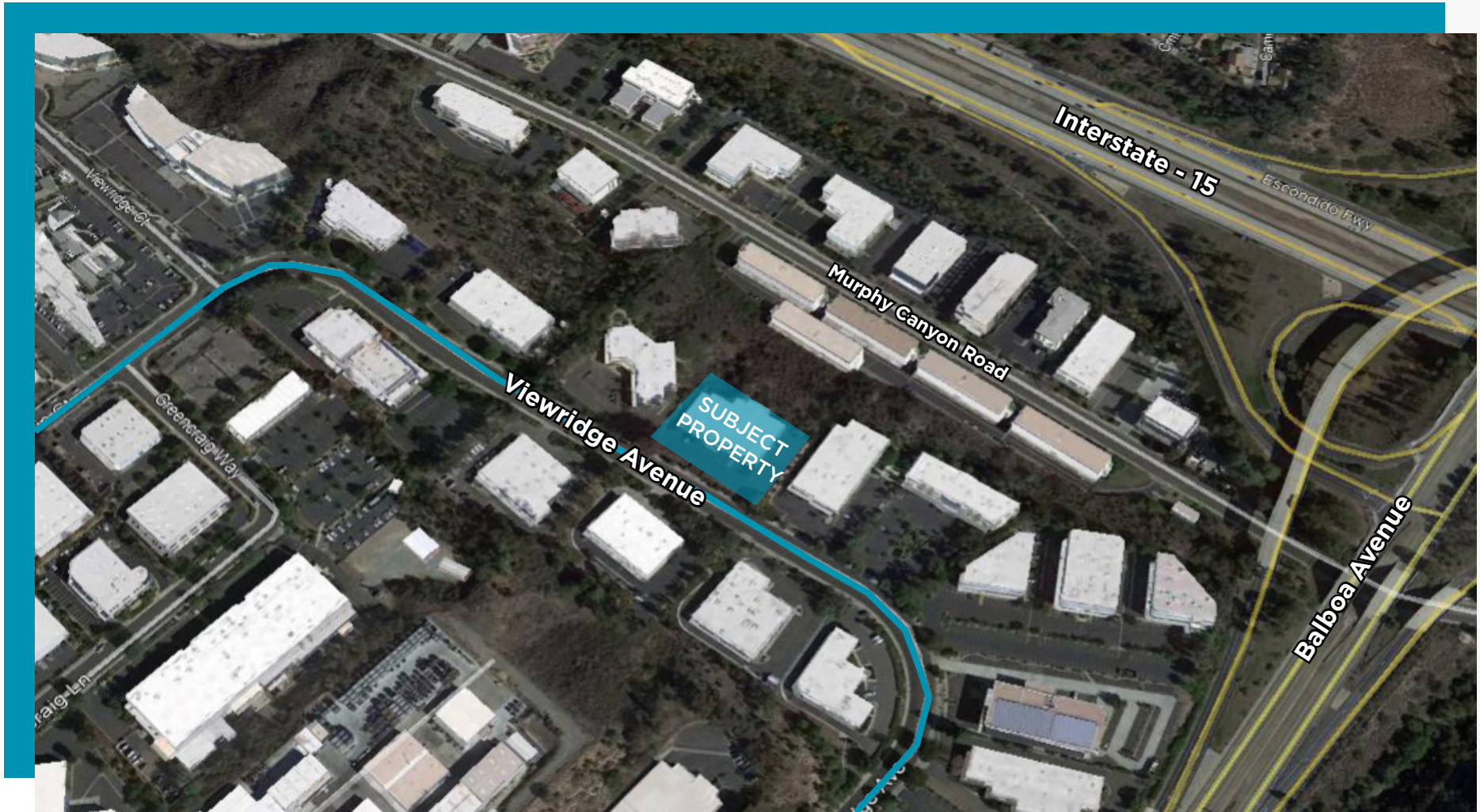
# PHOTOS

PLAN (est.)



# AERIAL MAP

APPROX. 3,958 SF



## GLENN ARNOLD, SIOR

Executive Director  
+1 858 546 5455  
glenn.arnold@cushwake.com  
LIC #01383140

## MILES ARNOLD

Associate  
+1 858 558 5627  
miles.arnold@cushwake.com  
LIC #02094013

12830 El Camino Real, Suite 100  
San Diego, CA 92130  
T: +1 858 546 5400  
F: +1 858 630 6320  
www.cushmanwakefield.com

