

HEMBREE PARK

245 Hembree Park Drive Roswell, GA 30076

FOR LEASE

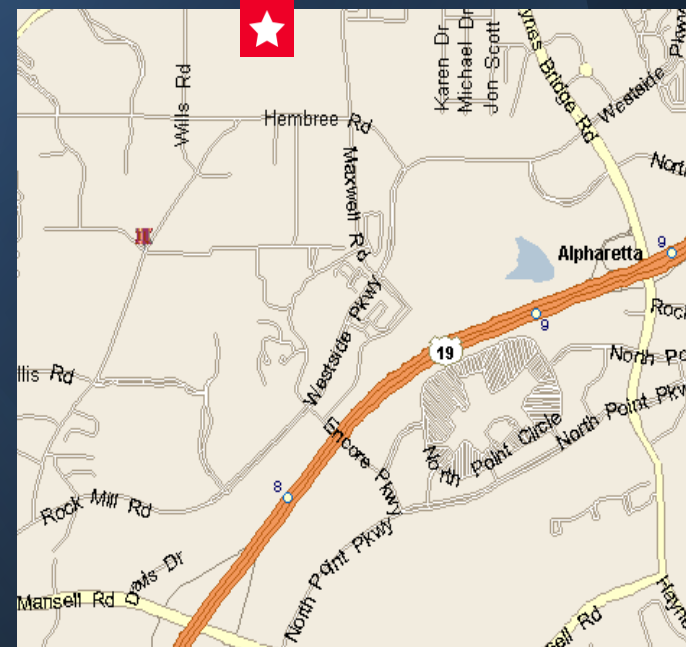
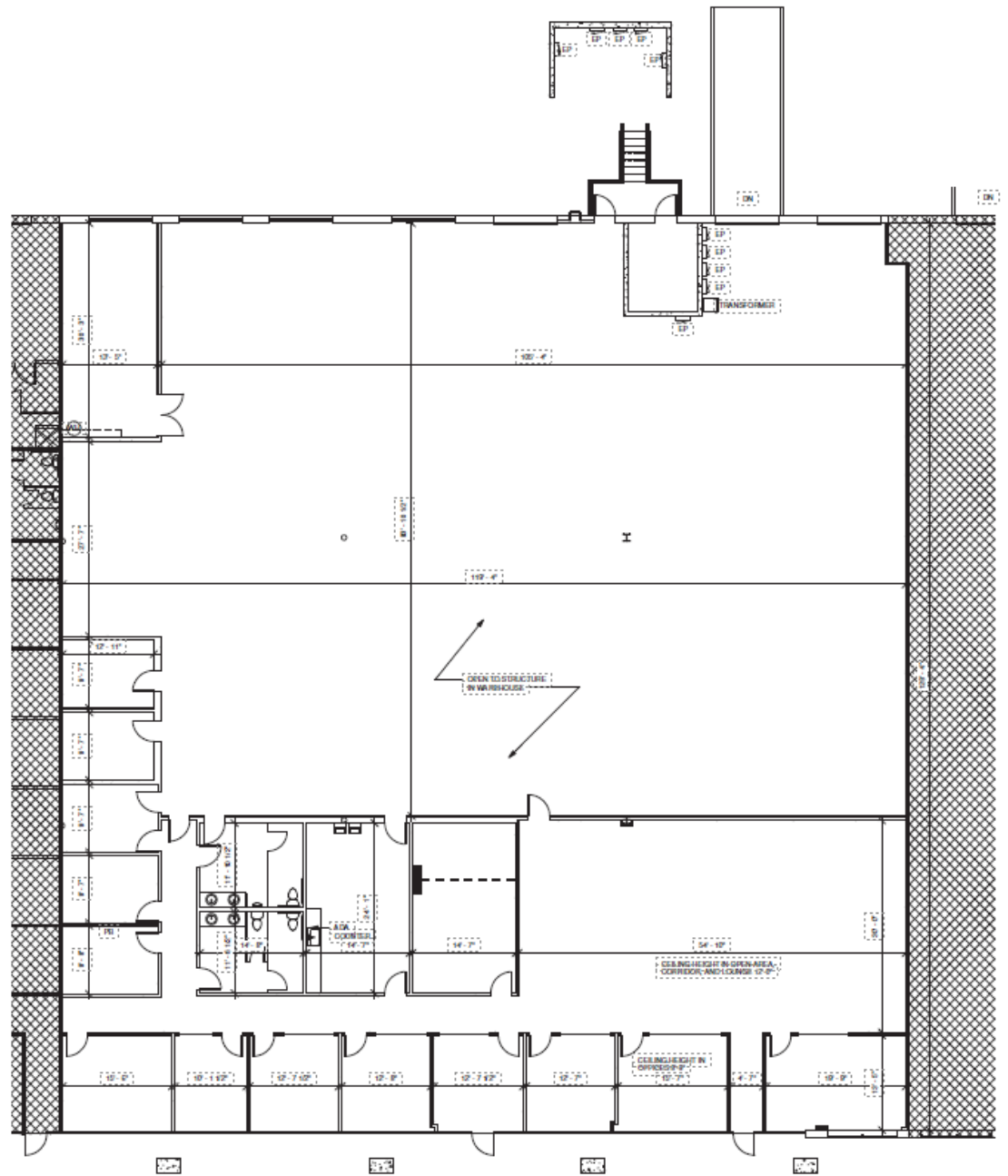
16,200 SF | SUITE 110



Floor Plan – Suite 110

16,200 SF

- 103,826 SF Total Building
- Built in 1999
- 6,090 SF office
- 10,110 SF warehouse
- 4 docks
- 1 ramped door
- 24' clear height



©2022 Cushman & Wakefield. All rights reserved.
 This information has been obtained from sources believed to be reliable but has not been verified.
 NO WARRANTY OR REPRESENTATION, EXPRESS OR IMPLIED, IS MADE AS TO THE CONDITION OF THE PROPERTY (OR PROPERTIES) REFERENCED HEREIN OR AS TO THE ACCURACY OR COMPLETENESS OF THE INFORMATION CONTAINED HEREIN, AND SAME IS SUBMITTED SUBJECT TO ERRORS, OMISSIONS, CHANGE OF PRICE, RENTAL OR OTHER CONDITIONS, WITHDRAWAL WITHOUT NOTICE, AND TO ANY SPECIAL LISTING CONDITIONS IMPOSED BY THE PROPERTY OWNER(S). ANY PROJECTIONS, OPINIONS OR ESTIMATES ARE SUBJECT TO UNCERTAINTY AND DO NOT SIGNIFY CURRENT OR FUTURE PROPERTY PERFORMANCE.

PAT MURPHY
 Managing Director
 Direct: 404 682 3405
 Cellular: 770 853 8796

ANDREW THURMAN
 Senior Associate
 Direct: 404 682 3429
 Cellular: 404 775 2268

TARA HEALY
 Director
 Direct: 404 682 3430
 Cellular: 678 468 9133



1180 Peachtree St NE, Suite 3100
 Atlanta, Georgia 30309