



## PARK JEFFERSON



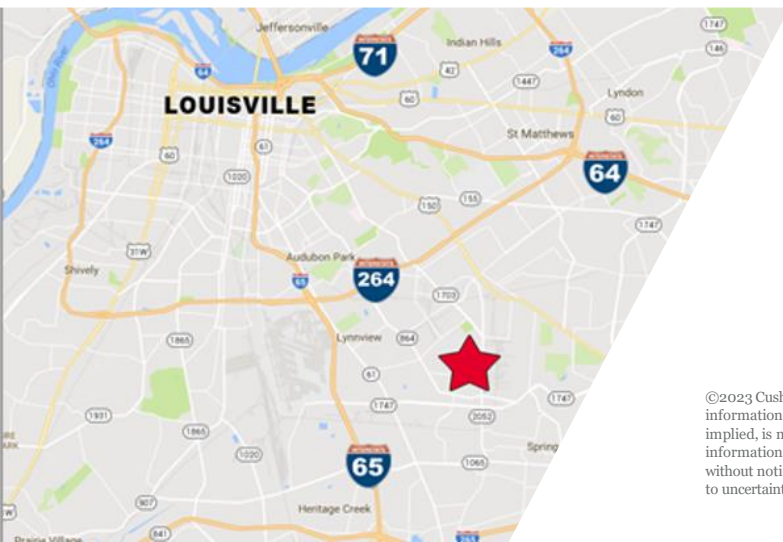
# 5594 SHEPHERDSVILLE RD

Louisville, KY 40228

**17,550 SF AVAILABLE  
FOR LEASE**

## PROPERTY HIGHLIGHTS

- 3,964 sf of finished office
- Air-conditioned warehouse space
- LED lighting
- One (1) dock-high loading door
- One (1) drive-in door (10' x 10')
- 480 volt; 200 amps; 3-phase
- 19' – 22' clear height
- M-2 zoning



### GREG CHARMOLI

Senior Director

+1 502 589 5150 ext. 238

[gcharmoli@commercialkentucky.com](mailto:gcharmoli@commercialkentucky.com)

333 E. Main Street, Suite 510 | Louisville, KY 40202

+1 502 589 5150

[www.CommercialKentucky.com](http://www.CommercialKentucky.com)

©2023 Cushman & Wakefield. All rights reserved. The information contained in this communication is strictly confidential. This information has been obtained from sources believed to be reliable but has not been verified. No warranty or representation, express or implied, is made as to the condition of the property (or properties) referenced herein or as to the accuracy or completeness of the information contained herein, and same is submitted subject to errors, omissions, change of price, rental or other conditions, withdrawal without notice, and to any special listing conditions imposed by the property owner(s). Any projections, opinions or estimates are subject to uncertainty and do not signify current or future property performance.

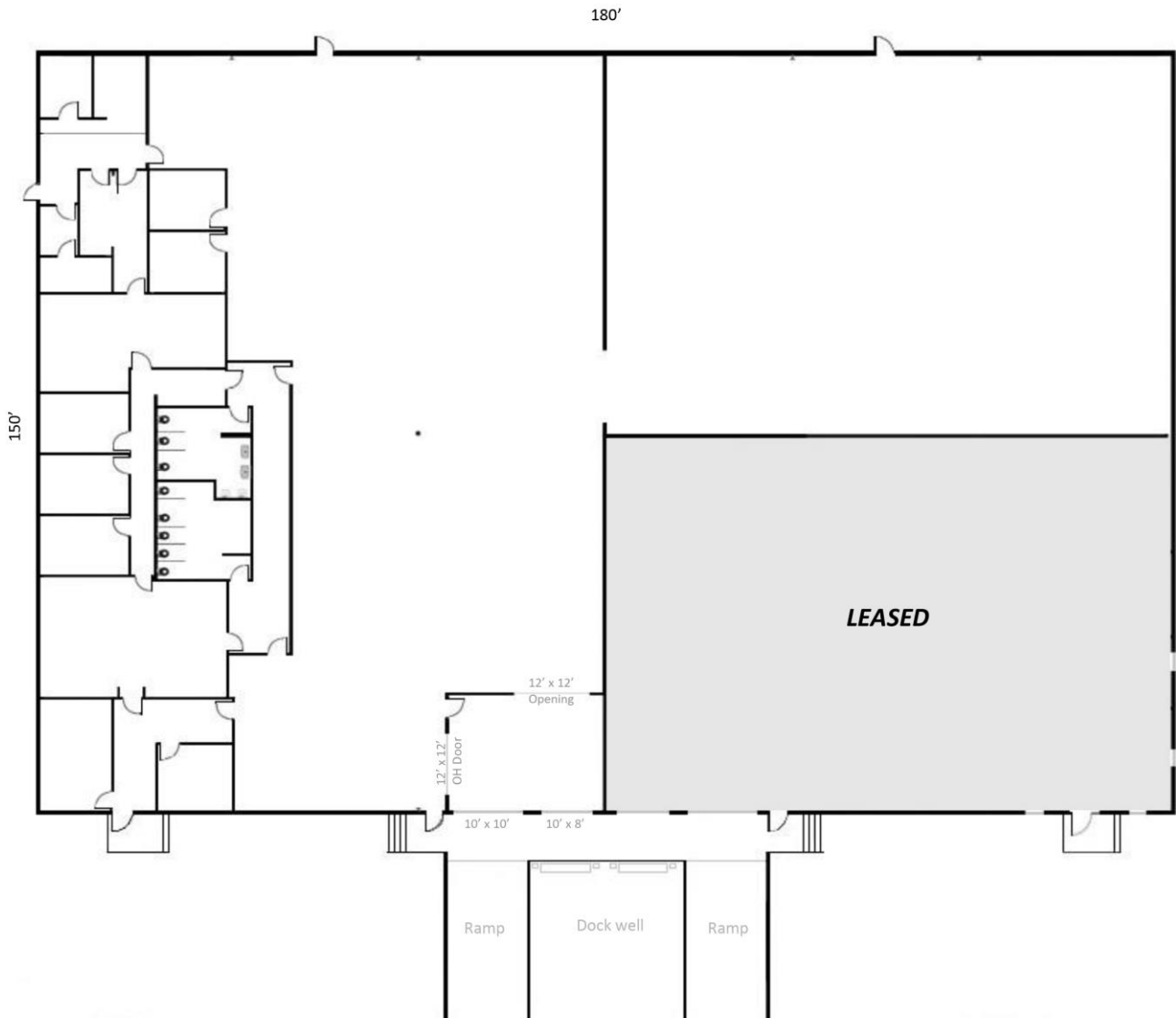
# 5594 SHEPHERDSVILLE RD

Louisville, KY 40228

**17,550 SF FOR LEASE**



## FLOOR PLAN



**GREG CHARMOLI**  
Senior Director  
+1 502 589 5150 ext. 238  
gcharmoli@commercialkentucky.com

333 E. Main Street, Suite 510  
Louisville, KY 40202  
phone: +1 502 589 5150  
www.CommercialKentucky.com