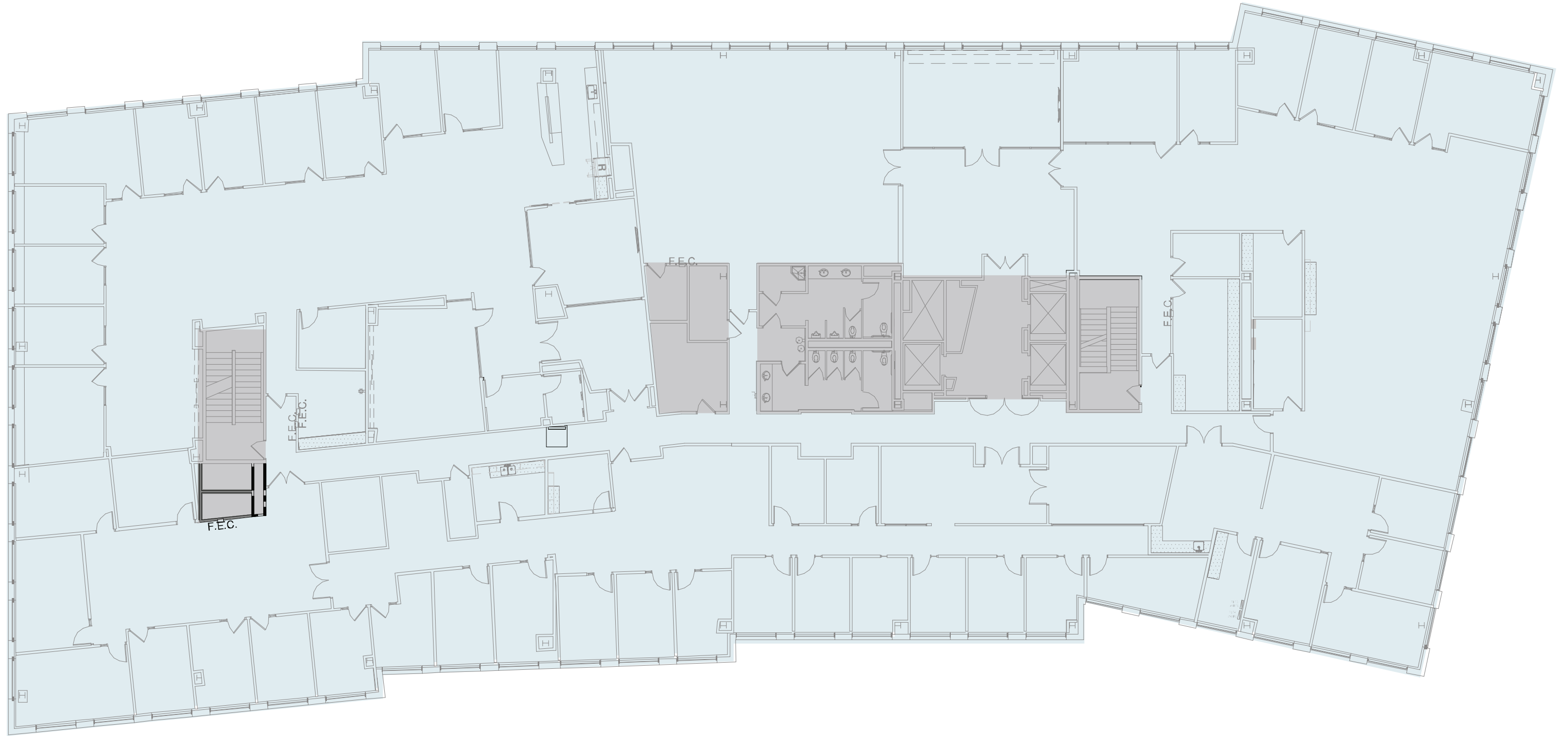


As-Built Floor Plan

- Lab
- Office



Hypothetical Floor Plan

- 50% Lab
- 50% Office

Totals

| | |
|---|-----|
| Private Office | 5 |
| Work Station (6'x6x) | 57 |
| Touchdown | 28 |
| Open Collaboration | 2 |
| Medium Conference (8 Seats) | 3 |
| Huddle Room (5 Seats) | 2 |
| Phone Room (2 Seats) | 1 |
| Fume Hoods | 8 |
| Lab Knee Holes | 112 |
| Lab Support Room | 9 |

Legend

| | |
|--|--|
| Lab | Building Support |
| Lab Support | Lobby/Reception |
| Open Office | Collaboration |
| Office | Conference |
| Office Support | Break Room |

