

1855 | DORNOCH COURT



OTAY MESA | CALIFORNIA



FOR LEASE | 62,576 SF WAREHOUSE / DISTRIBUTION SUITES WITH TRAILER PARKING

PROJECT SUMMARY

1855 DORNOCH COURT, SAN DIEGO, CA 92154 | OTAY MESA

TOTAL SQ FT 210,156 SF

BUILDING Industrial Distribution Building

YEAR BUILT 1988 (major renovations in 2020)

SITE AREA 10.59 Acres (461,300 SF)

COLUMN SPACING 60' x 40'

TRAILER PARKING Trailer Parking Available

CONSTRUCTION Reinforced concrete

CLEAR HEIGHTS 26'-28'

LOADING Dock high and grade level

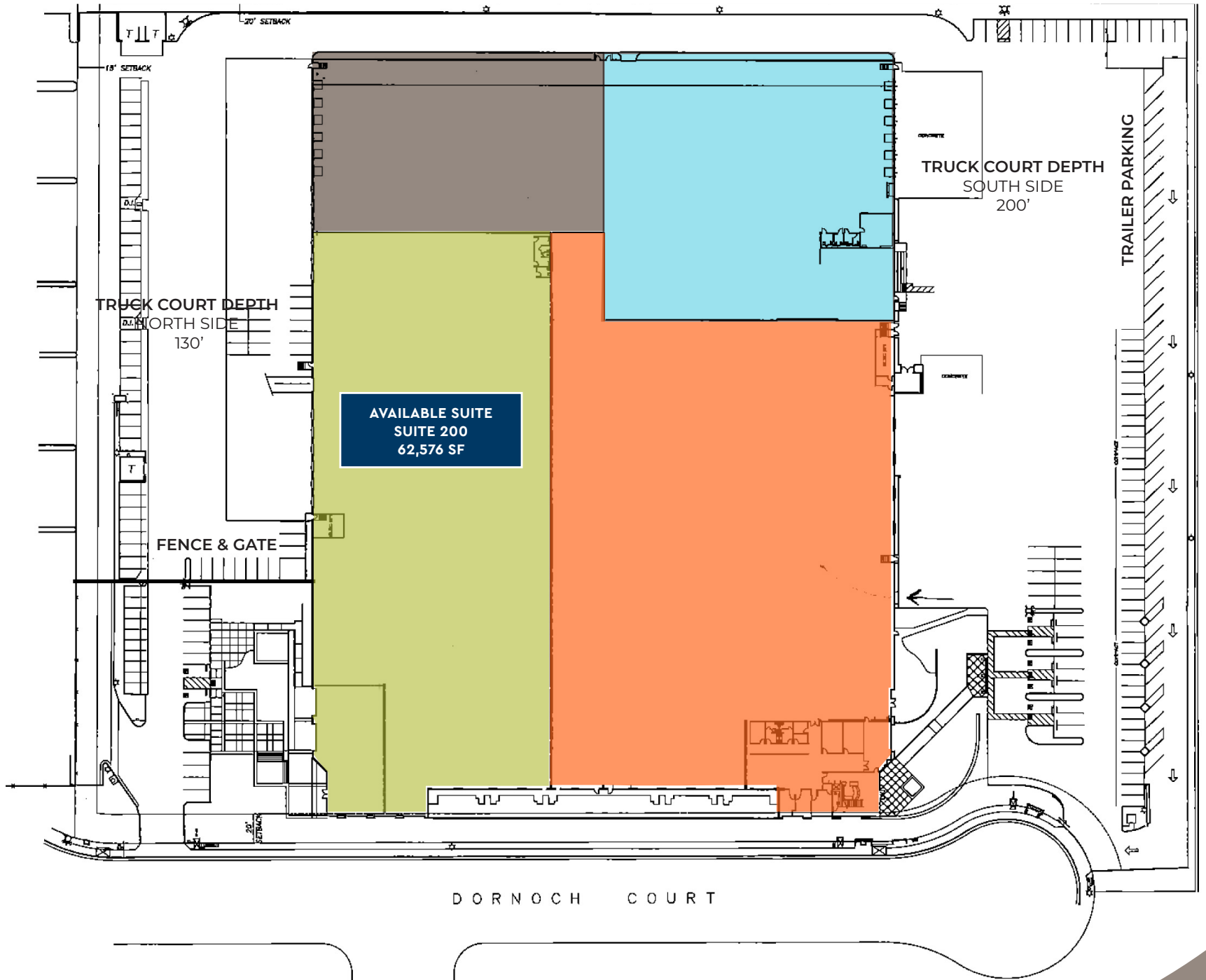
SPRINKLERS ESFR installed in 2016

ELECTRICAL 200-4,000 amps / 277/480v

PARKING RATIO 1.28 per 1,000 SF



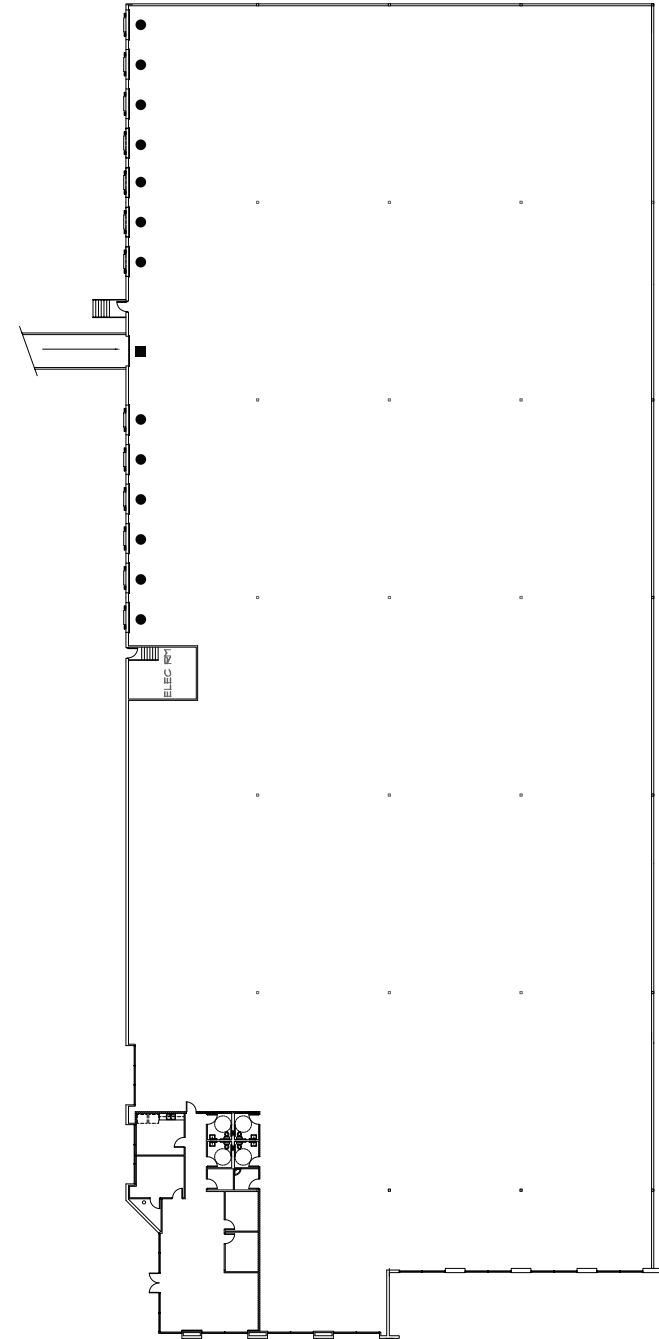
SITE PLAN



AVAILABLE SUITE

1855 DORNOCH COURT SUITE 200

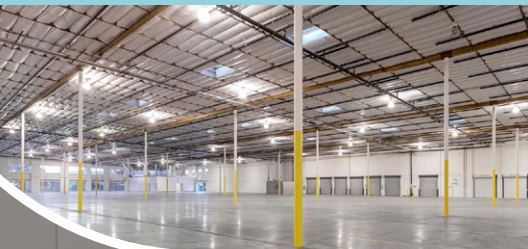
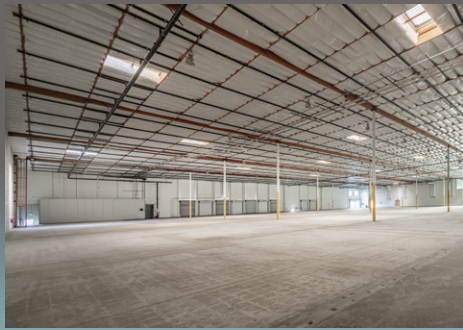
TOTAL SQ FT	62,576 SF
BUILDOUT	Small office area, 4 restrooms, shower & break room
LOADING	13 Dock high loading doors (expandable), 1 grade level loading door
COLUMN SPACING	60' x 40'
AVAILABILITY	30 Day Notice
RENTAL RATE	Contact broker
NNN	±\$0.32



■ = Dock High Loading
● = Grade Level Loading

CORPORATE NEIGHBORS







1855 | DORNOCH COURT



OTAY MESA | CALIFORNIA

BRANT ABERG, SIOR

858.546.5464
brant.aberg@cushwake.com
CA Lic. 01773573

TRENT SMITH

858.334.4028
trent.smith@cushwake.com
Lic. 02189114



12830 El Camino Real, Suite 100
San Diego, CA 92130
858.452.6500 | 858.630.6320
cushmanwakefield.com

©Cushman & Wakefield. All rights reserved. This information has been obtained from sources believed to be reliable but has not been verified. NO WARRANTY OR REPRESENTATION, EXPRESS OR IMPLIED, IS MADE AS TO THE CONDITION OF THE PROPERTY (OR PROPERTIES) REFERENCED HEREIN OR AS TO THE ACCURACY OR COMPLETENESS OF THE INFORMATION CONTAINED HEREIN, AND SAME IS SUBMITTED SUBJECT TO ERRORS, OMISSIONS, CHANGE OF PRICE, RENTAL OR OTHER CONDITIONS, WITHDRAWAL WITHOUT NOTICE, AND TO ANY SPECIAL LISTING CONDITIONS IMPOSED BY THE PROPERTY OWNER(S).