



FOR LEASE

30481 Whipple Road

Alvarado Business Park | Union City, California

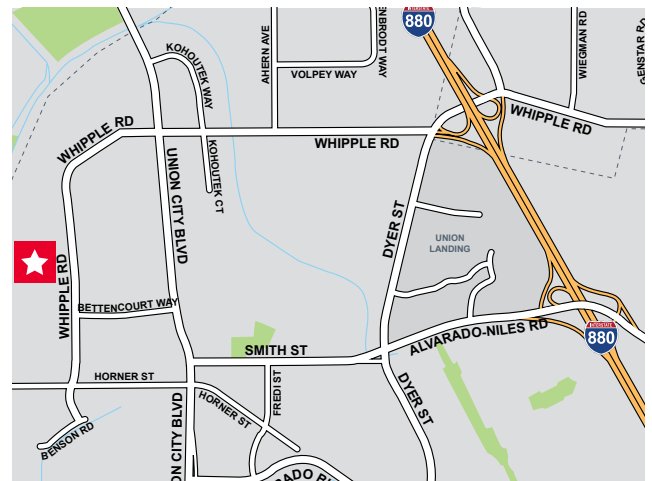


Property Highlights

- ±24,576 SF Available with Fenced Yard of ±40,000 SF
- ±3,480 SF of Office Space
- End Unit with Fenced & Paved Fully Secured Yard Area (±40,000 SF Side Yard and Rear Paved Area Between the Two Buildings)
- 5 Dock Doors
- 2 Grade Level Doors
- ±24' Minimum Clear Height
- ±24'x60' Typical Column Spacing
- ±0.33 GPM/Sprinkler System
- LED: 07/31/20

Call Broker For Rate & Touring Instructions

ALVARADO BUSINESS PARK is a 10 building 1.2 million square foot business park with close access to I-880 and HWY 92 offering solutions for today and expansion for future growth.



Deutsche
Asset Management



Jeff Starkovich, SIOR
Executive Managing Director
+1 510 267 6020
jeff.starkovich@cushwake.com
LIC #00644571 | cushmanwakefield.com



Mark Maguire, SIOR
Exec. Vice President
+1 510 433 5835
mark.maguire@colliers.com
LIC #01190597 | www.colliers.com



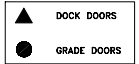
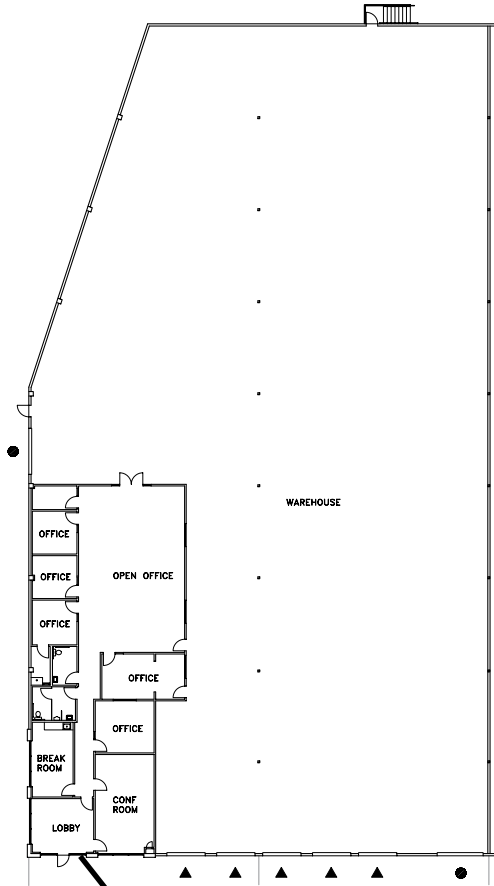


CUSHMAN & WAKEFIELD

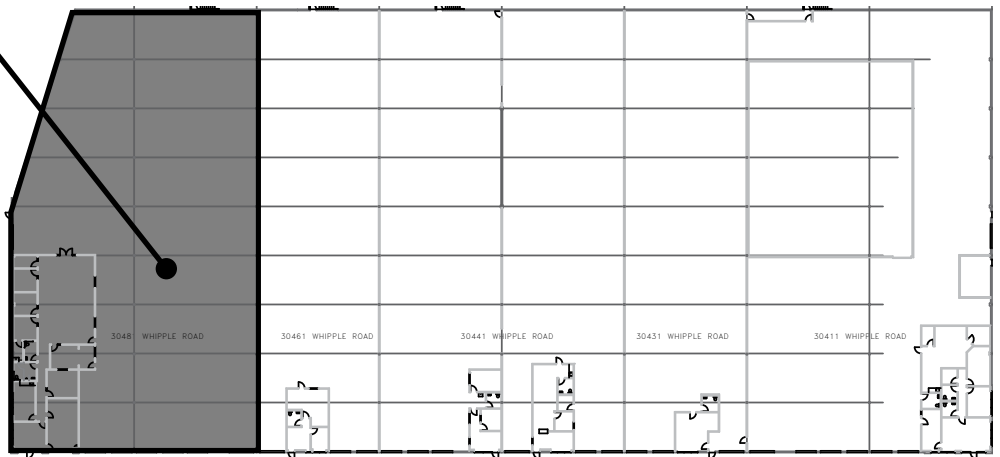
FOR LEASE

30481 Whipple Road

Alvarado Business Park | Union City, California



OFFICE AREA: 3,624 S.F.
 WAREHOUSE AREA: 20,847 S.F.
 WAREHOUSE HEIGHT: 24' APPROXIMATE



Visit Site Specific COVID-19 Prevention Plan

Deutsche Asset Management



Jeff Starkovich, SIOR
 Executive Managing Director
 +1 510 267 6020
 jeff.starkovich@cushwake.com
 LIC #00644571 | cushmanwakefield.com



Mark Maguire, SIOR
 Exec. Vice President
 +1 510 433 5835
 mark.maguire@colliers.com
 LIC #01190597 | www.colliers.com



©2020 Cushman & Wakefield. All rights reserved. The information contained in this communication is strictly confidential. This information has been obtained from sources believed to be reliable but has not been verified. NO WARRANTY OR REPRESENTATION, EXPRESS OR IMPLIED, IS MADE AS TO THE CONDITION OF THE PROPERTY (OR PROPERTIES) REFERENCED HEREIN OR AS TO THE ACCURACY OR COMPLETENESS OF THE INFORMATION CONTAINED HEREIN, AND SAME IS SUBMITTED SUBJECT TO ERRORS, OMISSIONS, CHANGE OF PRICE, RENTAL OR OTHER CONDITIONS, WITHDRAWAL WITHOUT NOTICE, AND TO ANY SPECIAL LISTING CONDITIONS IMPOSED BY THE PROPERTY OWNER(S). ANY PROJECTIONS, OPINIONS OR ESTIMATES ARE SUBJECT TO UNCERTAINTY AND DO NOT SIGNIFY CURRENT OR FUTURE PROPERTY PERFORMANCE.