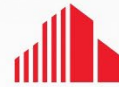


FOR DIRECT LEASE

**3016 Atlanta Road
Smyrna, Georgia 30080**



**CUSHMAN &
WAKEFIELD**



9,894 SF AVAILABLE

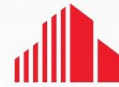
SPACE FEATURES & HIGHLIGHTS

- *Extremely high traffic visibility at the intersection of Atlanta Rd. and Spring Rd./Concord Rd.*
- *Walkable to nearby restaurants and retail*
- *Highly visible building signage available*
- *100+ Surface parking spots available, free*
- *7-minute drive to Truist Park and The Battery*
- *6-minute drive to I-285*
- *Furniture available upon request*
- *Below market load factor*



FOR DIRECT LEASE

3016 Atlanta Road
Smyrna, Georgia 30080



CUSHMAN &
WAKEFIELD

FLOOR PLAN

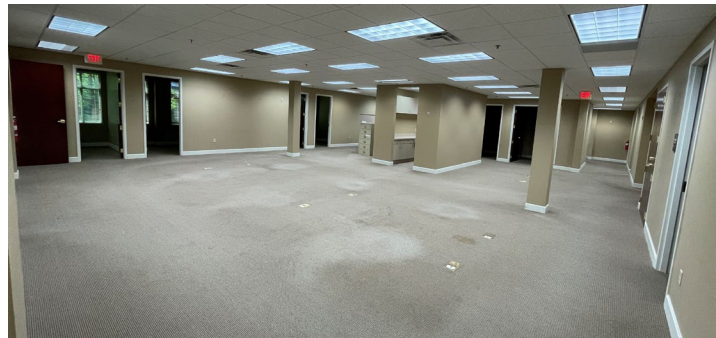
SECOND FLOOR AVAILABLE: 9,894 RSF



FOR DIRECT LEASE
3016 Atlanta Road
Smyrna, Georgia 30080



GALLERY

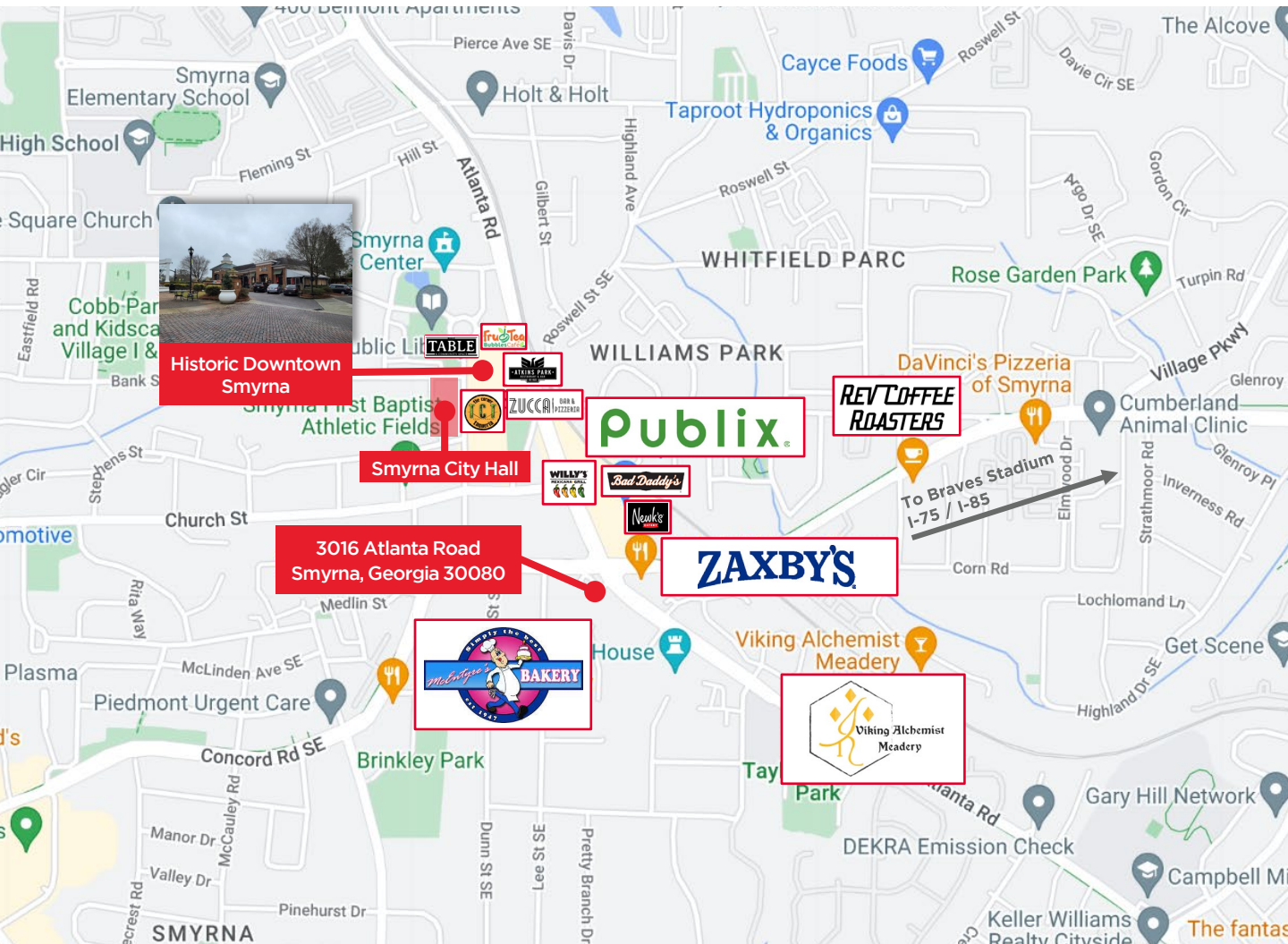


FOR DIRECT LEASE

**3016 Atlanta Road
Smyrna, Georgia 30080**



LOCATION MAP



For more information, please contact:

BORIS GARBUZ

Director

Brokerage Services

+1 404 682 3418

boris.garbuz@cushwake.com

1180 Peachtree Street NE, Suite 3100

Atlanta, GA 30309

+1 404 875 1000

cushmanwakefield.com

©2023 Cushman & Wakefield. All rights reserved. The information contained in this communication is strictly confidential. This information has been obtained from sources believed to be reliable but has not been verified. NO WARRANTY OR REPRESENTATION, EXPRESS OR IMPLIED, IS MADE AS TO THE CONDITION OF THE PROPERTY (OR PROPERTIES) REFERENCED HEREIN OR AS TO THE ACCURACY OR COMPLETENESS OF THE INFORMATION CONTAINED HEREIN, AND SAME IS SUBMITTED SUBJECT TO ERRORS, OMISSIONS, CHANGE OF PRICE, RENTAL OR OTHER CONDITIONS, WITHDRAWAL WITHOUT NOTICE, AND TO ANY SPECIAL LISTING CONDITIONS IMPOSED BY THE PROPERTY OWNER(S). ANY PROJECTIONS, OPINIONS OR ESTIMATES ARE SUBJECT TO UNCERTAINTY AND DO NOT SIGNIFY CURRENT OR FUTURE PROPERTY PERFORMANCE.