



4,550 SF FOR SUBLEASE

# RED HAWK COURT

9292 WEST BARNES DRIVE  
BOISE, IDAHO 83709

FOR MORE INFORMATION, CONTACT:

**JENNIFER MCENTEE**

Senior Director  
Office | Capital Markets  
+1 208 287 9495  
jennifer.mcentee@cushwake.com

**BREE WELLS**

Director  
Office | Capital Markets  
+1 208 287 9492  
bree.wells@cushwake.com

**BRAYDON TORRES**

Associate  
Office | Capital Markets  
+1 208 207 9485  
braydon.torres@cushwake.com



**CUSHMAN &  
WAKEFIELD**

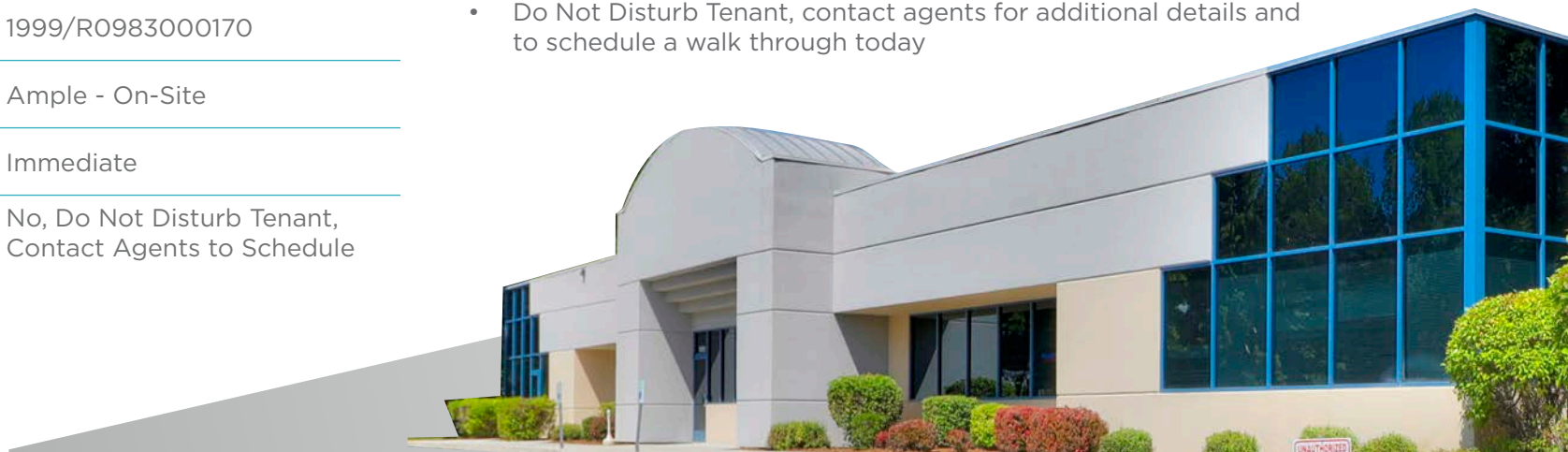
# PROPERTY HIGHLIGHTS



Sublease Rate:	\$18.00/SF FSEJ
Available:	4,550 SF
Sublease Term:	Through 12/31/2027
Building Size	13,820 SF Total
Lot Size:	1.22 Acres
Zoning:	City of Boise-L-O/D/DA
Built/Parcel #:	1999/R0983000170
Parking:	Ample - On-Site
Availability:	Immediate
LockBox:	No, Do Not Disturb Tenant, Contact Agents to Schedule

## LISTING FEATURES

- Red Hawk Court office space available in the Blackeagle Office Park in southwest Boise near the “Flying Y”
- Available space consists of dedicated entries, 18 private offices, conference room, large break room, and lobby
- Building offers common area entry, rest rooms, large windows, ample on-site parking, and easy access from both West Overland & South Maple Grove Roads
- Surrounding amenities include retailers, restaurants, banking, and other professional services
- Do Not Disturb Tenant, contact agents for additional details and to schedule a walk through today

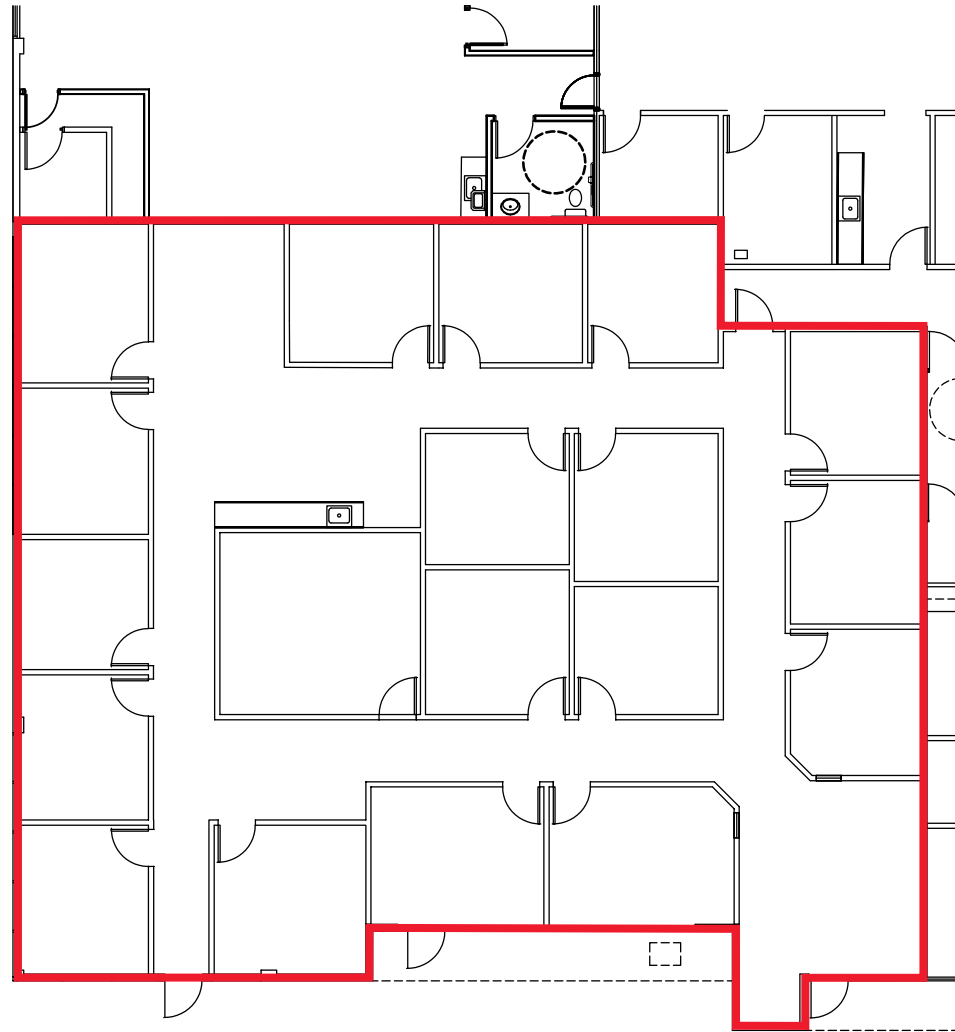


# FLOOR PLAN

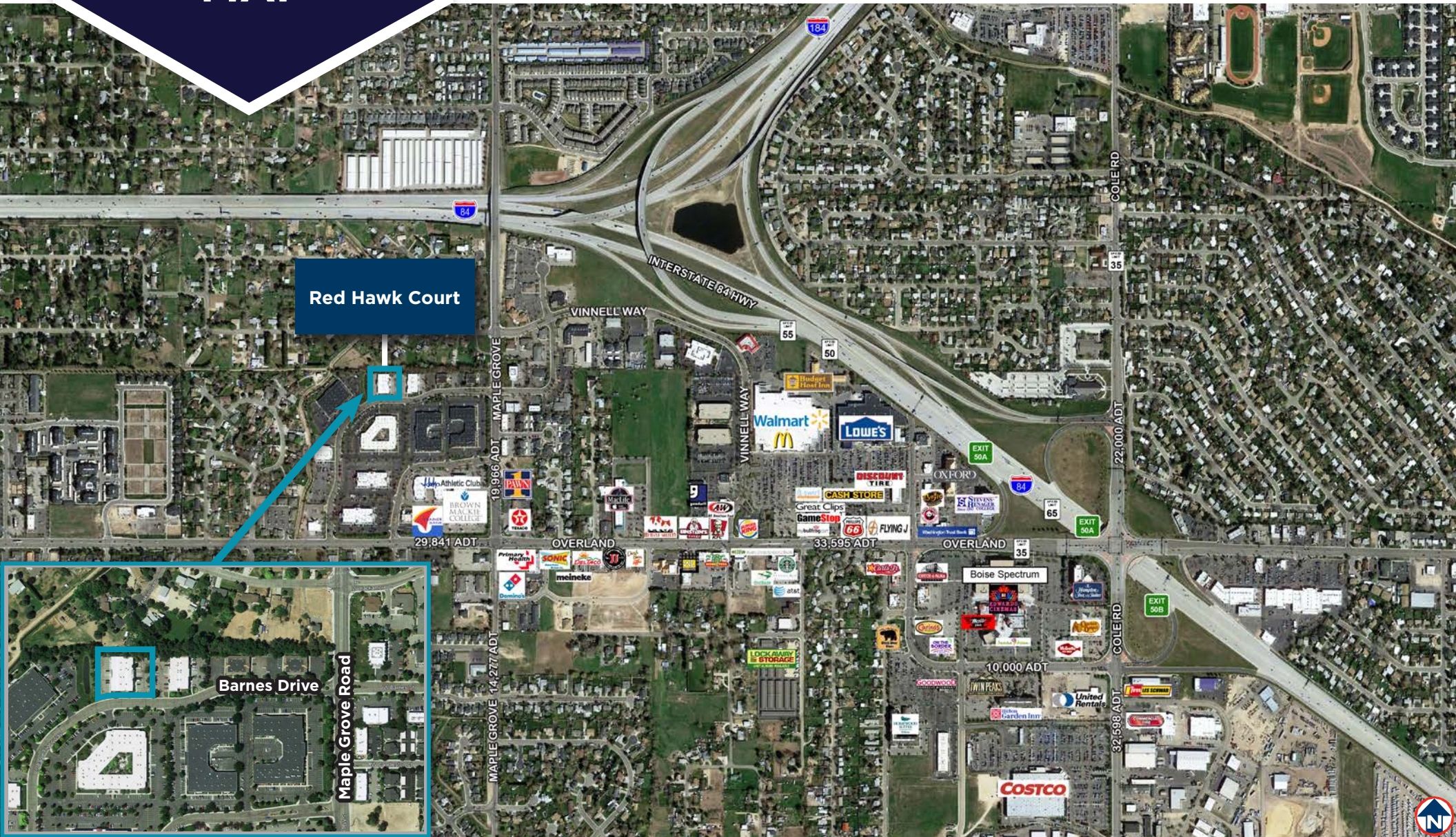
4,450 SF Available - Sublease Rate \$18.00/SF - FSEJ - Sublease Term Through 12/31/2027



Space consists of dedicated entries, 18 private offices, conference room, large break room, and lobby



# AMENITIES MAP





**FOR MORE INFORMATION, CONTACT:**

**JENNIFER MCENTEE**

Senior Director  
Office | Capital Markets  
+1 208 287 9495  
jennifer.mcentee@cushwake.com

**BREE WELLS**

Director  
Office | Capital Markets  
+1 208 287 9492  
bree.wells@cushwake.com

**BRAYDON TORRES**

Associate  
Office | Capital Markets  
+1 208 207 9485  
braydon.torres@cushwake.com

©2024 Cushman & Wakefield. All rights reserved. The information contained in this communication is strictly confidential. This information has been obtained from sources believed to be reliable but has not been verified. NO WARRANTY OR REPRESENTATION, EXPRESS OR IMPLIED, IS MADE AS TO THE CONDITION OF THE PROPERTY (OR PROPERTIES) REFERENCED HEREIN OR AS TO THE ACCURACY OR COMPLETENESS OF THE INFORMATION CONTAINED HEREIN, AND SAME IS SUBMITTED SUBJECT TO ERRORS, OMISSIONS, CHANGE OF PRICE, RENTAL OR OTHER CONDITIONS, WITHDRAWAL WITHOUT NOTICE, AND TO ANY SPECIAL LISTING CONDITIONS IMPOSED BY THE PROPERTY OWNER(S). ANY PROJECTIONS, OPINIONS OR ESTIMATES ARE SUBJECT TO UNCERTAINTY AND DO NOT SIGNIFY CURRENT OR FUTURE PROPERTY PERFORMANCE.