

FOR SUBLEASE  
**EUROPA PLACE**  
101 Europa Place Drive, Chapel Hill, NC

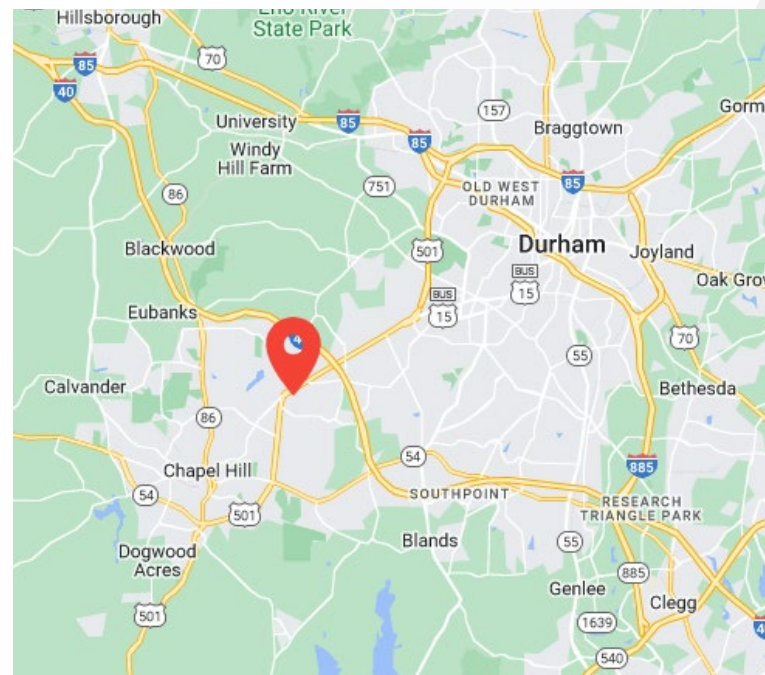


## Suite 200 – 19,184 RSF Available

### Property Highlights

Europa Place is a two-story office building located off Durham-Chapel Hill Blvd.

- Available immediately
- Ability to subdivide down to approximately 14,000 SF
- Furniture, Fixtures and Equipment available
- Rental rate is negotiable
- Master lease expires 9/30/2025
- Building amenities include a fitness center and self-service café
- A variety of dining and retail options nearby including Kipos Greek Taverna, Whole Foods, CAVA, CVS and Starbucks.



### Contact

BEN LITKE  
Senior Director  
+1 919 439 5145  
[ben.litke@cushwake.com](mailto:ben.litke@cushwake.com)

KRISTINE SMITH  
Associate  
+1 919 645 3590  
[Kristine.smith@cushwake.com](mailto:Kristine.smith@cushwake.com)

FOR SUBLEASE  
101 Europa Place | Chapel Hill, NC

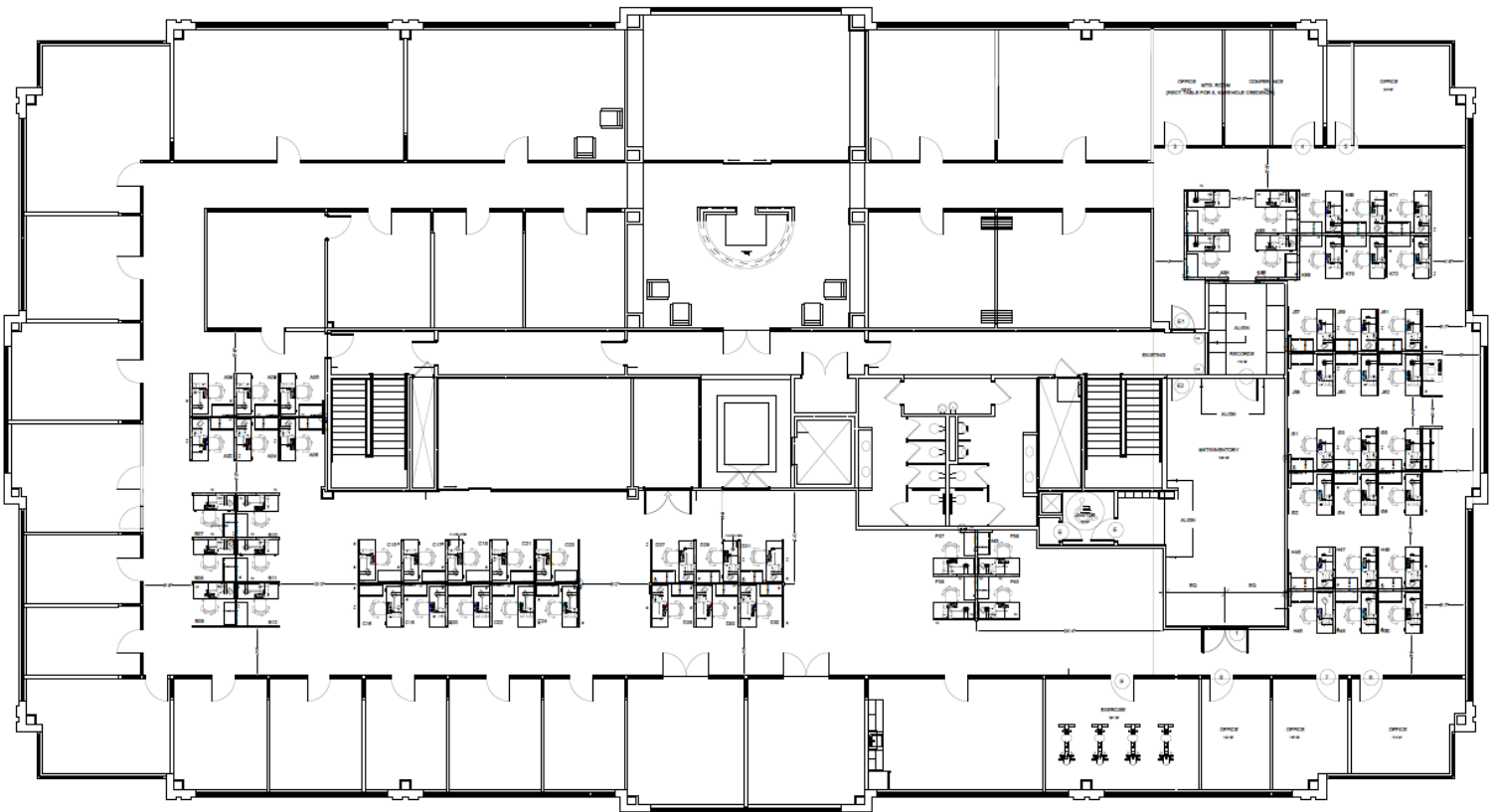


## Contact

BEN LITKE  
Senior Director  
+1 919 439 5145  
[ben.litke@cushwake.com](mailto:ben.litke@cushwake.com)

KRISTINE SMITH  
Associate  
+1 919 645 3590  
[Kristine.smith@cushwake.com](mailto:Kristine.smith@cushwake.com)

## Suite 200 – 19,184 RSF



2 Executive Offices	60 Workstations
18 Offices	1 Break Room
5 Huddle Rooms	1 Storage Area
3 Conference Rooms	1 Fitness Room

### Contact

BEN LITKE  
Senior Director  
+1 919 439 5145  
[ben.litke@cushwake.com](mailto:ben.litke@cushwake.com)

KRISTINE SMITH  
Associate  
+1 919 645 3590  
[Kristine.smith@cushwake.com](mailto:Kristine.smith@cushwake.com)