

SUBLEASE RATE

\$3.25/SF + E

HIGH PROFILE FULLY FURNISHED SUBLEASE OPPORTUNITY

1200 PROSPECT STREET

2,105 RSF | SUITE 575



 CUSHMAN &
WAKEFIELD

FOR SUBLEASE

1200 PROSPECT ST

2,105 RSF | SUITE 575

About the Building

Located on the prestigious Prospect Street of La Jolla Village, the La Jolla Financial building boasts sweeping ocean views and walkability to some of the finest restaurants and shopping.

- Walking distance to retail, award-winning restaurants, and boutique shopping
- Large terrace with dramatic ocean views
- Immediate access to La Jolla Cove
- On-Site health club
- Ample on-site underground parking (3.5/1,000 SF parking ratio)



90 SCORE ON
THE WALKABILITY SCALE



EXTENSIVE OCEAN VIEWS
IN THE HEART OF
DOWNTOWN LA JOLLA



PROPERTY MANAGEMENT
ON SITE

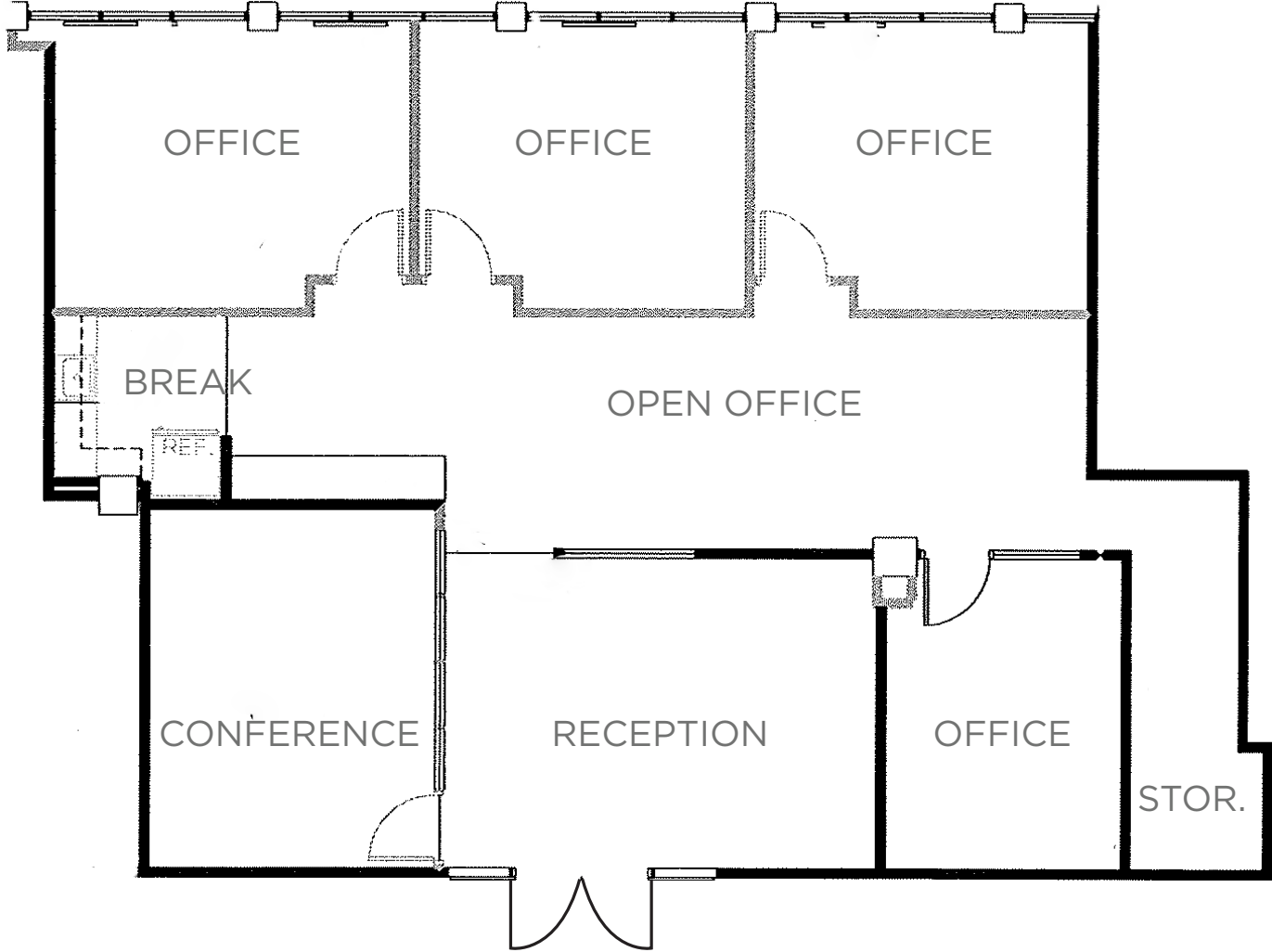
MITCH CLAWSON
Managing Director
+1 858 558 5655
mitch.clawson@cushwake.com
CA License 01872011

Sublease Highlights

- Truly “plug and play” Class A office solution
- Expansive glass line offering an abundance of natural light and Village views
- Double door entry
- 4 private offices, conference room, open office, break, and storage area
- **MASTER LEASE THROUGH APRIL 2028**



FLOOR PLAN



NEARBY AMENITIES



MITCH CLAWSON
Managing Director
+1 858 558 5655
mitch.clawson@cushwake.com
CA License 01872011

FOR SUBLEASE

1200 PROSPECT ST

2,105 RSF | SUITE 575



©2024 Cushman & Wakefield. All rights reserved. The information contained in this communication is strictly confidential. This information has been obtained from sources believed to be reliable but has not been verified. NO WARRANTY OR REPRESENTATION, EXPRESS OR IMPLIED, IS MADE AS TO THE CONDITION OF THE PROPERTY (OR PROPERTIES) REFERENCED HEREIN OR AS TO THE ACCURACY OR COMPLETENESS OF THE INFORMATION CONTAINED HEREIN, AND SAME IS SUBMITTED SUBJECT TO ERRORS, OMISSIONS, CHANGE OF PRICE, RENTAL OR OTHER CONDITIONS, WITHDRAWAL WITHOUT NOTICE, AND TO ANY SPECIAL LISTING CONDITIONS IMPOSED BY THE PROPERTY OWNER(S). ANY PROJECTIONS, OPINIONS OR ESTIMATES ARE SUBJECT TO UNCERTAINTY AND DO NOT SIGNIFY CURRENT OR FUTURE PROPERTY PERFORMANCE.