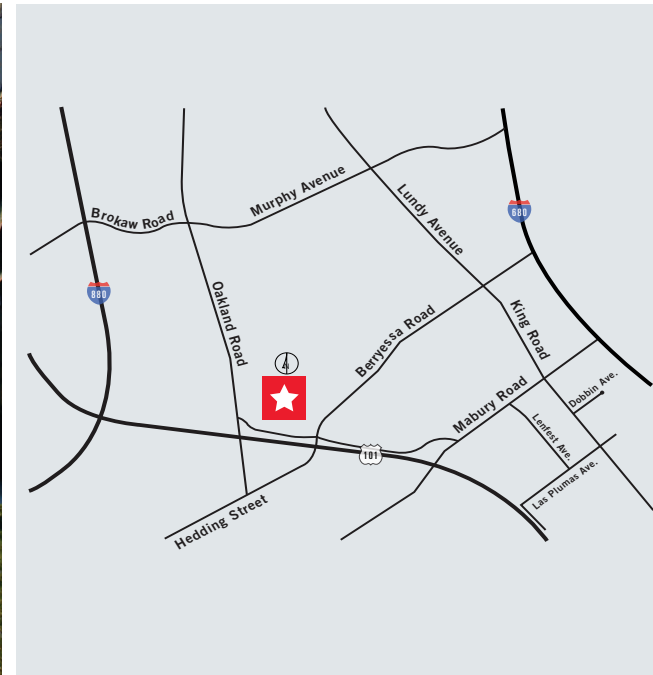




For Lease

Freeway Business Park

761 Mabury Road, San Jose, California



FOR LEASE

761 MABURY

- Unit 95: ±1,000 SF

Project Highlights

- Great Access to Highways 101 & 880
- 2.65/1000 Parking
- 100 Amps of Power
- Expansion Opportunity within Project

For more information, contact:

Jon DeCoite
Managing Director
P +1 408 615 3408
jon.decoite@cushwake.com
LIC #01471300

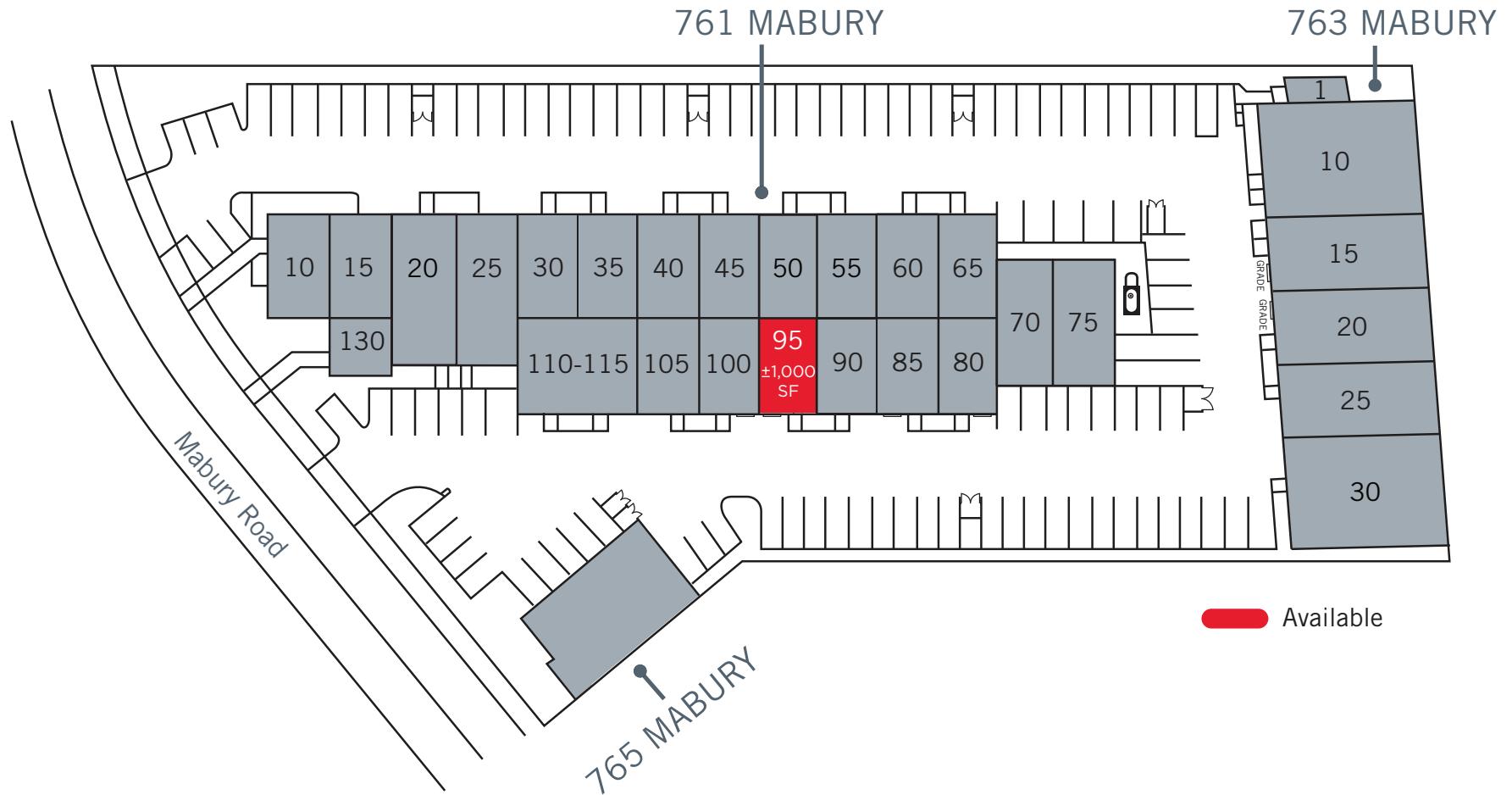
300 Santana Row, Fifth Floor
San Jose, California 95128
P +1 408 615 3400

www.cushmanwakefield.com



For Lease Freeway Business Park

761 Mabury Road, San Jose, California



For more information, please contact:

Jon DeCoite
Managing Director
P +1 408 615 3408
jon.decoite@cushwake.com
LIC #01471300

300 Santana Row, Fifth Floor
San Jose, California 95128
P +1 408 615 3400

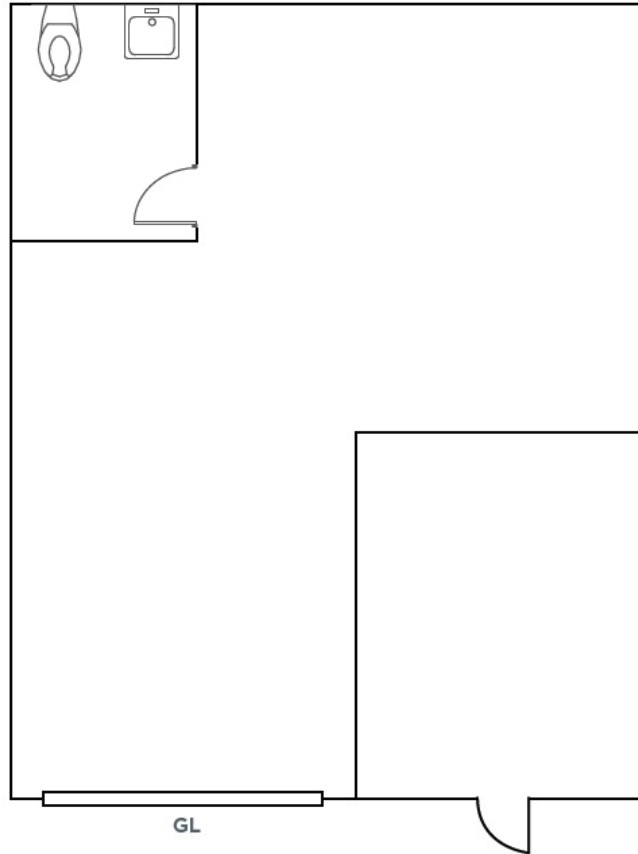
www.cushmanwakefield.com



For Lease
Freeway Business Park
761 Mabury Road, San Jose, California

FLOOR PLAN

- Unit 95: ±1,000 SF



For more information, please contact:

Jon DeCoite
Managing Director
P +1 408 615 3408
jon.decoite@cushwake.com
LIC #01471300

300 Santana Row, Fifth Floor
San Jose, California 95128
P +1 408 615 3400

www.cushmanwakefield.com