

SUBLEASE



CUSHMAN &
WAKEFIELD



M FINANCIAL PLAZA

1125 NW COUCH STREET
PORTLAND, OR 97209

[CLICK HERE FOR VIRTUAL TOUR!](#)

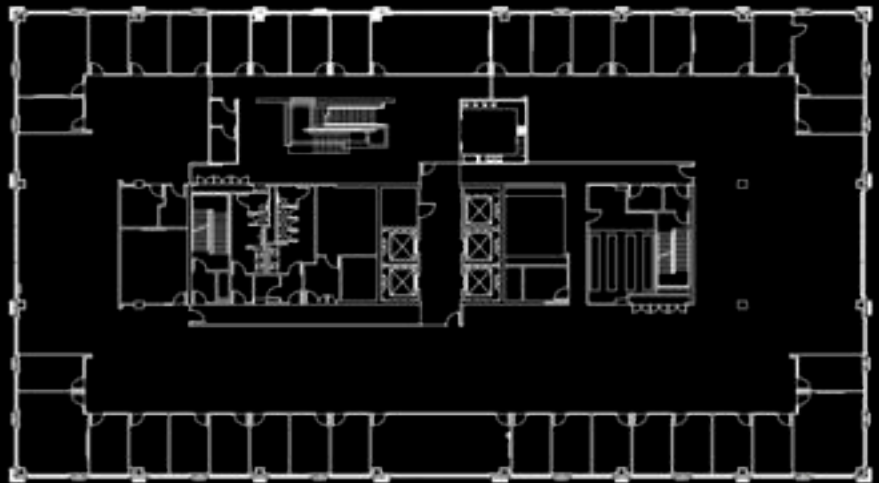


PREMIER SPACE IN PORTLAND CBD

All the amenities you expect and more, in the heart of Portland's Central Business District.

BUILDING HIGHLIGHTS

- State-of-the-art fitness center, showers and locker rooms
- Tech-forward conference room for 20 for all tenants' use
- Brand new outdoor terrace with lots of greenery and comfortable collaboration space
- Modern touch and feel through the suite and building
- Secured bike parking
- LEED Certified
- 2/1,000 Parking Ratio available
- 24-hour security on-site



EIGHTH FLOOR



LARGE CONF. ROOM



EXTERIOR OFFICES

SUITE HIGHLIGHTS

- Suite 800 | 20,407 RSF
- Call for Rates
- Sublease available through January 31, 2027, or potentially through November 2031
- Includes private mother's room, production/copier space, kitchen break room, two additional storage rooms with lock access

07
CONF. ROOMS

31
PRIVATE OFFICES

70
CUBICLES



**CUSHMAN &
WAKEFIELD**



©2023 Cushman & Wakefield. All rights reserved. The information contained in this communication is strictly confidential. This information has been obtained from sources believed to be reliable but has not been verified. NO WARRANTY OR REPRESENTATION, EXPRESS OR IMPLIED, IS MADE AS TO THE CONDITION OF THE PROPERTY (OR PROPERTIES) REFERENCED HEREIN OR AS TO THE ACCURACY OR COMPLETENESS OF THE INFORMATION CONTAINED HEREIN, AND SAME IS SUBMITTED SUBJECT TO ERRORS, OMISSIONS, CHANGE OF PRICE, RENTAL OR OTHER CONDITIONS, WITHDRAWAL WITHOUT NOTICE, AND TO ANY SPECIAL LISTING CONDITIONS IMPOSED BY THE PROPERTY OWNER(S). ANY PROJECTIONS, OPINIONS OR ESTIMATES ARE SUBJECT TO UNCERTAINTY AND DO NOT SIGNIFY CURRENT OR FUTURE PROPERTY PERFORMANCE.

DOUG DEURWAARDER
200 SW Market St, Suite 200
Portland, OR 97201
doug.deurwaarder@cushwake.com
+1 503 279 1752
cushmanwakefield.com