



LEHI, UTAH



**SUBLEASE AVAILABLE | BUILDING 2  
BAYS 9, 10 & 11 | 10,061-29,724 SF**



**CUSHMAN &  
WAKEFIELD**



The Holbrook Industrial Park, located in Lehi, is a new project consisting of three warehouses totaling 332,832 SF.

The Park has direct access to the new Mountain View Coordinator, Redwood Road and is minutes from I-15.

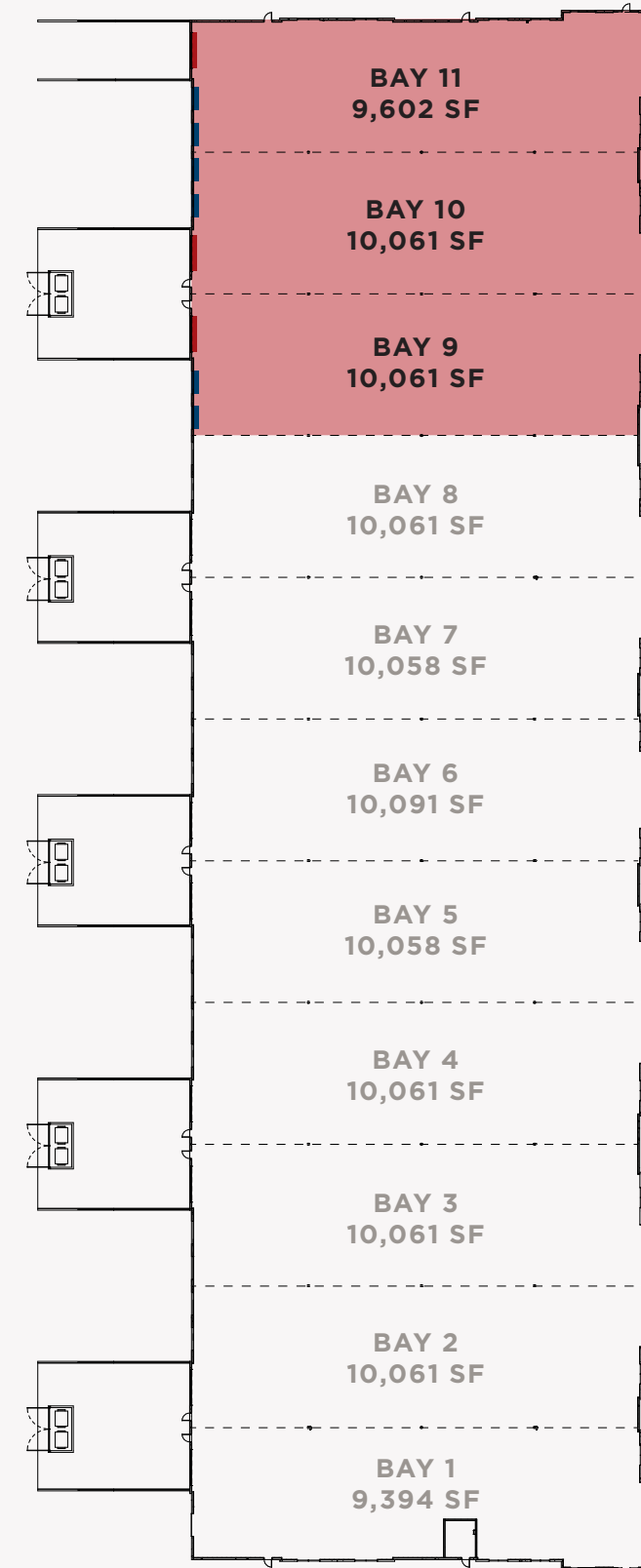
Click the below pin for directions to Holbrook Industrial Park.



■ Available

# Building 2

5025 West Hudson Way | Lehi, Utah



Building Size  
**109,572 SF**

Available  
**10,061-29,724 SF**

Office  
**1,000 SF**

Divisible  
**10,061 SF**

■ DH Doors  
**5 Dock High**

■ GL Doors  
**3 Ground Level**

Clear Height  
**32'**

Fire Suppression  
**ESFR**

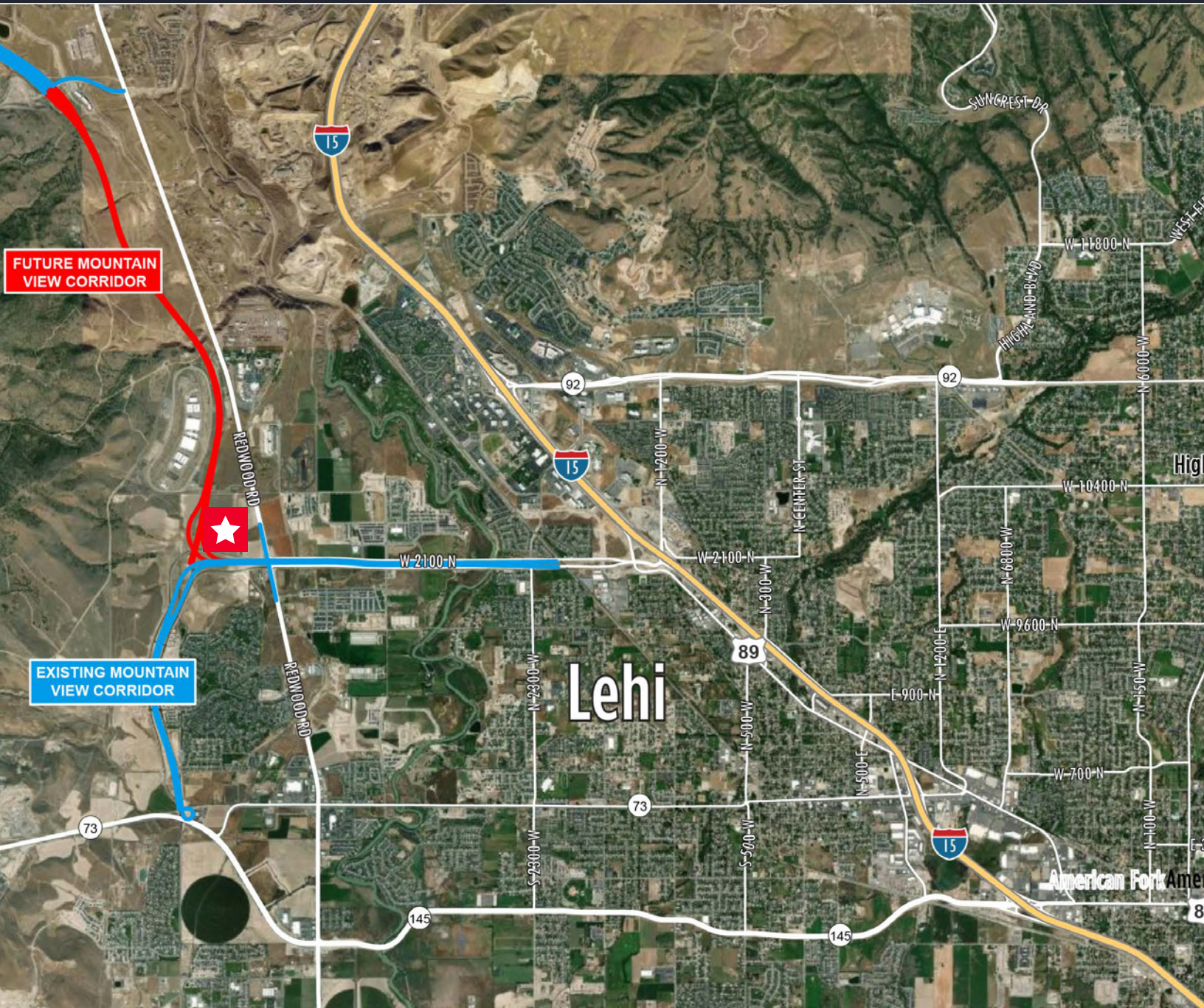
Column Spacing  
**56' x 44'.8"**

Parking  
**1.75/1,000**

Power  
**277/480 Volt,  
3-Phase**

Zoning  
**PC-FLEX**

Lease Rate  
**\$0.95/SF, NNN**



## CONTACT INFORMATION

### GINA MOORE

Director  
+1 801 303 5510  
gina.moore@cushwake.com

### TYSON FOWLER

Senior Associate  
+1 801 303 5413  
tyson.fowler@cushwake.com

170 South Main Street, Suite 1600  
Salt Lake City, UT 84101  
+1 801 322 2000  
cushmanwakefield.com