

**1,054 UP TO 11,466 SF**  
AVAILABLE FOR LEASE (WILL SUB-DIVIDE)

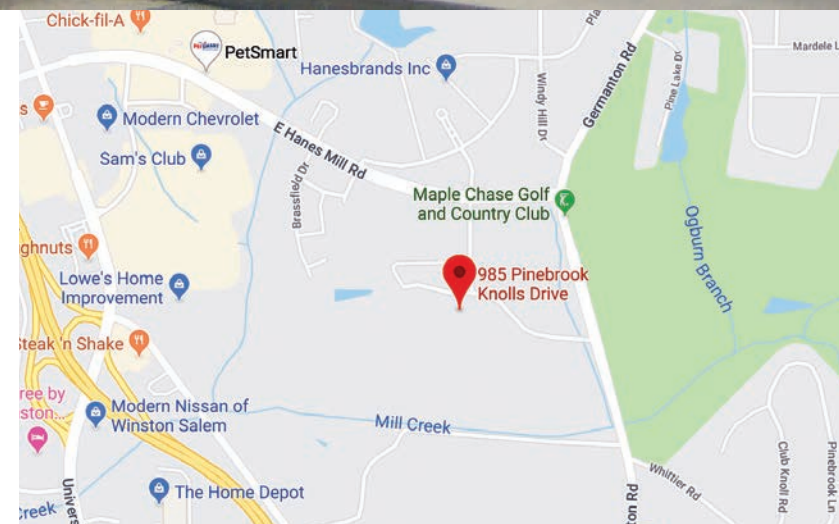
### Property Highlights

- **1,054 SF up to 11,466 SF Available for Lease**
- **Space can be sub-divided**
- Corporate campus setting located in Oak Summit Business Park
- Custom upfitting available
- Ample parking
- Ground-level loading door(s)
- 12' - 14' clear height
- Current configuration is mostly office, but can be converted back to flex with roll up doors if needed

**Bobby Finch**  
Executive Director  
+1 336 812 3303  
bobby.finch@cushwake.com

**Seth Constable**  
Senior Associate  
+1 336 885 7815  
seth.constable@cushwake.com

121-D Reynolda Village  
Winston-Salem, NC 27106 | USA  
Main +1 336 668 9999  
Fax +1 336 668 0888  
[cushmanwakefield.com](http://cushmanwakefield.com)

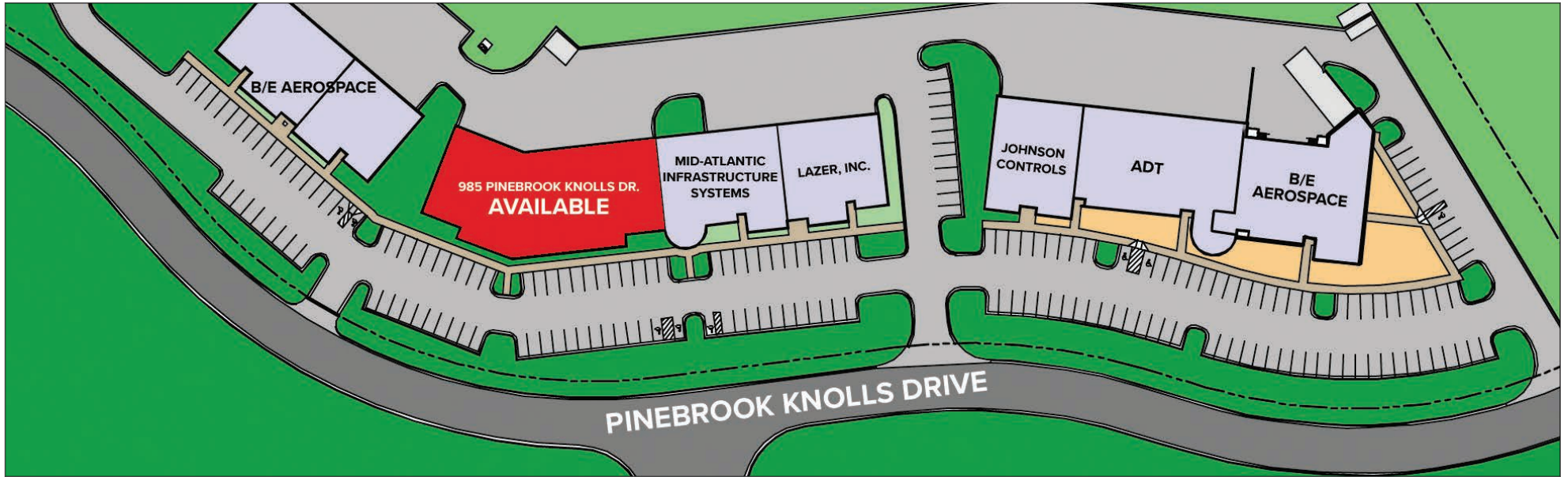




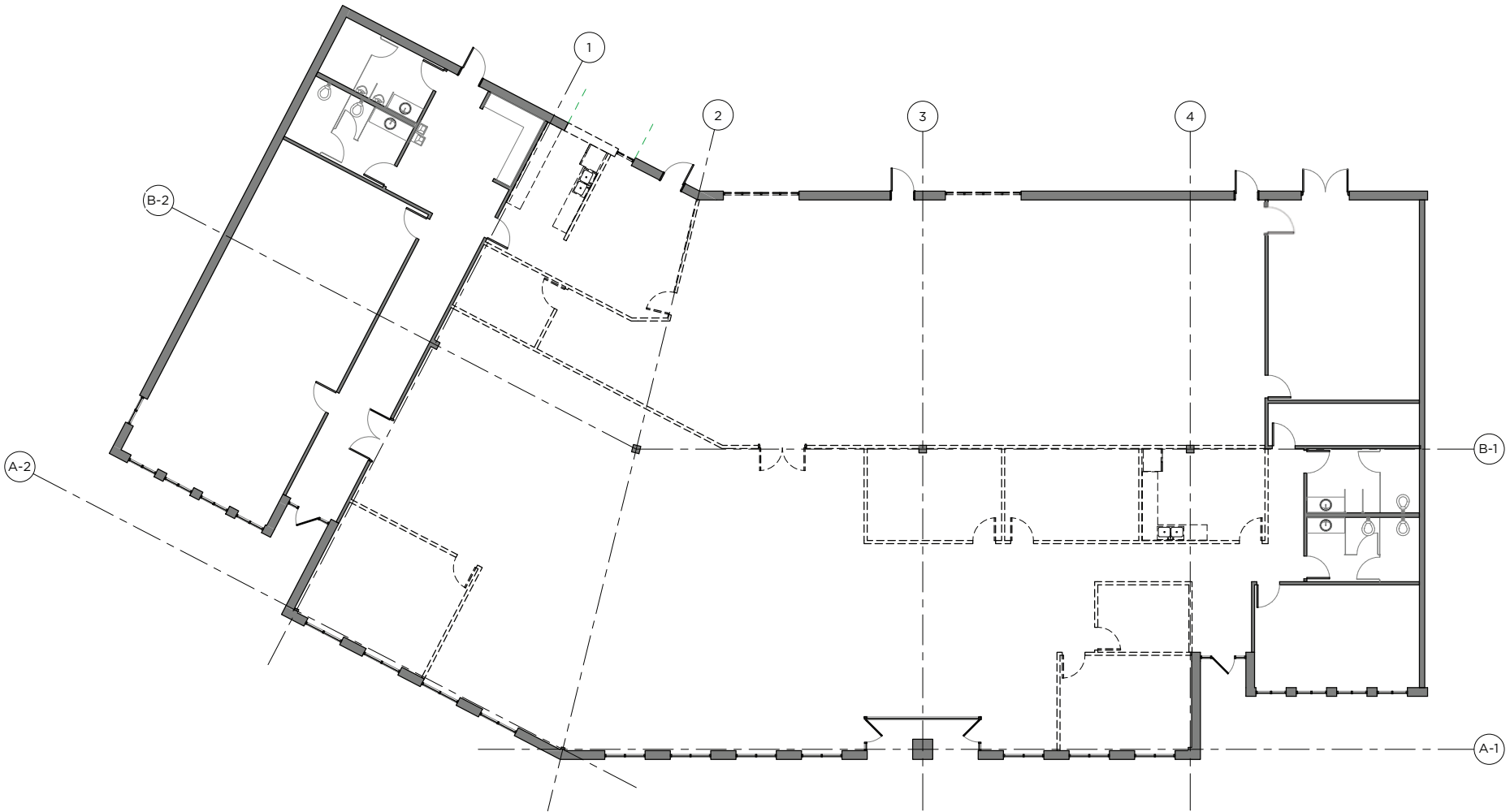
**Bobby Finch**  
Executive Director  
+1 336 812 3303  
bobby.finch@cushwake.com

**Seth Constable**  
Senior Associate  
+1 336 885 7815  
seth.constable@cushwake.com

121-D Reynolda Village  
Winston-Salem, NC 27106 | USA  
Main +1 336 668 9999  
Fax +1 336 668 0888  
[cushmanwakefield.com](http://cushmanwakefield.com)



**CURRENT FLOOR PLAN**



**Bobby Finch**  
Executive Director  
+1 336 812 3303  
bobby.finch@cushwake.com

**Seth Constable**  
Senior Associate  
+1 336 885 7815  
seth.constable@cushwake.com

121-D Reynolda Village  
Winston-Salem, NC 27106 | USA  
Main +1 336 668 9999  
Fax +1 336 668 0888  
**cushmanwakefield.com**

**TEST FIT EXAMPLE 1**



**Bobby Finch**  
Executive Director  
+1 336 812 3303  
bobby.finch@cushwake.com

**Seth Constable**  
Senior Associate  
+1 336 885 7815  
seth.constable@cushwake.com

121-D Reynolda Village  
Winston-Salem, NC 27106 | USA  
Main +1 336 668 9999  
Fax +1 336 668 0888  
**cushmanwakefield.com**

**TEST FIT EXAMPLE 2**



**Bobby Finch**  
Executive Director  
+1 336 812 3303  
bobby.finch@cushwake.com

**Seth Constable**  
Senior Associate  
+1 336 885 7815  
seth.constable@cushwake.com

121-D Reynolda Village  
Winston-Salem, NC 27106 | USA  
Main +1 336 668 9999  
Fax +1 336 668 0888  
**cushmanwakefield.com**