

3950 FABER PLACE DRIVE

North Charleston, SC



For more information, contact:

NICK TANANA
Senior Director
240 793 4580
nick.tanana@cushwake.com

BRADY DASHIELL
Senior Associate
443 655 4334
brady.dashiell@cushwake.com

1 Central Island Plaza
115 Central Island Street, Suite 175
Charleston, SC 29492
www.cushmanwakefield.com



**CUSHMAN &
WAKEFIELD**

3950 Faber Place is a four-story Class A office building located in the Executive Park at Faber Place. The property offers a large floor plate with private bathrooms, ample parking, and easy access to I-526/I-26.



FEATURES



Premier Class A Office Building / 86,733 RBA



Availability – 4th Floor | 4,159 - 21,358 SF
(Subdividable)



Easy Access from I-526 & I-26



Ample Parking | 4.4/1000 SF (96 spaces)



Private Bathrooms



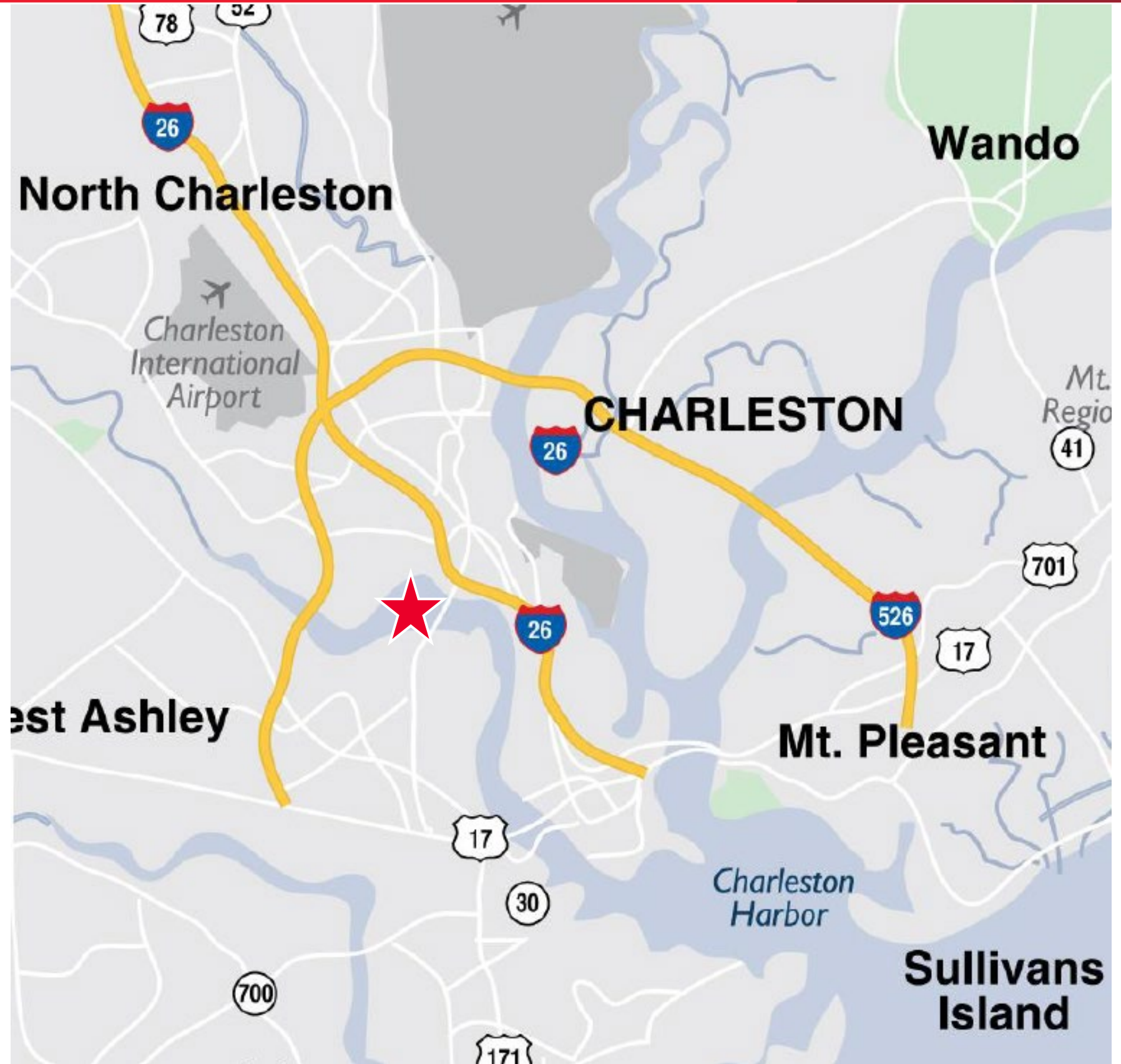
Secured Lobby



Private Balcony



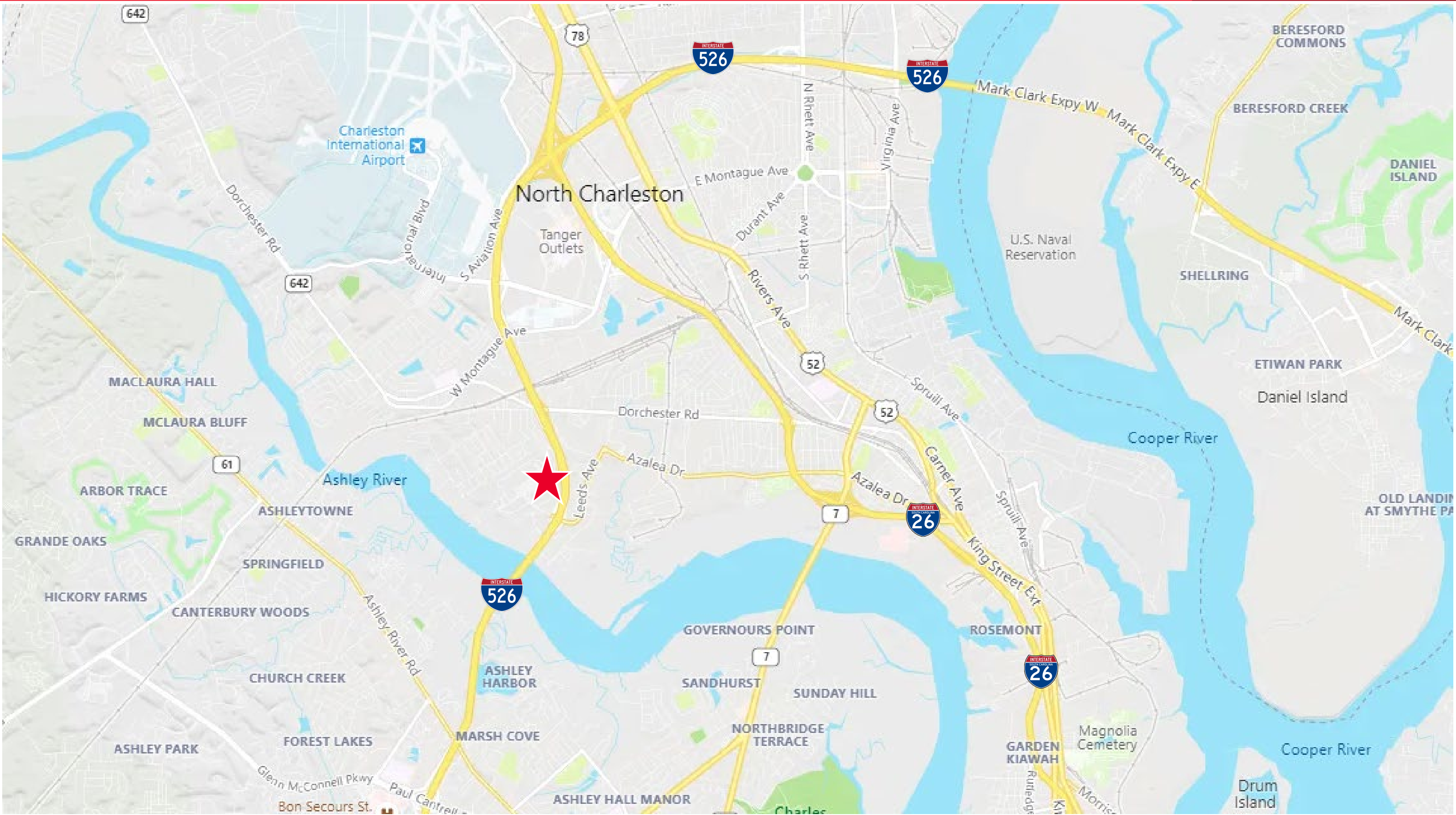
Call Broker for Lease Rate





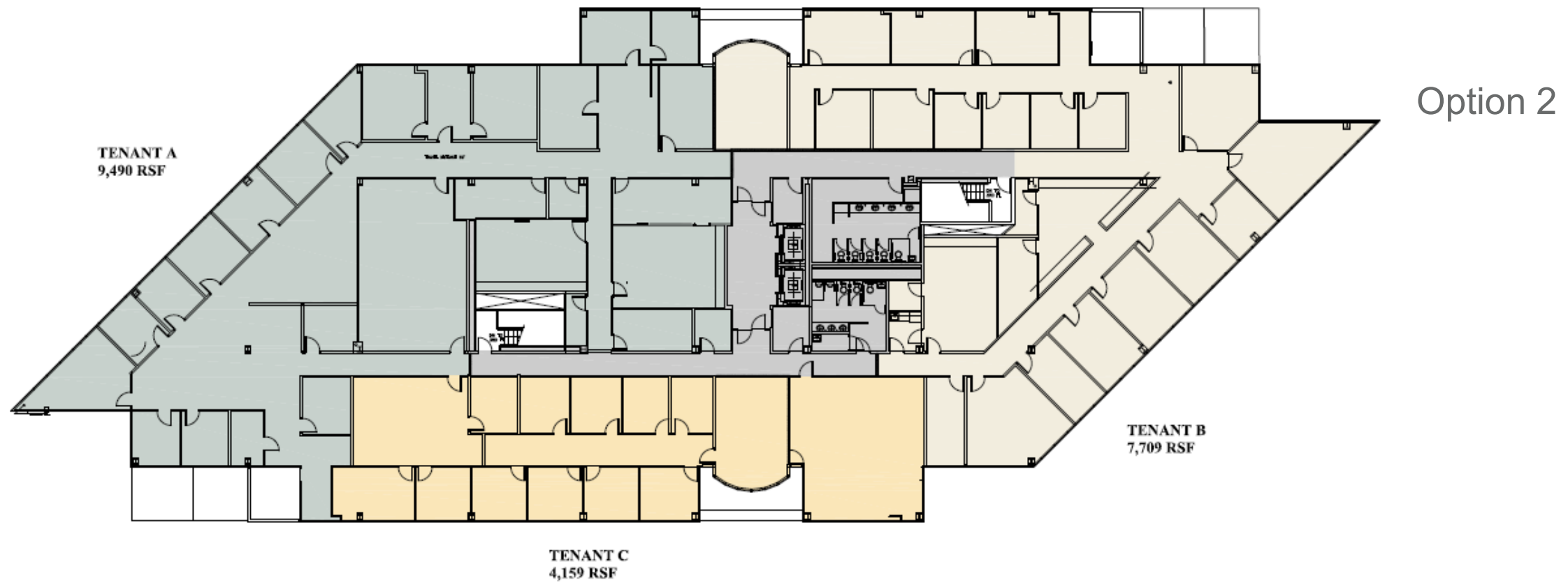
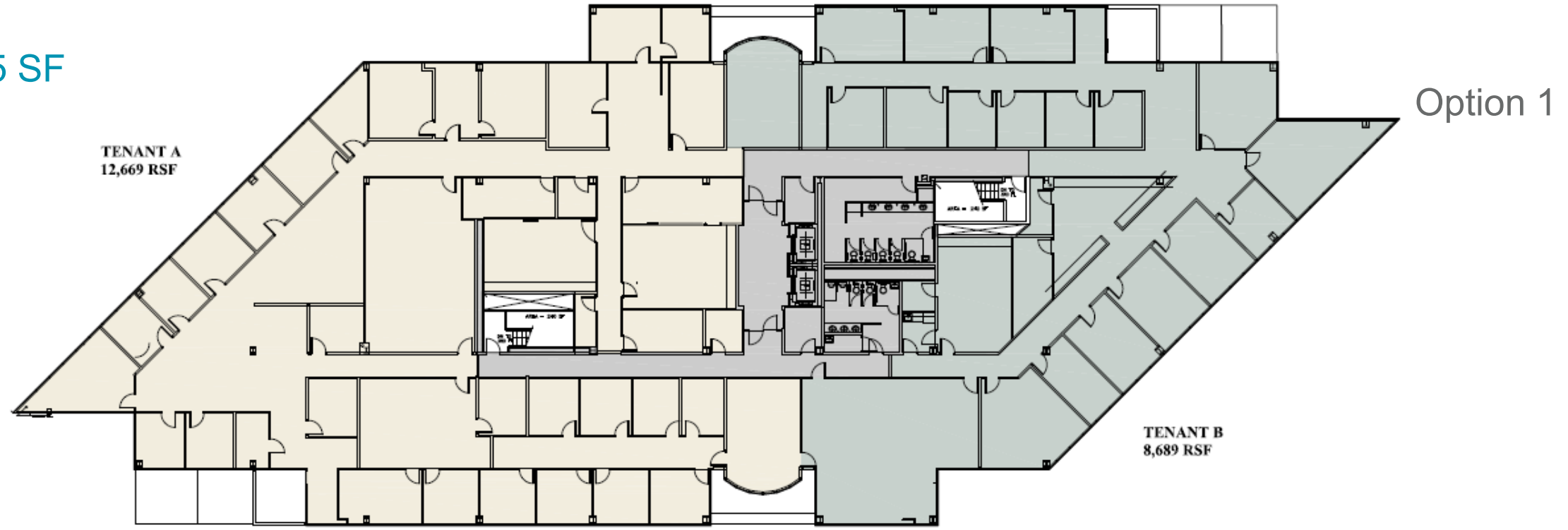
CLASS A OFFICE FOR LEASE

3950 FABER PLACE DRIVE | North Charleston, SC



4TH Floor

Available: 4,159 - 21,325 SF







For more information, contact:

NICK TANANA
Senior Director
240 793 4580
nick.tanana@cushwake.com

BRADY DASHIELL
Senior Associate
443 655 4334
brady.dashiell@cushwake.com

1 Central Island Plaza
115 Central Island Street, Suite 175
Charleston, SC 29492
www.cushmanwakefield.com

