



**SUITE 1B - 2,200 SF AVAILABLE**

**223 HEATLEY ST**

MONCKS CORNER, SC 29461

223 HEATLEY STREET  
MONCK'S CORNER, SC



## PROPERTY HIGHLIGHTS

Discover a prime opportunity for your business on Heatley Street in Moncks Corner, SC. This commercial office space offers the perfect blend of functionality and professionalism in a highly desirable location. Boasting 2,200 square feet of versatile workspace, this well-appointed office is equipped to meet the needs of a variety of businesses.

### PROPERTY FEATURES

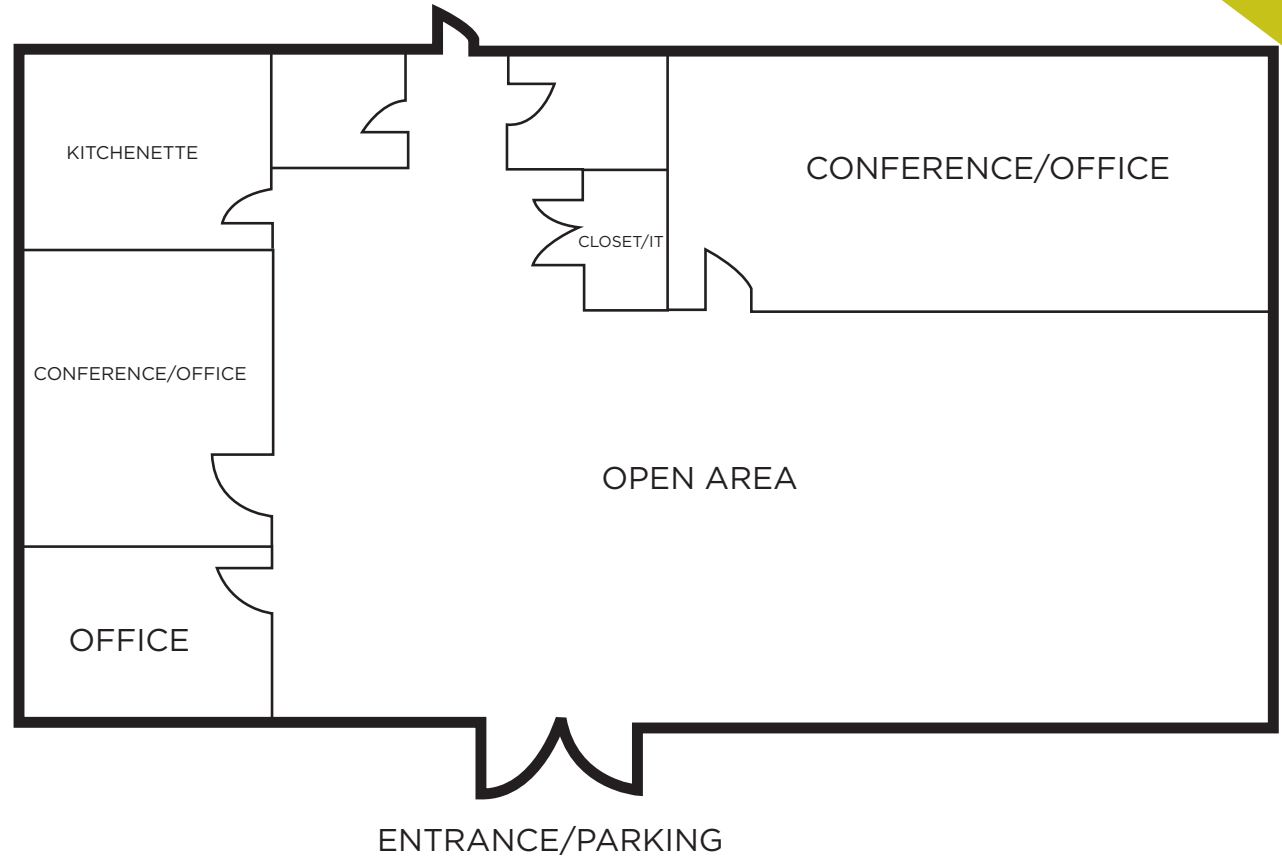
<b>Building Size:</b>	5,000 SF	<b>Building Class:</b>	B
<b>Space Available:</b>	Suite 1B 2,200 SF	<b>Primary Use:</b>	Office/Retail

### Comments:

- Move-In ready office/retail space available
- Free surface parking
- Building signage & monument signage available
- Contact broker for more information

# 223 HEATLEY STREET MONCK'S CORNER, SC

## FLOOR PLAN





**FOR MORE INFORMATION, CONTACT:**

**BRADY DASHIELL**

Senior Associate

843 724 0106

[brady.dashiell@cushwake.com](mailto:brady.dashiell@cushwake.com)

**NICK TANANA**

Senior Director

843 724 0109

[nick.tanana@cushwake.com](mailto:nick.tanana@cushwake.com)

