



FOR LEASE  
**BOYNTON COMMERCE CENTER**  
 2101 CORPORATE DRIVE, BOYNTON BEACH, FL

**3,300 SF FOR LEASE**



**Property Highlights**

- 22' clear ceiling height
- ESFR sprinkler system
- Approximately 70% office | 30% warehouse
- 2.4/1,000 parking ratio
- Mezzanine storage available
- Strategically located at the SWC of I-95 and Woolbright Road
- One grade level door
- Immediate access to I-95

Owned/Operated By:



For more information, please contact:

**Christopher Thomson, SIOR**  
**Executive Managing Director**  
 561 227 2019  
[christopher.thomson@cushwake.com](mailto:christopher.thomson@cushwake.com)

**Alex VanDresser**  
**Associate**  
 561 227 2027  
[alex.vandresser@cushwake.com](mailto:alex.vandresser@cushwake.com)

225 NE Mizner Boulevard, Suite 300  
 Boca Raton, FL 33432  
 phone: +1 561 227 2020

[cushmanwakefield.com](http://cushmanwakefield.com)

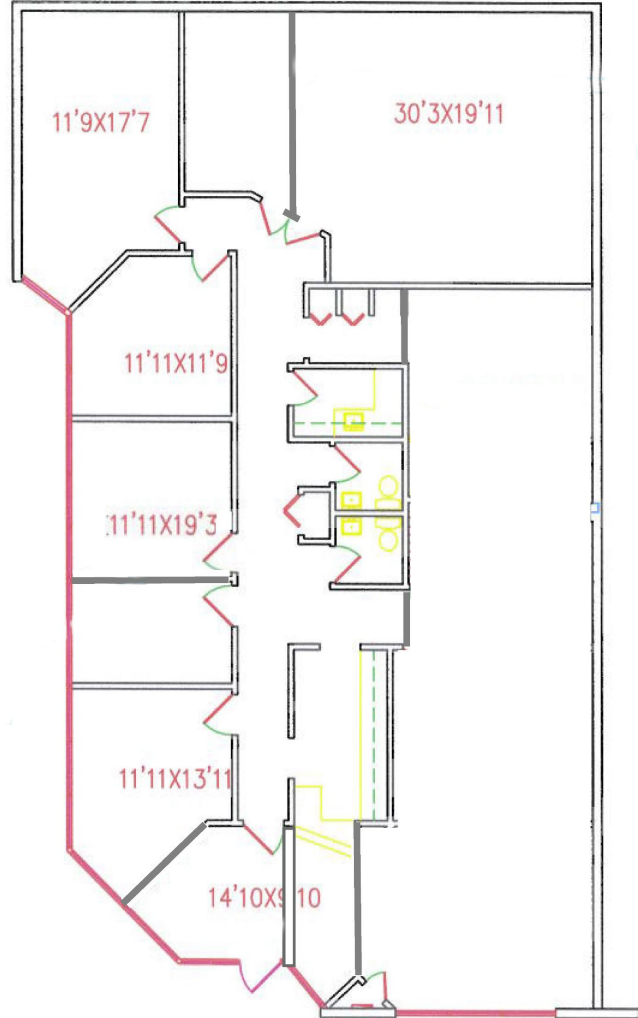
**BUILDING FEATURES**

PREMISES	Suite 2101: 3,300 SF
LEASE RATE	\$12.00 NNN + \$4.24 Exp.



FOR LEASE  
**BOYNTON COMMERCE CENTER**  
2101 CORPORATE DRIVE, BOYNTON BEACH, FL

Owned/Operated By:



For more information, contact:

**Christopher Thomson**, SIOR  
Executive Managing Director  
561 227 2019  
[christopher.thomson@cushwake.com](mailto:christopher.thomson@cushwake.com)

**Alex VanDresser**  
Associate  
561 227 2027  
[alex.vandresser@cushwake.com](mailto:alex.vandresser@cushwake.com)

225 NE Mizner Boulevard, Suite 300  
Boca Raton, FL 33432  
phone: +1 561 227 2020

[cushmanwakefield.com](http://cushmanwakefield.com)

