

FOR LEASE
36,501 SF



190 CARPENTER AVE
WHEELING, IL



ERIC FISCHER
Executive Managing Director
+1 847 720 1369
eric.fischer@cushwake.com

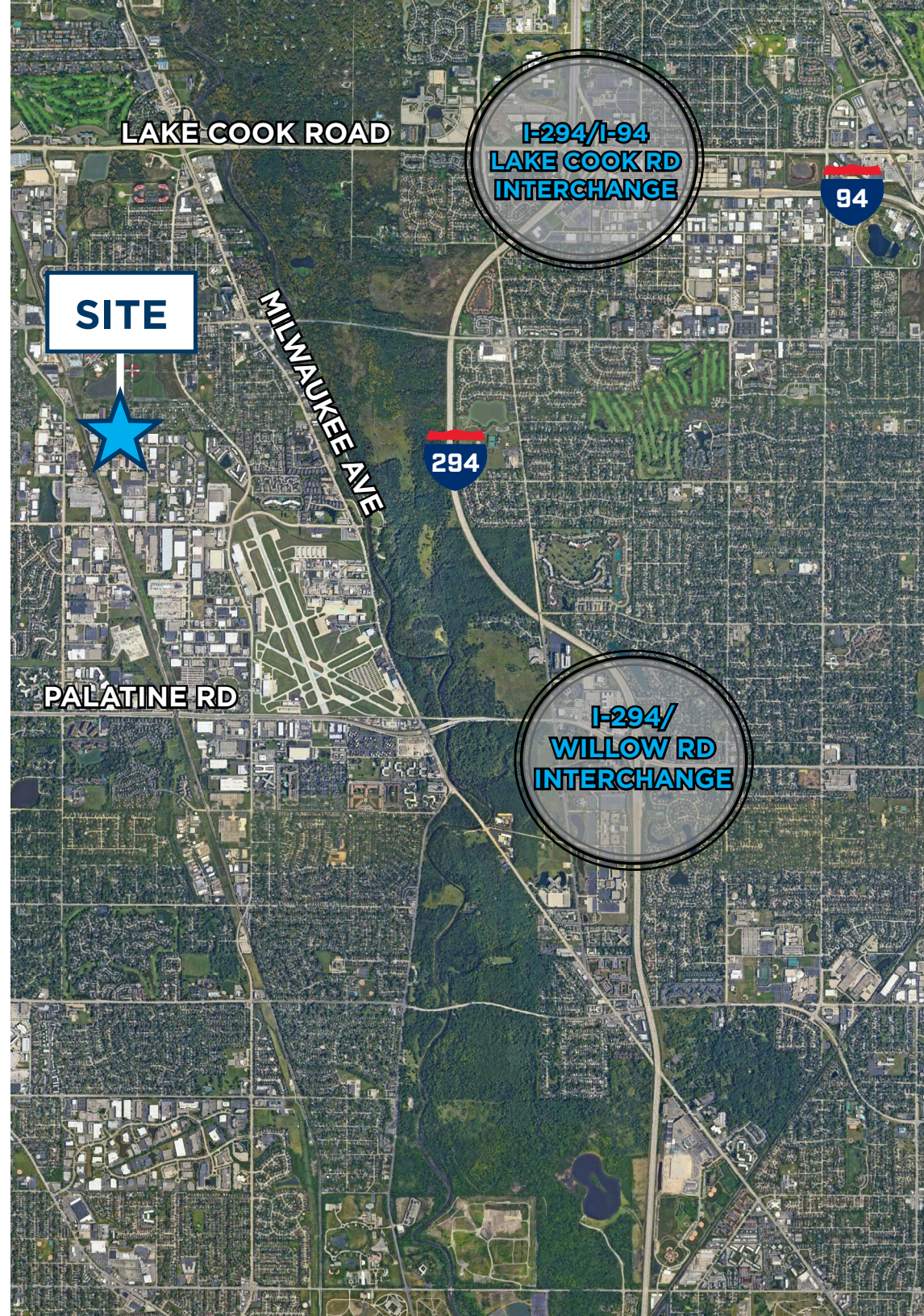
MARC SAMUELS
Director
+1 847 720 1368
marc.samuels@cushwake.com

STEVE STONE
Managing Director
+1 847 720 1364
steve.stone@cushwake.com

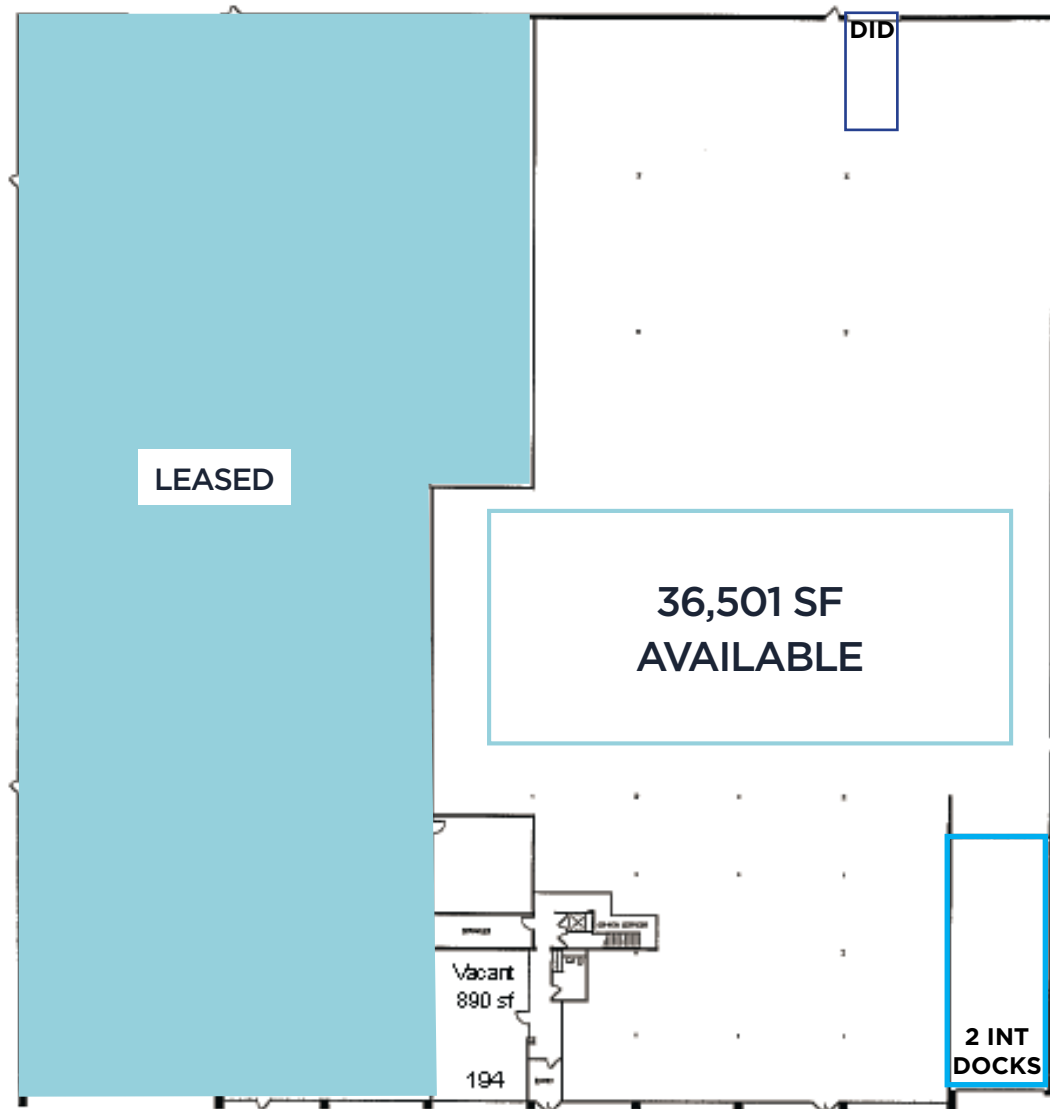
GABRIEL STRAUSS
Associate
+1 847 518 3226
gabriel.strauss@cushwake.com

PROPERTY HIGHLIGHTS

BUILDING SIZE:	78,449 SF
SPACE AVAILABLE:	36,501 SF
OFFICE AREA:	1,900 SF (1ST FLOOR) & 1,364 SF (2ND FLOOR, NOT INCLUDED IN TOTAL SPACE AVAILABLE)
CLEAR HEIGHT:	22'
LOADING:	2 INTERIOR, 1 DRIVE-IN-DOOR
POWER:	3-PHASE 2,500 AMPS @ 120/280V 1,600 AMPS @ 480V 600 AMPS @240V
PARKING:	125+ CARS



SITE PLAN



CONTACT US:

ERIC FISCHER
Executive Managing Director
+1 847 720 1369
eric.fischer@cushwake.com

MARC SAMUELS
Director
+1 847 720 1368
marc.samuels@cushwake.com

STEVE STONE
Managing Director
+1 847 720 1364
steve.stone@cushwake.com

GABRIEL STRAUSS
Associate
+1 847 518 3226
gabriel.strauss@cushwake.com



CONTACT INFORMATION

ERIC FISCHER

Executive Managing Director
+1 847 720 1369
eric.fischer@cushwake.com

MARC SAMUELS

Director
+1 847 720 1368
marc.samuels@cushwake.com

STEVE STONE

Managing Director
+1 847 720 1364
steve.stone@cushwake.com

GABRIEL STRAUSS

Associate
+1 847 518 3226
gabriel.strauss@cushwake.com

