

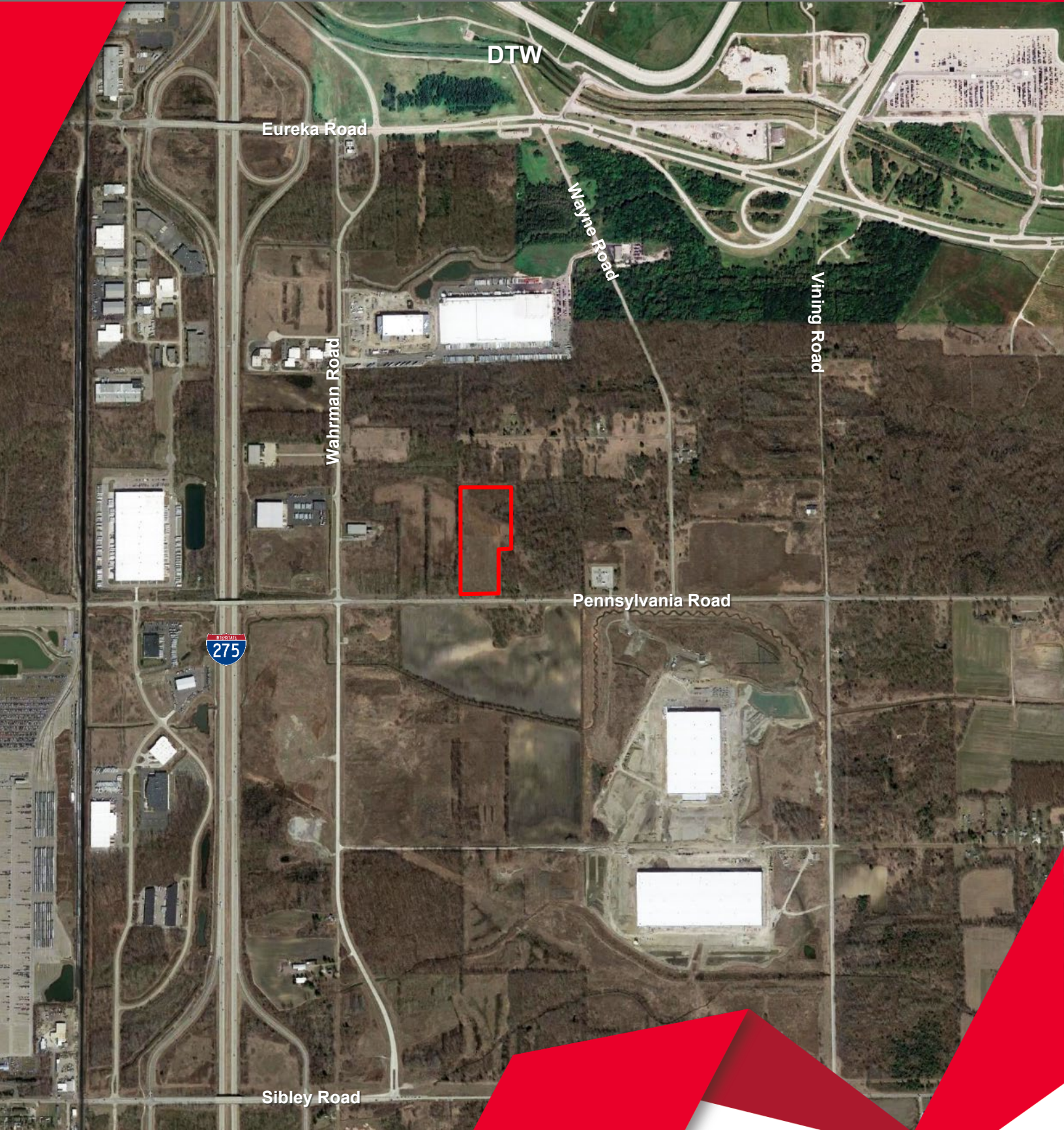
# VACANT INDUSTRIAL LAND NEAR DTW



PENNSYLVANIA ROAD, ROMULUS, MI

For Sale / 17.3 Acres / \$2,076,000 (\$120,000/acre)

WHAT'S  
NEXT



**Tony Avendt** / Managing Director / [tony.avendt@cushwake.com](mailto:tony.avendt@cushwake.com) / +1 248 358 6115

**Conner Salsberry** / Senior Associate / [conner.salsberry@cushwake.com](mailto:conner.salsberry@cushwake.com) / +1 248 358 6114

[CUSHMANWAKEFIELD.COM](http://CUSHMANWAKEFIELD.COM)

# VACANT INDUSTRIAL LAND NEAR DTW

PENNSYLVANIA ROAD, ROMULUS, MI

## SITE DESCRIPTION

17.3 Acres (753,588 SF)

Dimensions: 1,269' deep, 658' wide, 481' frontage

## SALE PRICE

\$2,076,000 (\$120,000/acre)

## ZONING

M2 General Industrial

## UTILITIES

- 12' water main on the North side of Pennsylvania Road
- Sanitary sewer line on the corner of Pennsylvania and Wahrman Roads

## COMMENTS

- Land assemblage possible
- Clear, flat topography

## NEARBY PROJECTS

- Amazon Sort Center (DTW 9)
- Amazon Fulfillment Center (DTW 3)
- Kroger Distribution Center
- Penske Logistics
- Pinnacle Logistics Park

## NEARBY I-275 ENTRANCES/EXITS

- 1.5 miles from the Sibley Road exit
- 1.4 miles from the Eureka Road exit
- 1.5 miles from the Vining Road exit

