

CENTURY 21
Gavish Real Estate
775-751-4088

 Intermountain
Healthcare
Pediatrics



1401

1401 Highway 160
Pahrump, NV 89048



PROPERTY OVERVIEW

1401 Highway 160 is a single tenant medical office building consisting of 4,200 square feet of space. The property is located across the street from Intermountain Healthcare Medical Center.

Located near many amenities such as Nevada State Bank, Bank of America, Fitness For 10 - Pahrump, Johnny's Taco Shop, Subway, McDonald's, Starbucks, Walgreens, Saddle West Hotel Casino RV Resort, Pahrump Nugget, Smith's Food and Drug, and Walmart.

HIGHLIGHTS



Single Tenant Medical Office Building



Rate: \$1.45 Modified Gross



Furniture Available



Pahrump Location



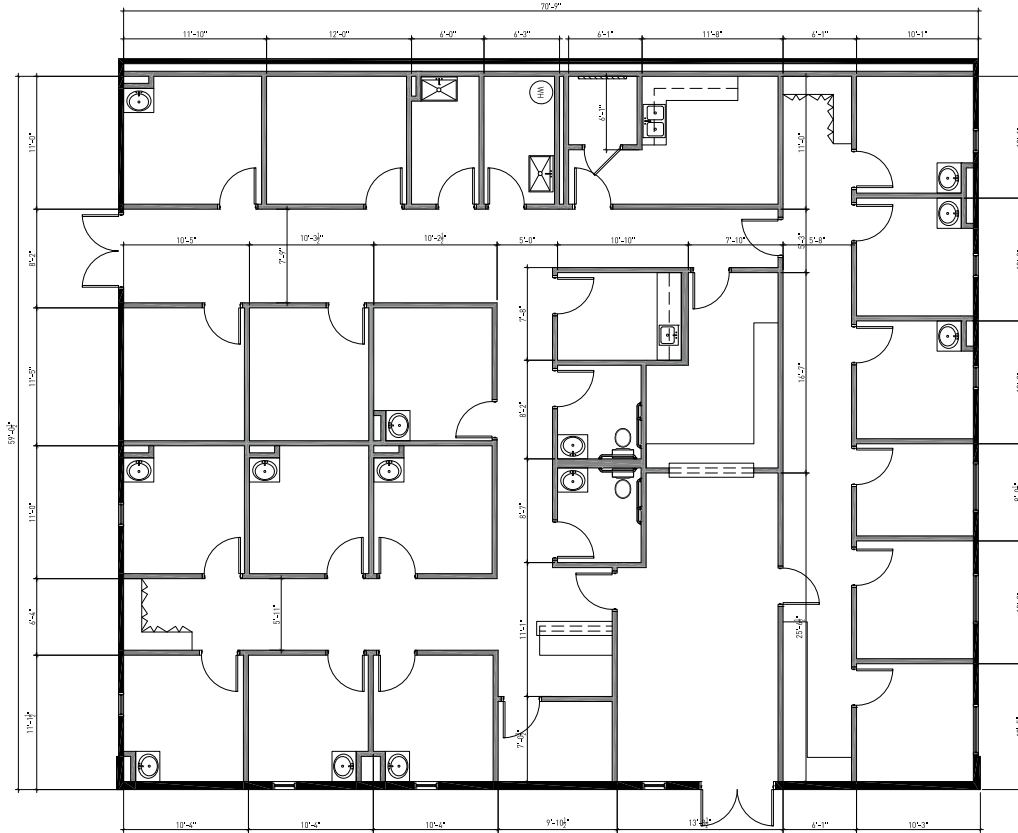
Ample Parking Available



Sublease Expires March 31, 2024

SUITE B

4,200 RSF



SUITE B DESCRIPTION:

- Reception Area
- 3 Private Offices
- 14 Exam Rooms
- Lab Room
- IT Closet
- File Room



CONTACT

AMY LANCE

Director

amy.lance@cushwake.com

+1 702 688 6872

Lic #S.0051283

6725 Via Austi Pkwy., Suite 275

Las Vegas, NV 89119

Main: +1 702 796 7900

Fax: +1 702 796 7920

cushmanwakefield.com

