

CREATIVE OFFICE SPACE FOR LEASE  
**500 COCHRANE DRIVE, UNIT A**  
MARKHAM, ONTARIO



## PROPERTY DETAILS

Address:	500 Cochrane Drive, Unit A
Unit Size:	4,220 SF Divisible
Asking Rent:	\$10.95 Net
T.M.I.:	\$4.15 PSF (2020)
Occupancy:	Immediate



## PROPERTY HIGHLIGHTS

- Excellent frontage and signage opportunity on Cochrane Drive
- Well located with close proximity to downtown Markham, Hwy 7, 407, 404, and Woodbine Avenue
- Ample on site parking
- Space is in base building condition. Landlord will upgrade to Tenant specifications
- Creative/Artistic uses will be complementary to existing Tenant makeup
- Landlord will divide the space in half
- Utilities will be on a proportionate basis
- Ample natural light

**STEPHANIE EDMISON\***  
Senior Associate, Commercial Leasing and Sales  
**416 756-5438**  
stephanie.edmison@cushwake.com

**MARK MCLAUGHLIN\***  
Vice President, Commercial Leasing and Sales  
**416 756-5451**  
mark.mclaughlin@ca.cushwake.com

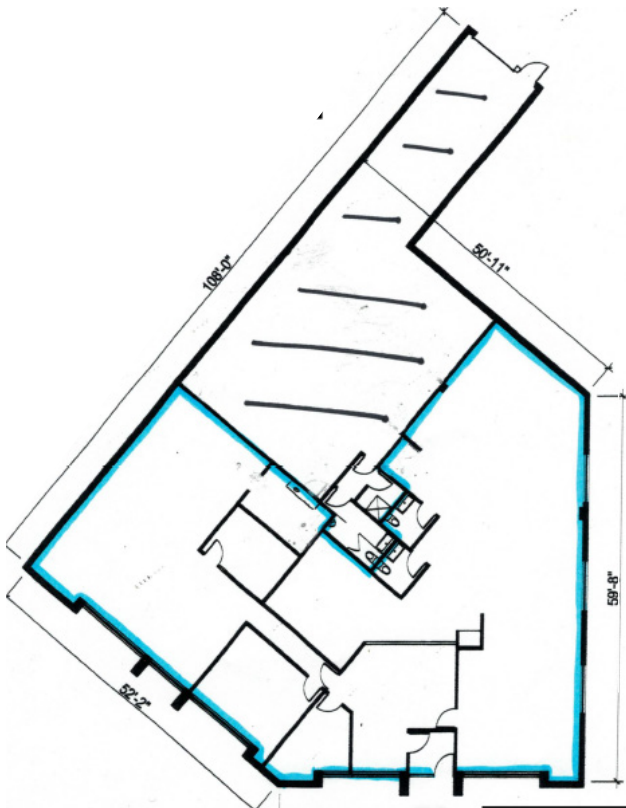
**CUSHMAN & WAKEFIELD ULC**  
1100 - 3100 STEELES AVENUE EAST  
MARKHAM, ON L3R 8T3  
www.cushmanwakefield.com

CREATIVE OFFICE SPACE FOR LEASE  
**500 COCHRANE DRIVE, UNIT A**  
MARKHAM, ONTARIO

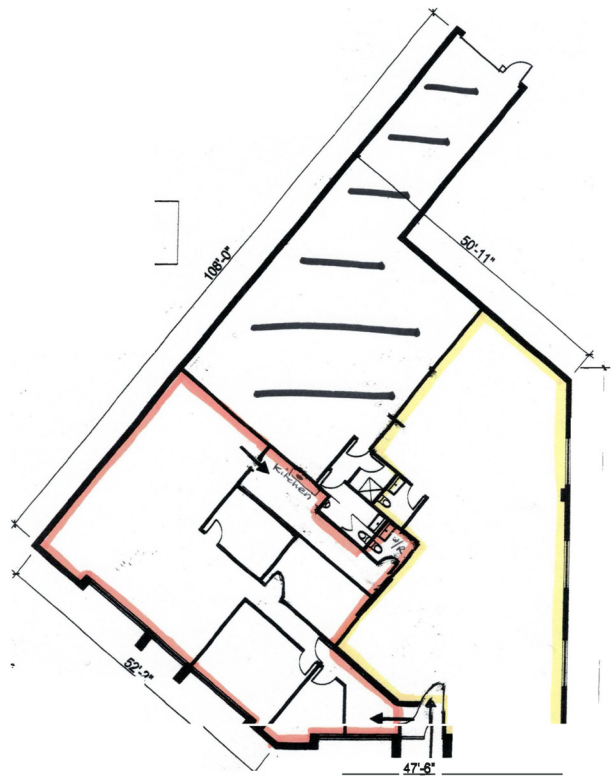


**FLOOR PLANS**

**OPTION A**  
EXISTING LAYOUT



**OPTION B**  
TWO UNITS



**STEPHANIE EDMISON\***  
Senior Associate, Commercial Leasing and Sales  
**416 756-5438**  
stephanie.edmison@cushwake.com

**MARK MCLAUGHLIN\***  
Vice President, Commercial Leasing and Sales  
**416 756-5451**  
mark.mclaughlin@ca.cushwake.com

**CUSHMAN & WAKEFIELD ULC**  
1100 - 3100 STEELES AVENUE EAST  
MARKHAM, ON L3R 8T3  
www.cushmanwakefield.com