

801

GREENWICH STREET



©2024 CUSHMAN & WAKEFIELD. ALL RIGHTS RESERVED. THE INFORMATION CONTAINED IN THIS COMMUNICATION IS STRICTLY CONFIDENTIAL. THIS INFORMATION HAS BEEN OBTAINED FROM SOURCES BELIEVED TO BE RELIABLE BUT HAS NOT BEEN VERIFIED. NO WARRANTY OR REPRESENTATION, EXPRESS OR IMPLIED, IS MADE AS TO THE CONDITION OF THE PROPERTY (OR PROPERTIES) REFERENCED HEREIN OR AS TO THE ACCURACY OR COMPLETENESS OF THE INFORMATION CONTAINED HEREIN, AND SAME IS SUBMITTED SUBJECT TO ERRORS, OMISSIONS, CHANGE OF PRICE, RENTAL OR OTHER CONDITIONS, WITHDRAWAL WITHOUT NOTICE, AND TO ANY SPECIAL LISTING CONDITIONS IMPOSED BY THE PROPERTY OWNER(S). ANY PROJECTIONS, OPINIONS OR ESTIMATES ARE SUBJECT TO UNCERTAINTY AND DO NOT SIGNIFY CURRENT OR FUTURE PROPERTY PERFORMANCE.

PREMISES

Ground: 1,653 SF
Lower Level: 965 SF

FRONTAGE

20'

CEILING HEIGHTS

12 Feet

POSSESSION

Immediate

ASKING RENT

Upon Request

COMMENTS

- Retail opportunity along Greenwich Street in the heart of the West Village
- New ownership undergoing a full building renovation
- Existing shaftway to be converted into retail for expanded frontage and interior space
- Skylights in place on the Ground Floor
- Steps from the Meatpacking District, Stafili Wine Cafe, The Mary Lane and Left Bank



New storefront to be installed

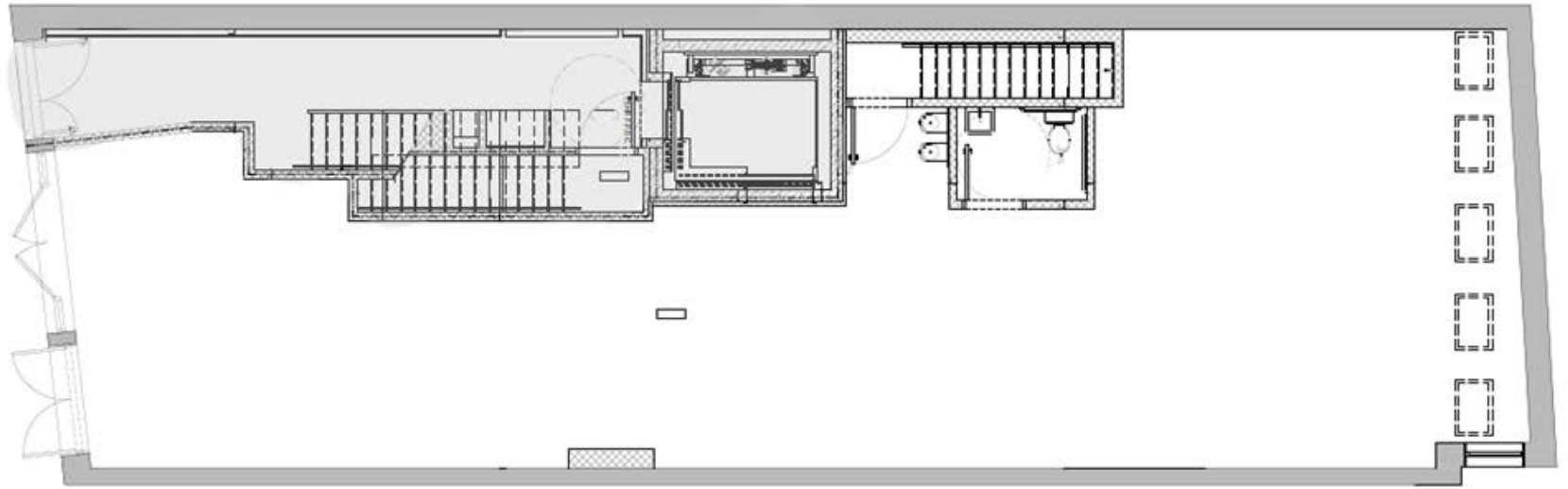
STEVEN SOUTENDIJK +1 212 713 6845
SEAN MORAN +1 212 841 7668
PATRICK O'ROURKE +1 212 660 7777
MADDIE HAMILTON +1 410 864 3555

STEVEN.SOUTENDIJK@CUSHWAKE.COM
SEAN.MORAN@CUSHWAKE.COM
PATRICK.OROURKE@CUSHWAKE.COM
MADDIE.HAMILTON@CUSHWAKE.COM

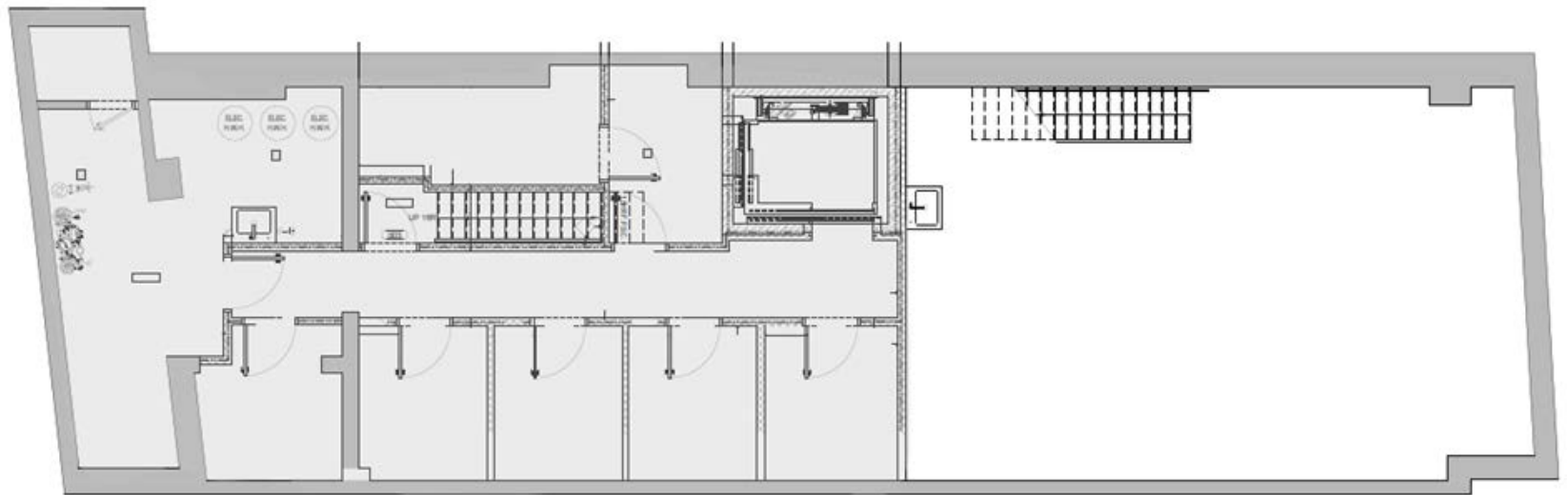


GROUND FLOOR
1,653 SF

GREENWICH STREET



LOWER LEVEL
965 SF



STEVEN SOUTENDIJK + 212 713 6845
SEAN MORAN +1 212 841 7668
PATRICK O'ROURKE +1 212 660 7777
MADDIE HAMILTON +1 410 864 3555

STEVEN.SOUTENDIJK@CUSHWAKE.COM
SEAN.MORAN@CUSHWAKE.COM
PATRICK.OROURKE@CUSHWAKE.COM
MADDIE.HAMILTON@CUSHWAKE.COM

