

280

BLEECKER STREET

Slutty Vegani



CUSHMAN &
WAKEFIELD

©2024 CUSHMAN & WAKEFIELD. ALL RIGHTS RESERVED. THE INFORMATION CONTAINED IN THIS COMMUNICATION IS STRICTLY CONFIDENTIAL. THIS INFORMATION HAS BEEN OBTAINED FROM SOURCES BELIEVED TO BE RELIABLE BUT HAS NOT BEEN VERIFIED. NO WARRANTY OR REPRESENTATION, EXPRESS OR IMPLIED, IS MADE AS TO THE CONDITION OF THE PROPERTY (OR PROPERTIES) REFERENCED HEREIN OR AS TO THE ACCURACY OR COMPLETENESS OF THE INFORMATION CONTAINED HEREIN, AND SAME IS SUBMITTED SUBJECT TO ERRORS, OMISSIONS, CHANGE OF PRICE, RENTAL OR OTHER CONDITIONS, WITHDRAWAL WITHOUT NOTICE, AND TO ANY SPECIAL LISTING CONDITIONS IMPOSED BY THE PROPERTY OWNER(S). ANY PROJECTIONS, OPINIONS OR ESTIMATES ARE SUBJECT TO UNCERTAINTY AND DO NOT SIGNIFY CURRENT OR FUTURE PROPERTY PERFORMANCE.

PREMISES

Ground: 1,500 SF
Lower Level: 1,500 SF

FRONTAGE

18'

CEILING HEIGHTS

11'

POSSESSION

Immediate

ASKING RENT

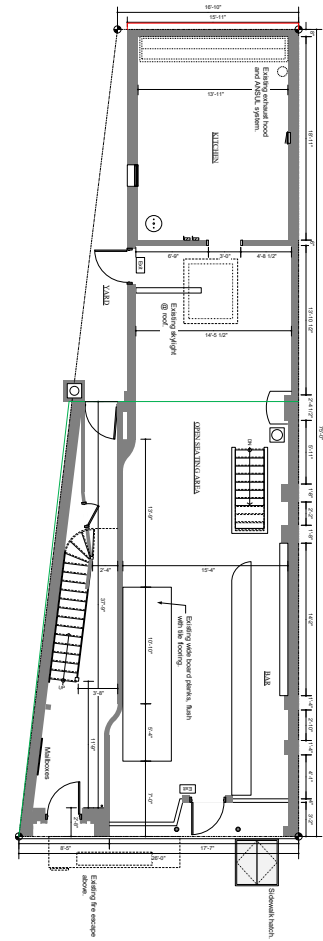
Upon Request

COMMENTS

- Recently built second generation restaurant opportunity
- All kitchen infrastructure in place
- Premier West Village location on one of the best stretches on Bleecker Street
- Join Murray's Cheese, Blind Tiger, Caliente Cab, John's of Bleecker Street, Lil Charli, Trattoria Pesce Pasta & Tacombi

GROUND

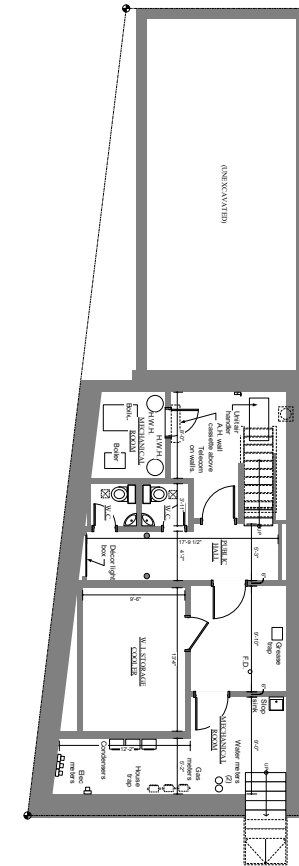
1,500 SF



BLEECKER STREET

LOWER LEVEL

1,500 SF



STEVEN SOUTENDIJK +1 212 713 6845
SEAN MORAN +1 212 841 7668
PATRICK O'ROURKE +1 212 660 7777
MADDIE HAMILTON +1 410 864 3555

STEVEN.SOUTENDIJK@CUSHWAKE.COM
SEAN.MORAN@CUSHWAKE.COM
PATRICK.OROURKE@CUSHWAKE.COM
MADDIE.HAMILTON@CUSHWAKE.COM





STEVEN SOUTENDIJK
SEAN MORAN
PATRICK O'ROURKE
MADDIE HAMILTON

+1 212 713 6845
 +1 212 841 7668
 +1 212 660 7777
 +1 410 864 3555

STEVEN.SOUTENDIJK@CUSHWAKE.COM
 SEAN.MORAN@CUSHWAKE.COM
 PATRICK.OROURKE@CUSHWAKE.COM
 MADDIE.HAMILTON@CUSHWAKE.COM

