



WESTLAKE OFFICE SPACE FOR LEASE

27887 CLEMENS ROAD, WESTLAKE, OHIO 44145

27887 CLEMENS ROAD

HIGHLIGHTS

- Direct access to suite
- Move-in ready spaces
- Monument signage
- Patio with outdoor seating
- Tenant controls their own HVAC
- Fiber available
- On-site generator
- Excellent access to I-90
- Located just minutes from Crocker Park

AVAILABLE SPACE

Unit 4 2,070 SF

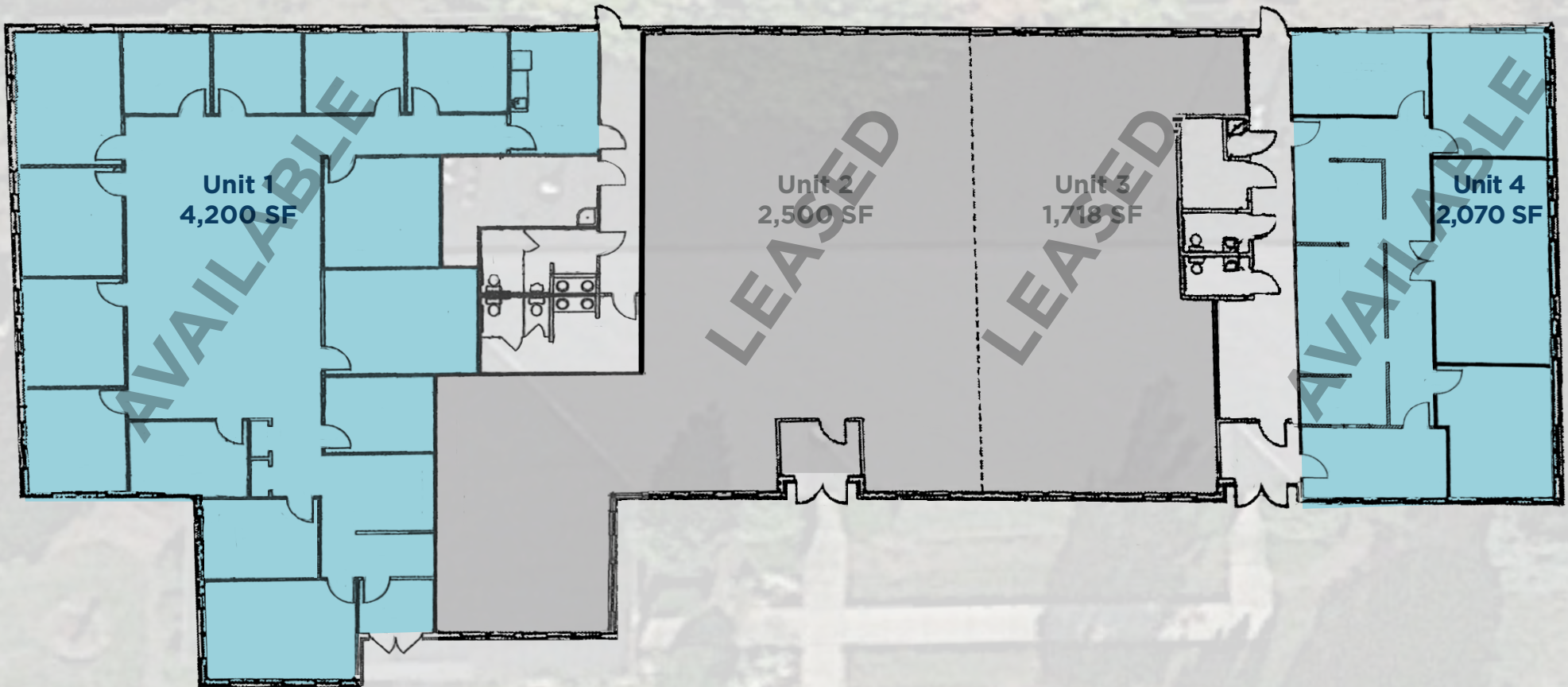
Unit 1 4,200 SF

LEASE RATE

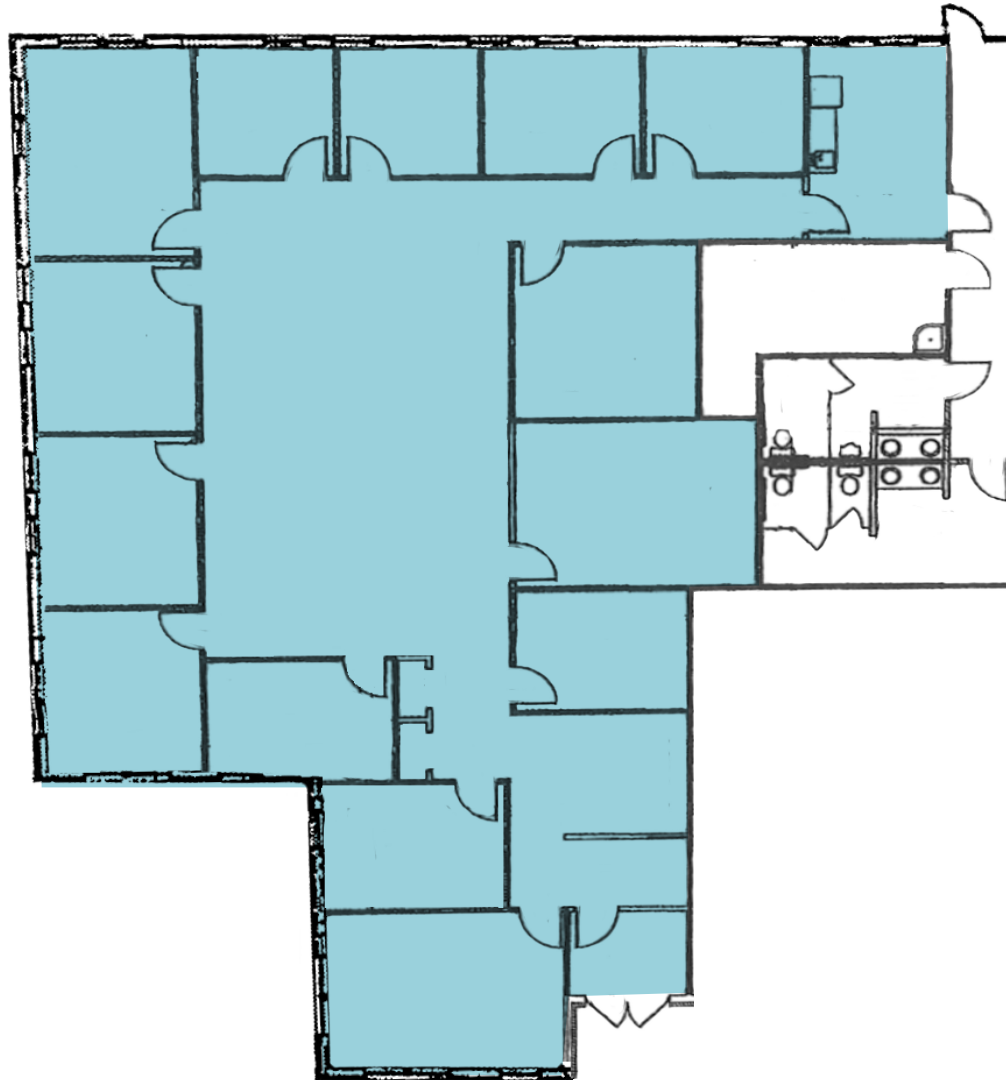
\$18.00/SF MG



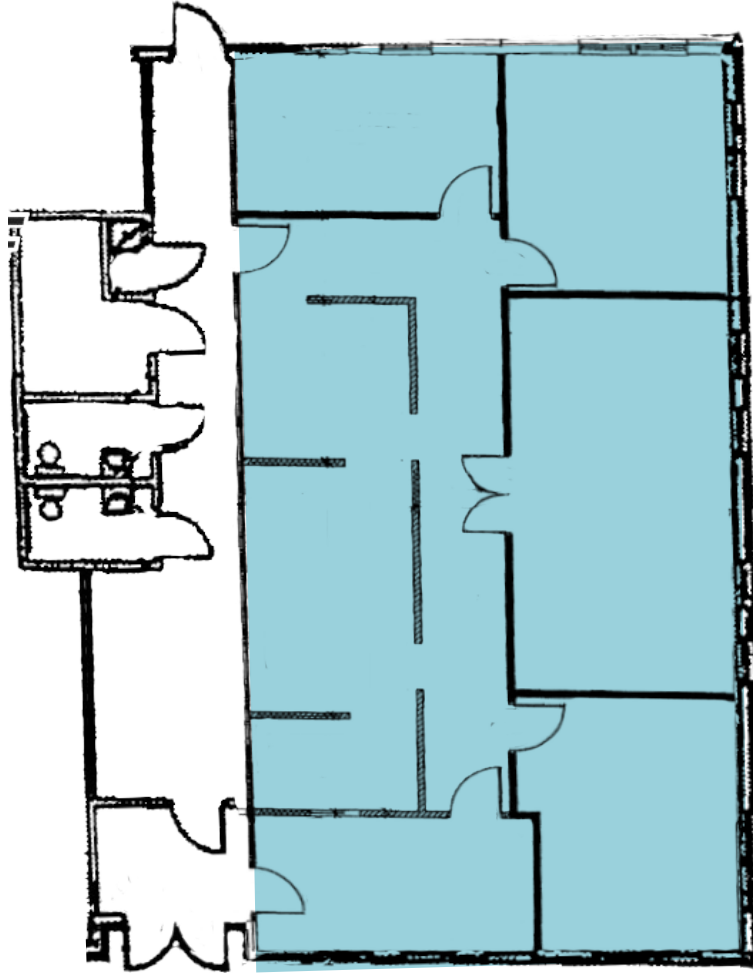
27887 CLEMENS ROAD



UNIT 1: 4,200 SF



UNIT 4: 2,070 SF







2787 Clemens Road



THE PROMENADE
 Market DISTRICT
 NORDSTROM rack
 REGAL
 BED BATH & BEYOND
 Office Max
 Starbucks
 carhartt
 FIVE GUYS
 Citizens Bank
 BRUEGGER'S BAGELS

WEST BAY PLAZA
 ULTA
 FRESH THYME MARKET
 CHIPOTE MEXICAN RESTAURANT
 Kirkland's
 PET SUPPLIES PLUS
 HOME SENSE
 KeyBank

rosewood GRILL
 FIRST FEDERAL LAKEWOOD
 Huntington

CROCKER PARK
 Apple
 H&M
 TRADER JOE'S
 DICK'S SPORTING GOODS
 DSW
 Sur la table
 ARHAUS
 HYDE PARK
 Yard House
 ANTHROPOLOGIE
 WOLFE BROS. CONDADO
 3 Palms
 THE PASTA CO-OP
 CYCLE BAR
 BARNES & NOBLE
 Aladdin's
 BARROCO
 Office Max
 FIRST WATCH
 ATHLETA
 BANANA REPUBLIC
 HOT CHICKEN TAKEOVER
 Homage
 BIBIBOP
 SEPHORA
 J.CREW

CROCKER COMMONS
 SHAKE SHACK
 MISSION BBQ
 CHOLA LAH
 KS
 verizon
 The KIDS DENTIST

CUSHMAN & WAKEFIELD
CRESCO
 Real Estate

Maureen Anter-Ressler
 mressler@crescorealestate.com
 +1 216 525 1494

Robby Martinelli
 rmartinelli@crescorealestate.com
 +1 216 232 4104

Rico Pietro, SIOR
 rpietro@crescorealestate.com
 +1 216 525 1473

Kirsten Paratore
 kparatore@crescorealestate.com
 +1 216 525 1491

Cushman & Wakefield | CRESCO Real Estate 6100 Rockside Woods Blvd, Suite 200, Cleveland, OH 44131 crescorealestate.com

©2024 Cushman & Wakefield. All rights reserved. The information contained in this communication is strictly confidential. This information has been obtained from sources believed to be reliable but has not been verified. NO WARRANTY OR REPRESENTATION, EXPRESS OR IMPLIED, IS MADE AS TO THE CONDITION OF THE PROPERTY (OR PROPERTIES) REFERENCED HEREIN OR AS TO THE ACCURACY OR COMPLETENESS OF THE INFORMATION CONTAINED HEREIN, AND SAME IS SUBMITTED SUBJECT TO ERRORS, OMISSIONS, CHANGE OF PRICE, RENTAL OR OTHER CONDITIONS, WITHDRAWAL WITHOUT NOTICE, AND TO ANY SPECIAL LISTING CONDITIONS IMPOSED BY THE PROPERTY OWNER(S). ANY PROJECTIONS, OPINIONS OR ESTIMATES ARE SUBJECT TO UNCERTAINTY AND DO NOT SIGNIFY CURRENT OR FUTURE PROPERTY PERFORMANCE.