

FOR LEASE

# 821 - 851 MARTIN AVENUE

*±22,741 - ±72,741 SF R&D/Industrial/  
Manufacturing Campus Available*

SANTA CLARA, CA

 CUSHMAN &  
WAKEFIELD

 Kidder  
Mathews

FOR LEASE

*R&D/ Manufacturing Building With  
Easy Access to Hwy 101 and San Jose  
International Airport*

2,000 Amps @277/480 Volts

Inexpensive SVP utilities

Dock and grade level loading

100 % HVAC

Movement gym on-site

±4/1000 parking

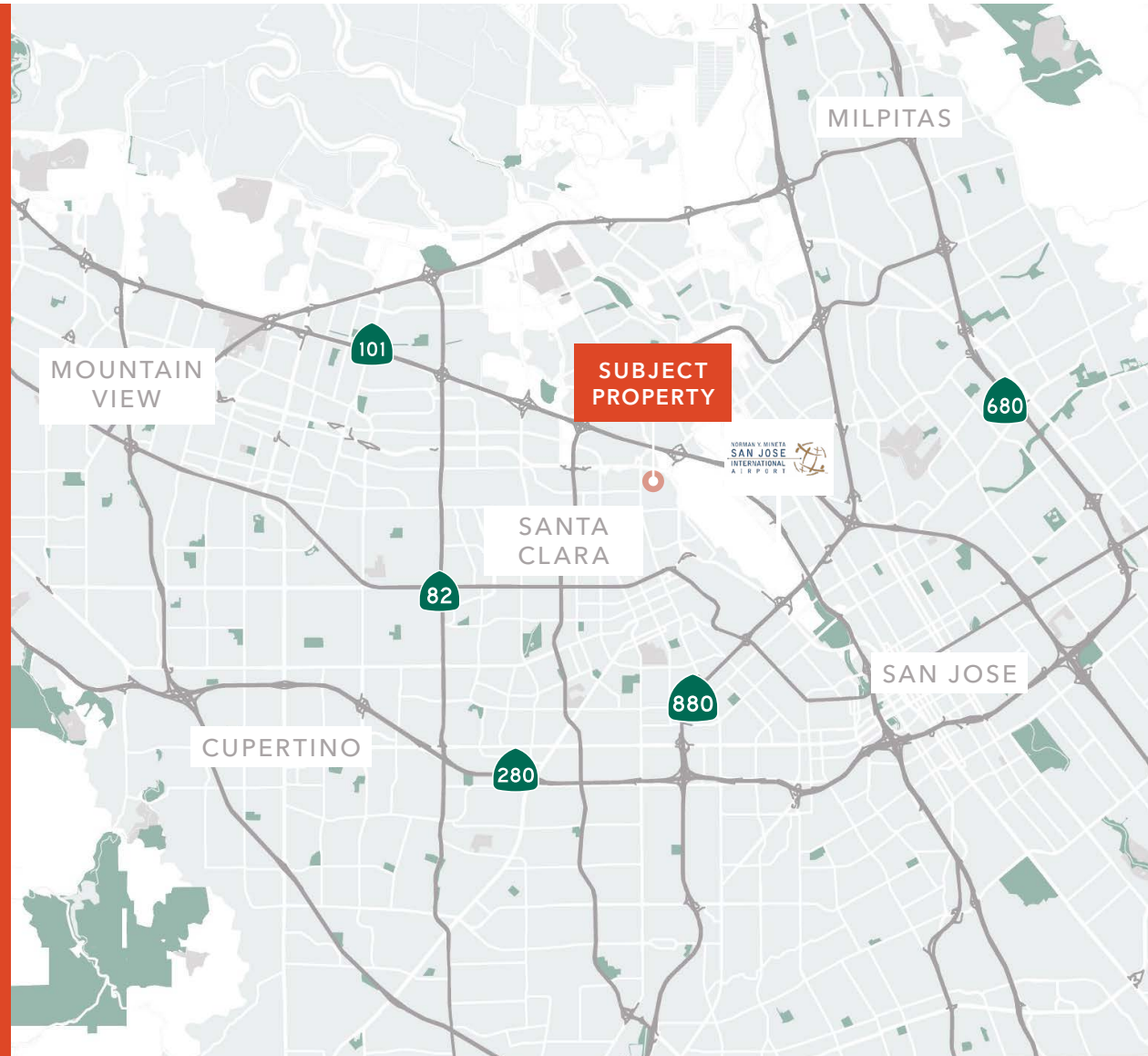
18' - 21' Clear height

**±22,741**

TOTAL SF 821 MARTIN

**±50,000**

TOTAL SF 831-851 MARTIN



**KIDDER.COM**

This information supplied herein is from sources we deem reliable. It is provided without any representation, warranty, or guarantee, expressed or implied as to its accuracy. Prospective Buyer or Tenant should conduct an independent investigation and verification of all matters deemed to be material, including, but not limited to, statements of income and expenses. Consult your attorney, accountant, or other professional advisor.



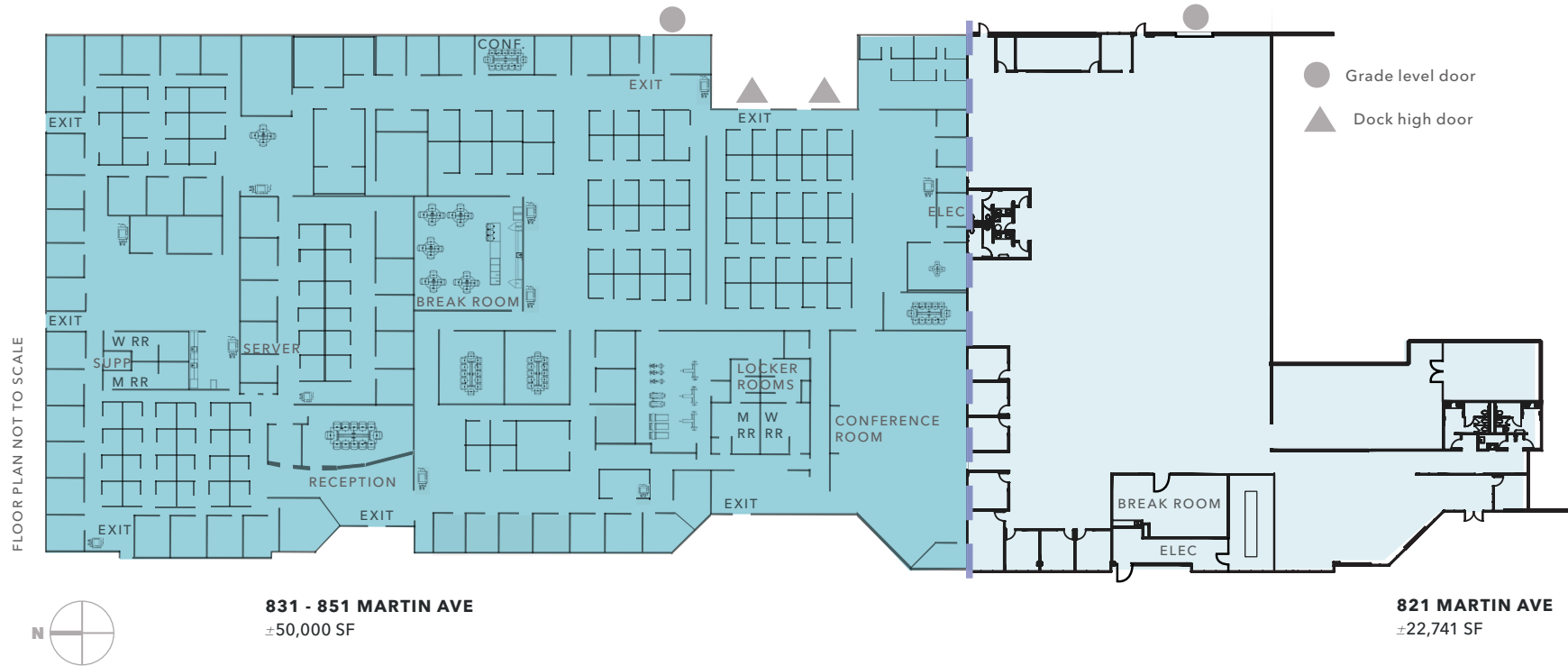
FOR LEASE



[KIDDER.COM](https://www.kidder.com)

This information supplied herein is from sources we deem reliable. It is provided without any representation, warranty, or guarantee, expressed or implied as to its accuracy. Prospective Buyer or Tenant should conduct an independent investigation and verification of all matters deemed to be material, including, but not limited to, statements of income and expenses. Consult your attorney, accountant, or other professional advisor.





**AVAILABILITIES**

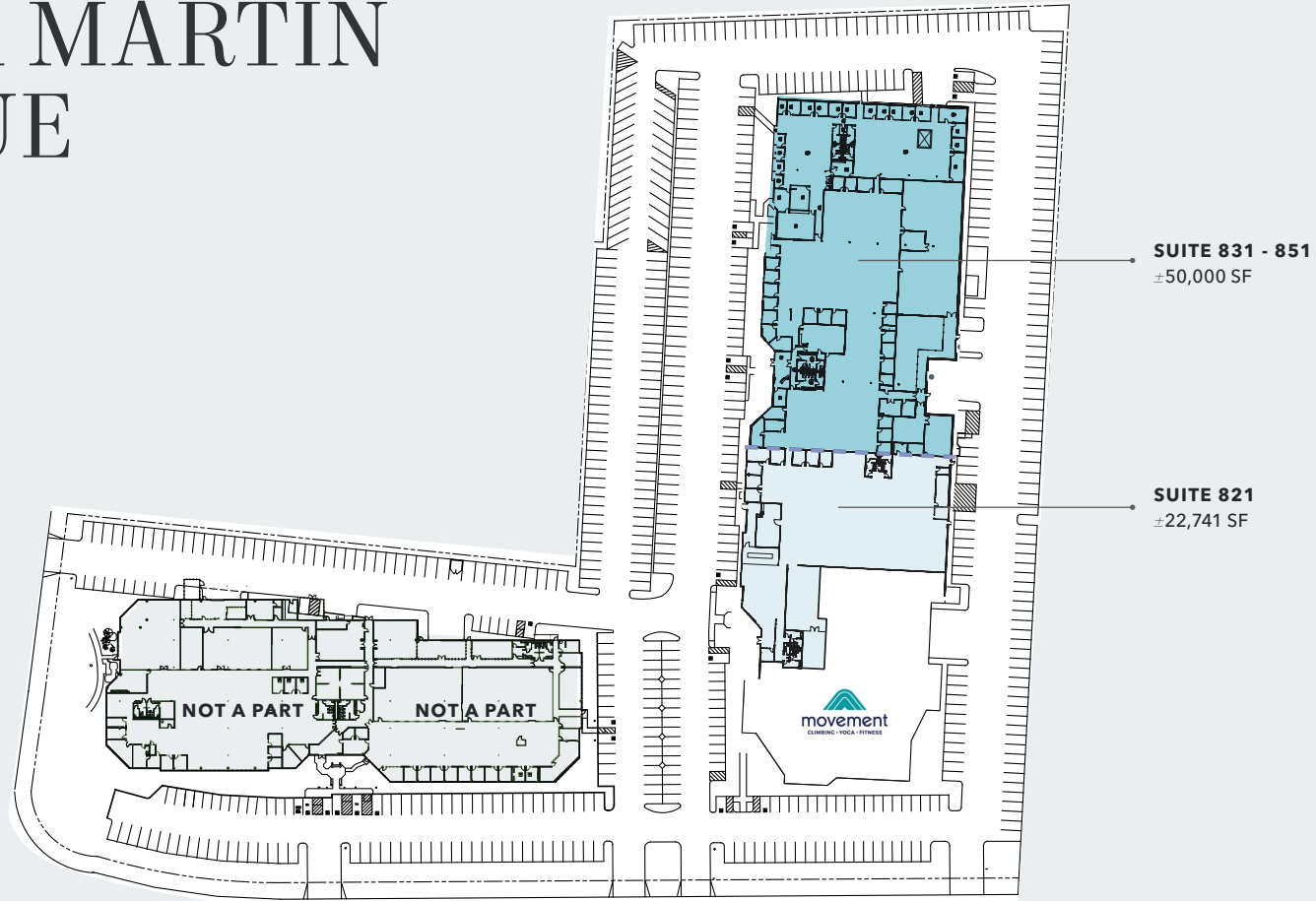
Suite	Date Available	Size
Suite 821	Now	±22,741 SF
Suite 831 - 851	On or prior to 12/31/24	±50,000 SF

**KIDDER.COM**

This information supplied herein is from sources we deem reliable. It is provided without any representation, warranty, or guarantee, expressed or implied as to its accuracy. Prospective Buyer or Tenant should conduct an independent investigation and verification of all matters deemed to be material, including, but not limited to, statements of income and expenses. Consult your attorney, accountant, or other professional advisor.



# 821-851 MARTIN AVENUE



*For more information, contact*

**DAVE GEISSBERGER**

Kidder Mathews

408.588.2338

dave.geissberger@kidder.com

LIC N° 01401887

**KALIL JENAB**

Cushman & Wakefield

408.810.3428

kalil.jenab@cushwake.com

LIC N° 00848988

**STEVEN ALI JENAB**

Cushman & Wakefield

408.718.1804

steven.jenab@cushwake.com

LIC N° 02085072

KIDDER.COM

This information supplied herein is from sources we deem reliable. It is provided without any representation, warranty, or guarantee, expressed or implied as to its accuracy. Prospective Buyer or Tenant should conduct an independent investigation and verification of all matters deemed to be material, including, but not limited to, statements of income and expenses. Consult your attorney, accountant, or other professional advisor.

