

OFFICE SPACE FOR LEASE

420 TESCONI CIRCLE UNIT A

SANTA ROSA, CA

Niels Von Doepp

+1 415 451 2403

niels.vondoepp@cushwake.com

Lic #: 01447530

Trevor Buck

+1 415 451 2436

trevor.buck@cushwake.com

Lic #: 01255462

420 TESCONI CIRCLE UNIT A



PROPERTY HIGHLIGHTS

Unit A is a ground floor corner suite with 6 private offices, a bullpen, employee break room, private bathrooms, and storage. The space features a glass window line, business park setting, great monument signage, and on-site parking. The building is in a prime central Santa Rosa location with close proximity to the Sonoma Marin SMART Train and US 101.

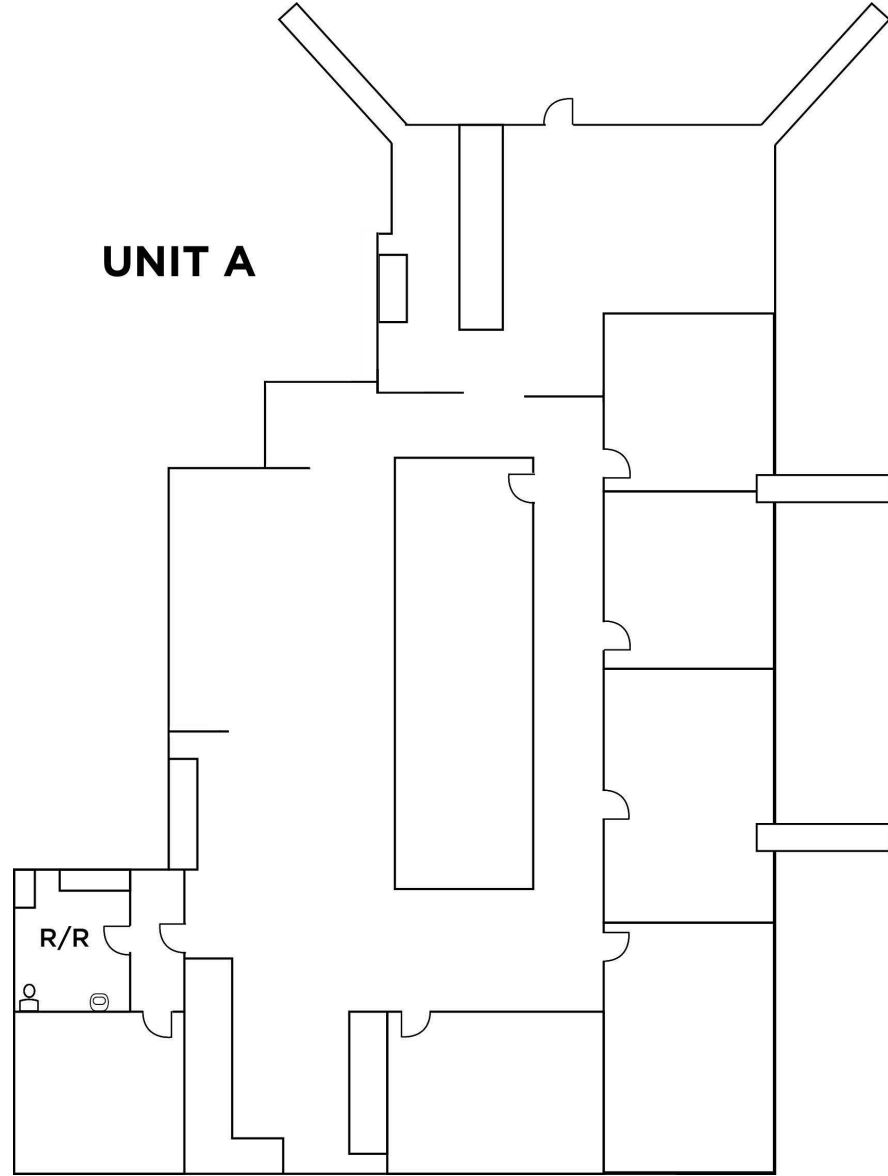
PROPERTY FEATURES

Available Space:	2,450 SF	Parking Spaces:	48
Rate:	\$1.35 PSF Gross	Class:	B
Zoning:	B/P	Year Built:	1979
Parking Ratio:	3.11/1,000		

420 TESCONI CIRCLE UNIT A

FLOOR PLAN

UNIT A



420 TESCONI CIRCLE UNIT A



Restaurants & Fast Foods



- | | |
|-------------------------------------|--------------------------------------|
| 1. Franchettis Gasthaus + Biegarten | 7. La Rosa Tequileria & Grille |
| 2. Carlos Country Kitchen | 8. Brew Coffee and Beer House |
| 3. Zam Zam | 9. Cafe Mimosa |
| 4. Stark's Steak & Seafood | 10. Chick-fil-a |
| 5. Grossman's Noshery & Bar | 11. Ike's Love & Sandwiches |
| 6. Panda Express | 12. Papa Murphy's Take N' Bake Pizza |

Retail



- | | |
|--------------------------|---------------------|
| 1. The UPS Store | 7. Macy's |
| 2. Safeway | 8. Santo Riza Plaza |
| 3. Enterprise Rent-A-Car | 9. Barnes & Nobles |
| 4. Target | 10. Grocery Outlet |
| 5. JCPenny | 11. Dollar Tree |
| 6. Whole Foods Market | |

Legend



Smart Train



U.S. Route 101



FOR MORE INFORMATION, CONTACT:

Niels Von Doepp

Director
+1 415 451 2403
niels.vondoep@cushwake.com
Lic #: 01447530

Trevor Buck

Executive Managing Director
+1 415 451 2436
trevor.buck@cushwake.com
Lic #: 01255462

