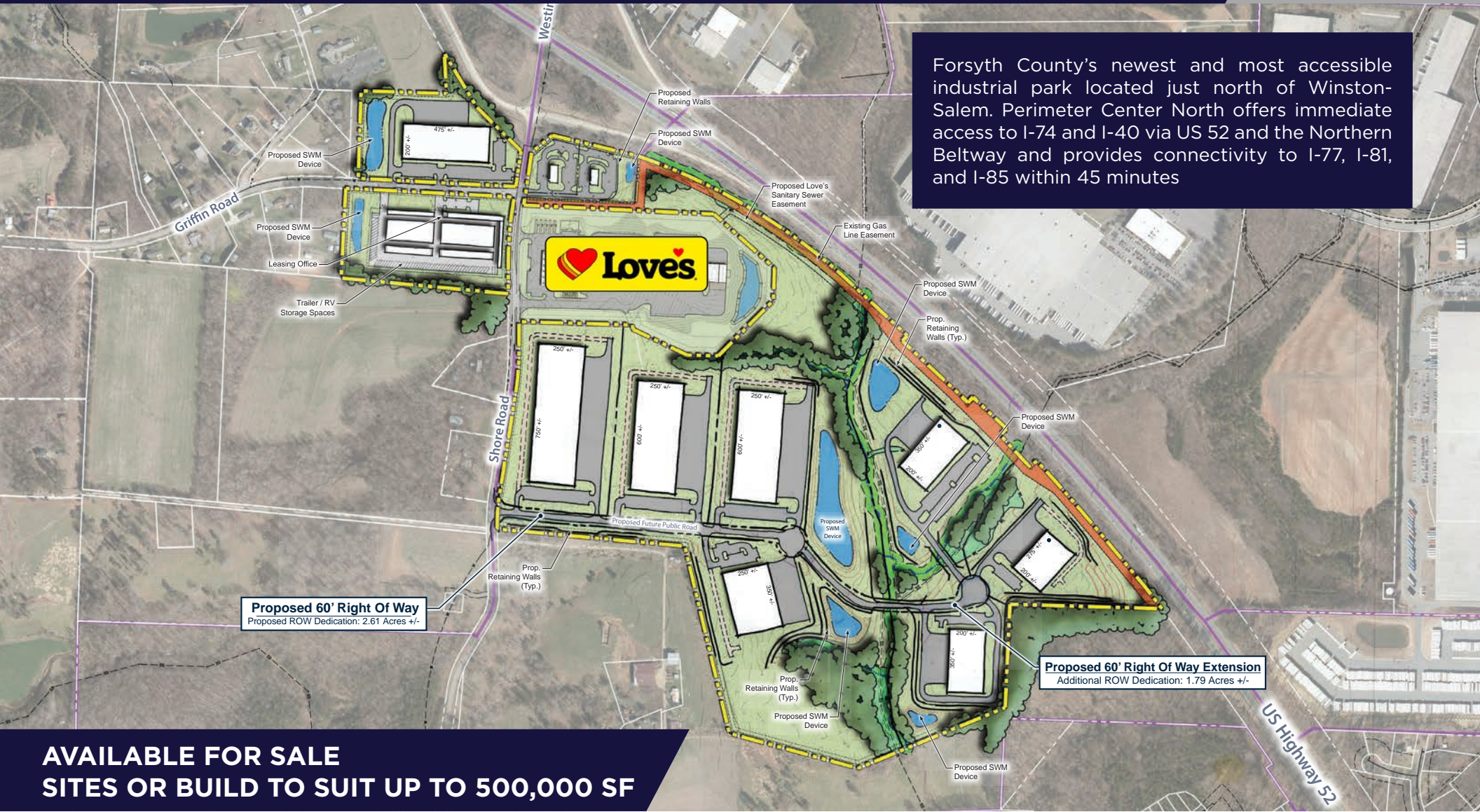


Forsyth County's newest and most accessible industrial park located just north of Winston-Salem. Perimeter Center North offers immediate access to I-74 and I-40 via US 52 and the Northern Beltway and provides connectivity to I-77, I-81, and I-85 within 45 minutes



**AVAILABLE FOR SALE
SITES OR BUILD TO SUIT UP TO 500,000 SF**

CONTACT INFORMATION:









John Schultz
Managing Director
+1 336 812 3301
john.schultz1@cushwake.com

Bobby Finch
Executive Managing Director
+1 336 812 3303
bobby.finch@cushwake.com

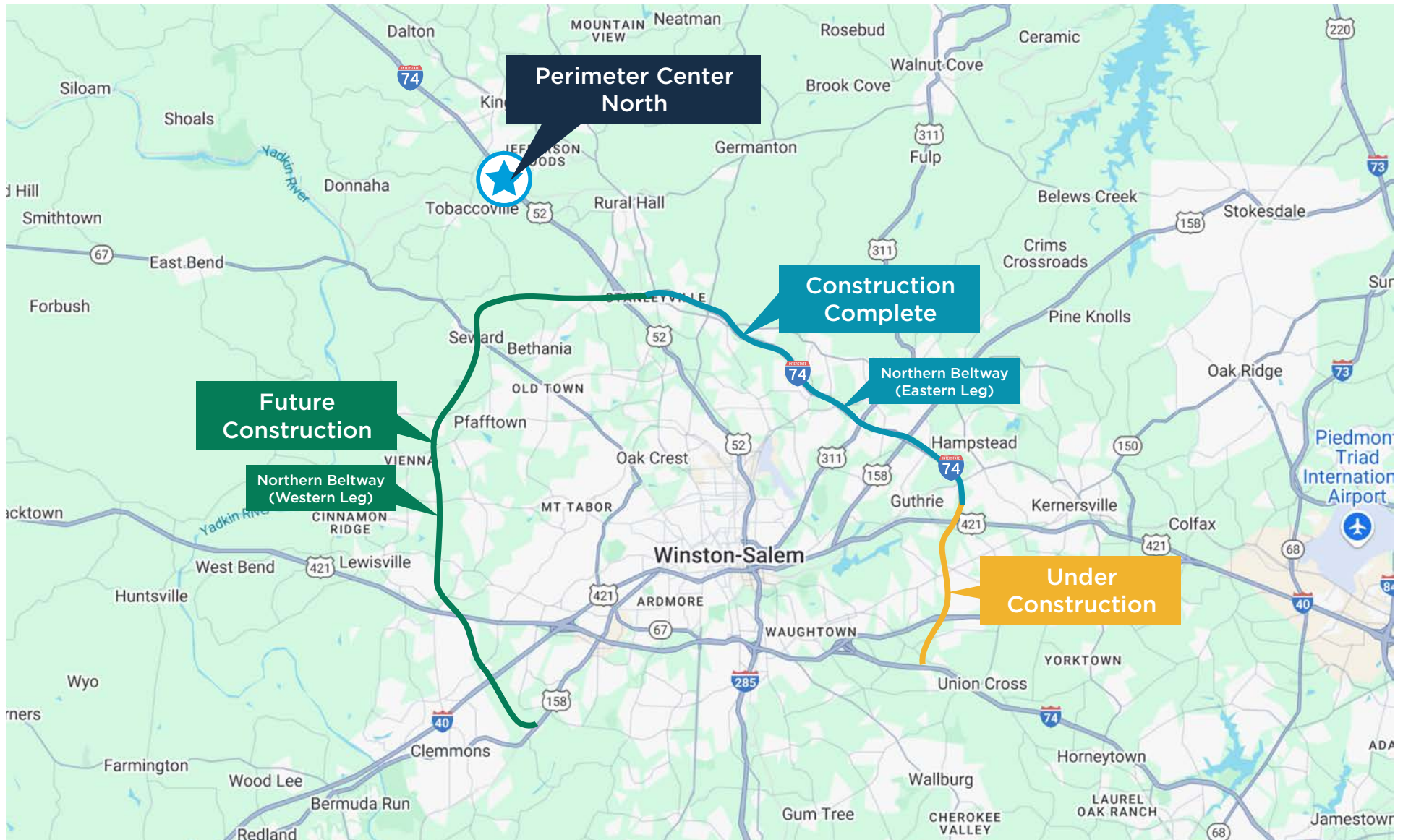
Ryan Conboy, SIOR
Senior Director
+1 336 821 3832
ryan.conboy@cushwake.com

AERIAL VIEW

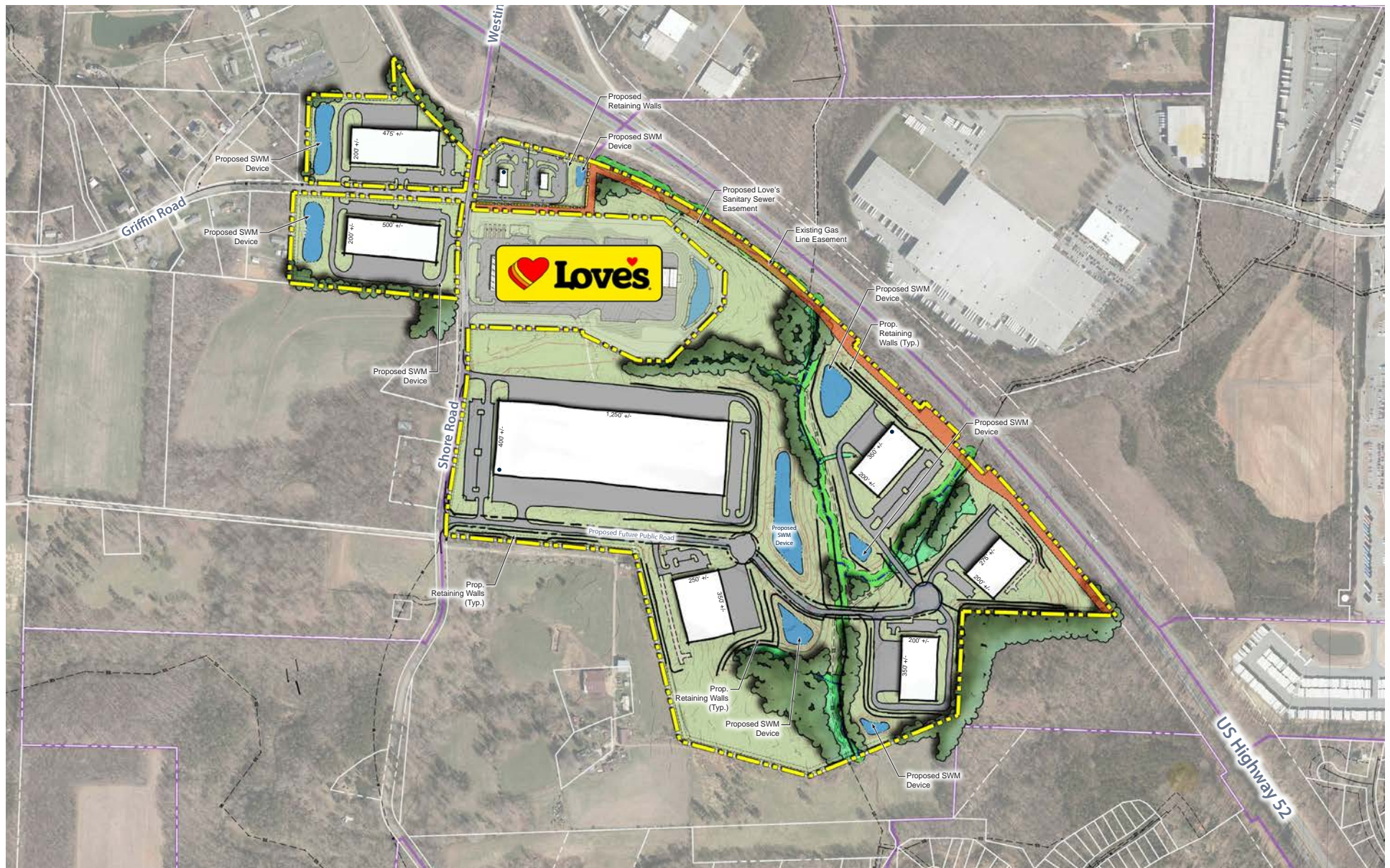


-  Available For Sale
-  Up to ±127 AC
-  Zoned LI-S Limited Industrial
-  Individual sites from ±10 AC
-  All utilities are available
-  Immediately off I-74 / US52
-  Adjacent to brand new Love's Truck Center
-  Build to Suit up to 500,000 SF

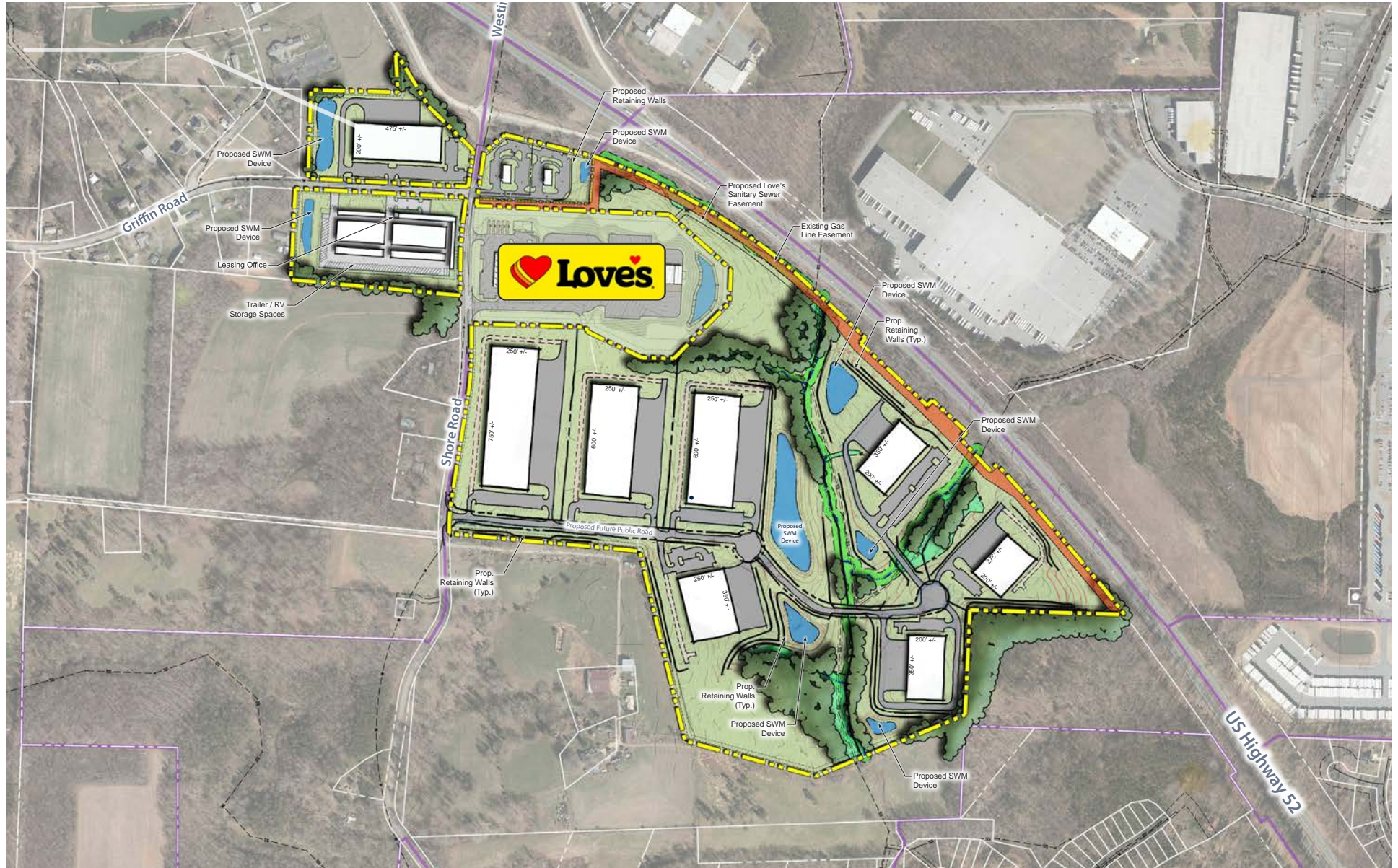
WINSTON-SALEM NORTHERN BELTWAY



SITE PLAN



SITE PLAN



Perimeter Center North

