

**MOVE-IN READY  
OFFICE CONDO  
FOR SALE OR LEASE**



**1100 QUEENSBOROUGH BLVD  
SUITE 202**

# 1100 QUEENSBOROUGH BLVD SUITE 202

MOUNT PLEASANT, SC 29464



## FOR SALE OR LEASE

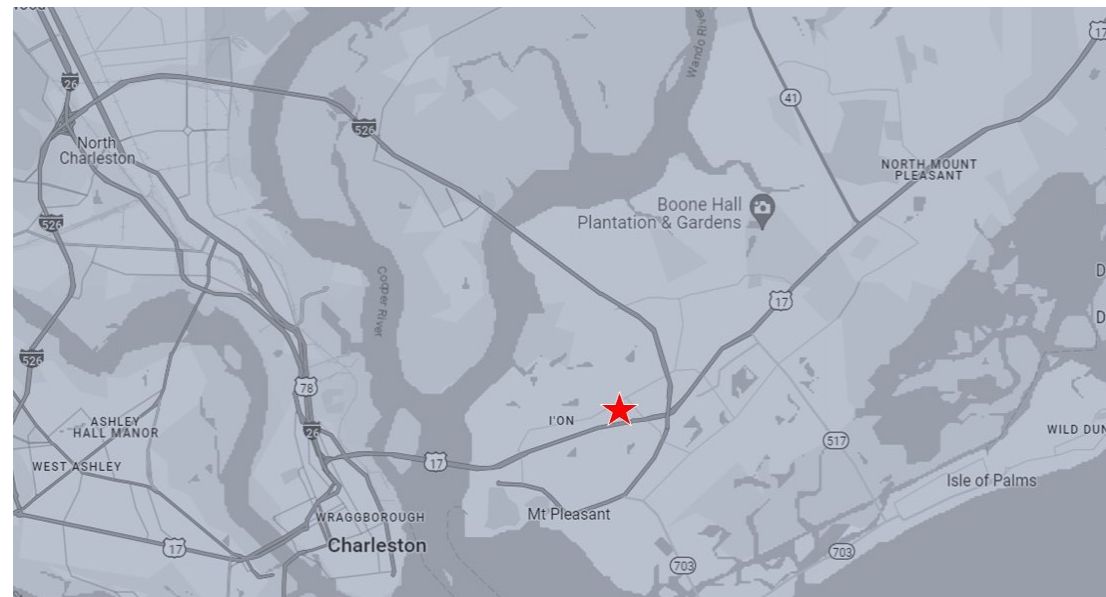
- Move-In Ready Office Condo
- Located Within the Queensborough Shopping Center with Numerous Walkable Amenities Including Publix & Locals Sushi
- Free Surface Parking
- Furniture Negotiable
- Call Broker for More Information

**BUILDING SIZE:**  
12,392 SF

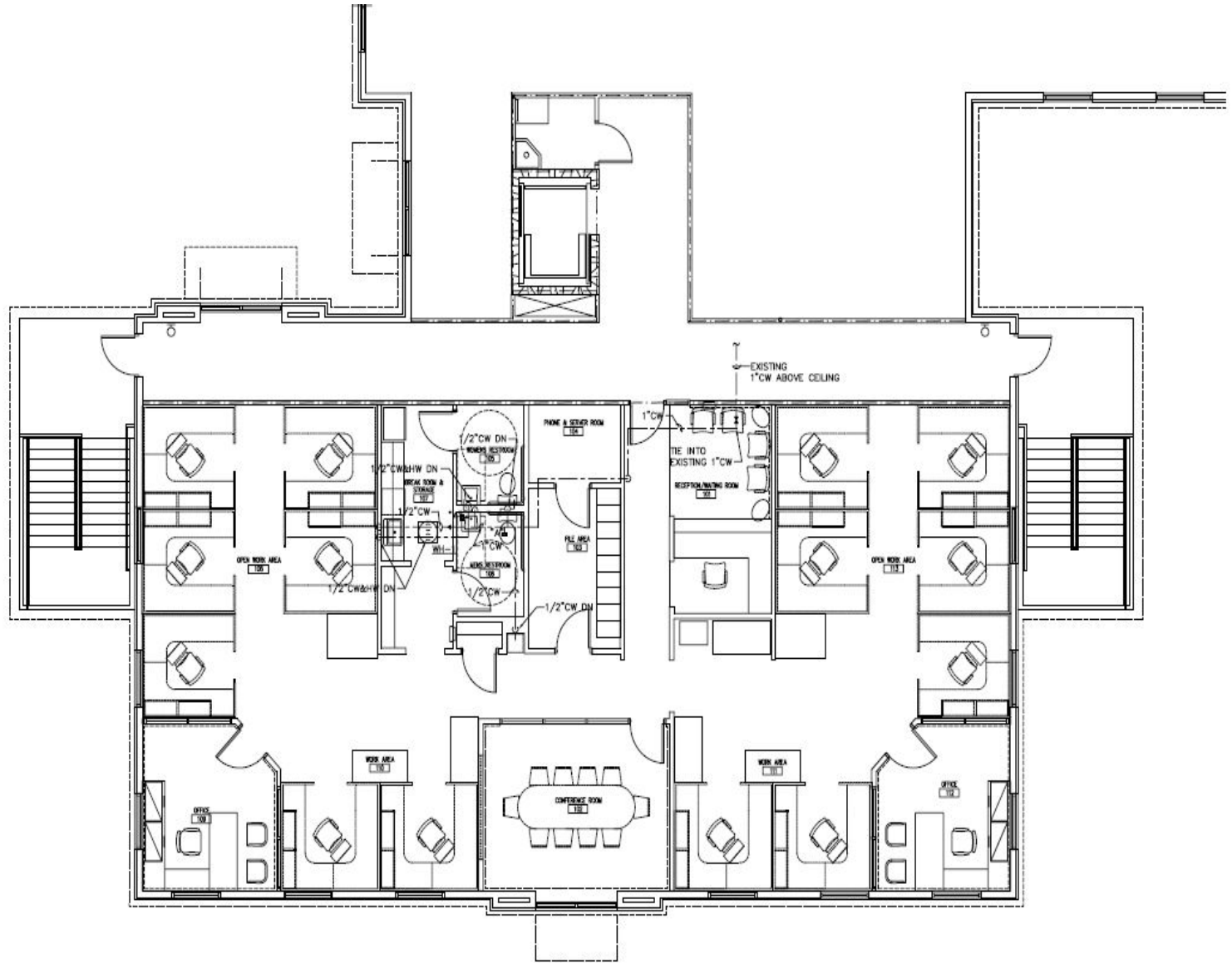
**AVAILABLE SPACE:**  
2,900 SF

**YEAR BUILT:**  
2006

**ASKING PRICE:**  
\$1,160,000



SUITE 202  
2,900 sq. ft.



ANNA KNAPP BLVD

BRADY DASHIELL  
SENIOR ASSOCIATE  
1+ 843 724 0106  
[brady.dashiell@cushwake.com](mailto:brady.dashiell@cushwake.com)

NICK TANANA  
SENIOR DIRECTOR  
1+ 843 724 0109  
[nick.tanana@cushwake.com](mailto:nick.tanana@cushwake.com)

©2024 Cushman & Wakefield. All rights reserved. The information contained in this communication is strictly confidential. This information has been obtained from sources believed to be reliable but has not been verified. No warranty or representation, express or implied, is made as to the condition of the property (or properties) referenced herein or as to the accuracy or completeness of the information contained herein, and same is submitted subject to errors, omissions, change of price, rental or other conditions, withdrawal without notice, and to any special listing conditions imposed by the property owner(s). Any projections, opinions or estimates are subject to uncertainty and do not signify current or future property performance.

