

3,000 SF AVAILABLE FOR LEASE

514-516 E NORTH STREET

GREENVILLE, SC 29601



514-516
E NORTH STREET



PROPERTY HIGHLIGHTS

- Located in Greenville's Central Business District
- Highly Visible Office Location
- Turn-key Move-in ready space
- On-Site Parking

PROPERTY FEATURES

SIZE:	3,000 SF
PARKING:	8 surface spaces
YEAR BUILT:	1998 (Renovated 2024)
SUBMARKET:	CBD
LEASE RATE:	\$20.00/SF MG

FLOORPLAN & PARCEL



DEMOGRAPHICS - 1 Mile

12,456

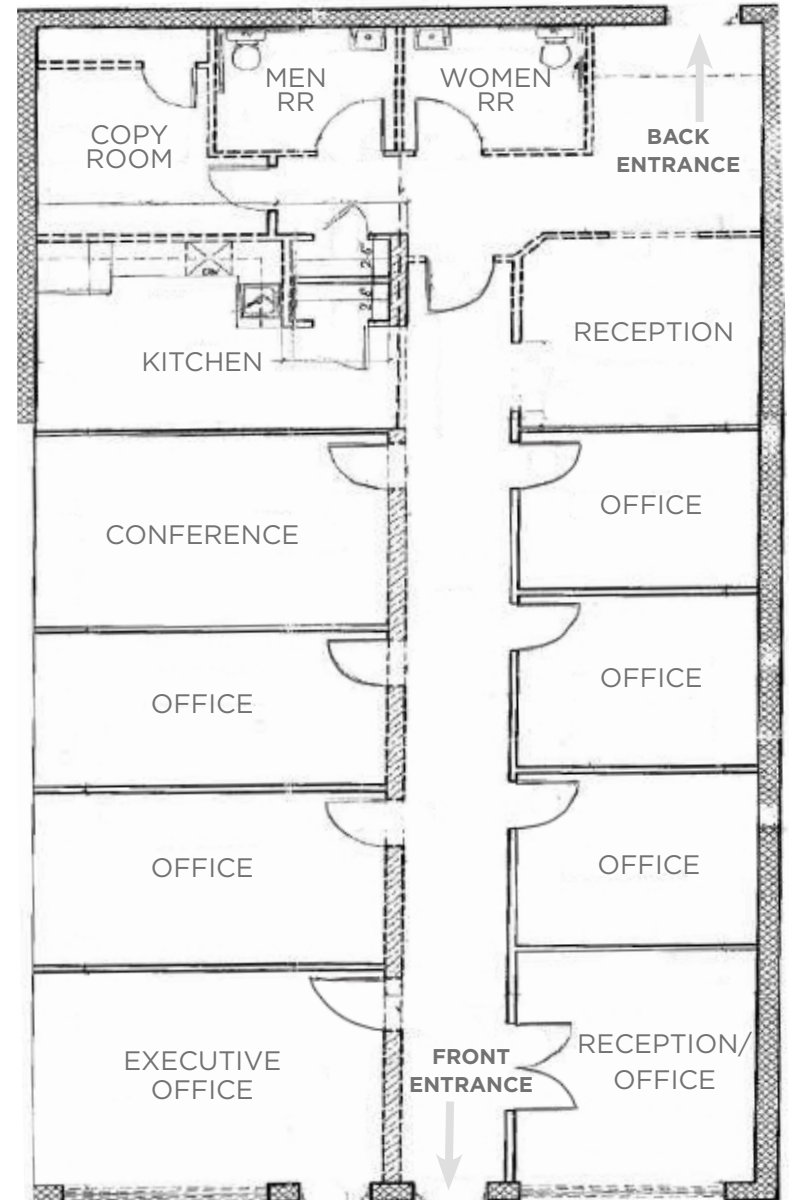
Population

\$103,868

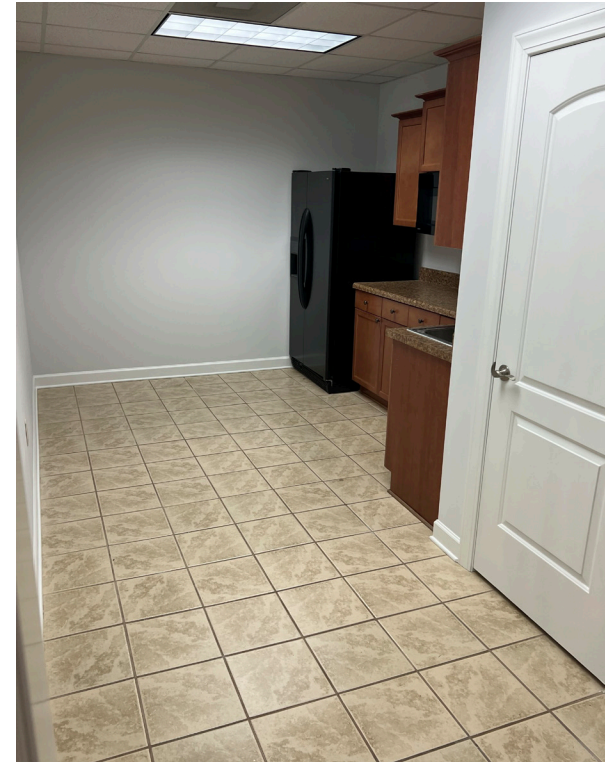
Avg Household Income

44.1

Median Age



INTERIOR PHOTOS



514-516 E NORTH STREET

AMENITIES MAP

FOOD

- ① Aryana Afghan Cuisine
- ② Fireforge Brewery
- ③ Greektown Grille
- ④ Chef 21 Sushi Burger & Korean BBQ

COFFEE/TEA

- ① Methodical Coffee
- ② Coffee Underground
- ③ Coffee Coffee
- ④ Feng Cha Tea

HOTELS

- ① Hyatt Regency Hotel
- ② Aloft Downtown
- ③ SpringHill Suites
- ④ Home2 Suites by Hilton





FOR MORE INFORMATION, CONTACT:

KYLE BERDUGO
Senior Associate
+1 864-704-1366
Kyle.Berdugo@cushwake.com

LAURA HARMON
Senior Associate
+1 864-704-1363
Laura.Harmon@cushwake.com



©2024 Cushman & Wakefield. All rights reserved. The information contained in this communication is strictly confidential. This information has been obtained from sources believed to be reliable but has not been verified. NO WARRANTY OR REPRESENTATION, EXPRESS OR IMPLIED, IS MADE AS TO THE CONDITION OF THE PROPERTY (OR PROPERTIES) REFERENCED HEREIN OR AS TO THE ACCURACY OR COMPLETENESS OF THE INFORMATION CONTAINED HEREIN, AND SAME IS SUBMITTED SUBJECT TO ERRORS, OMISSIONS, CHANGE OF PRICE, RENTAL OR OTHER CONDITIONS, WITHDRAWAL WITHOUT NOTICE, AND TO ANY SPECIAL LISTING CONDITIONS IMPOSED BY THE PROPERTY OWNER(S). ANY PROJECTIONS, OPINIONS OR ESTIMATES ARE SUBJECT TO UNCERTAINTY AND DO NOT SIGNIFY CURRENT OR FUTURE PROPERTY PERFORMANCE.