

AVAILABLE FOR SALE  
**PRICE: \$325,000**



OFFICE AVAILABLE

**2158 W EISENHOWER BLVD., SUITE B4, LOVELAND, CO 80537**

**1,102 SF**



2158 W EISENHOWER BLVD., SUITE B4, LOVELAND, CO 80537

# PROPERTY HIGHLIGHTS

Discover a unique opportunity to lease a versatile office space at 2158 W Eisenhower Blvd in Loveland, Colorado. This office is conveniently located near both professional and residential areas, making it ideal for a variety of businesses. The building is situated in a well-trafficked area, providing easy access. The spacious layout includes four private offices, a large conference room, and an inviting reception area with a waiting room. Schedule a showing today to envision your future in this exceptional office space!

Building Size: 1,102 SF

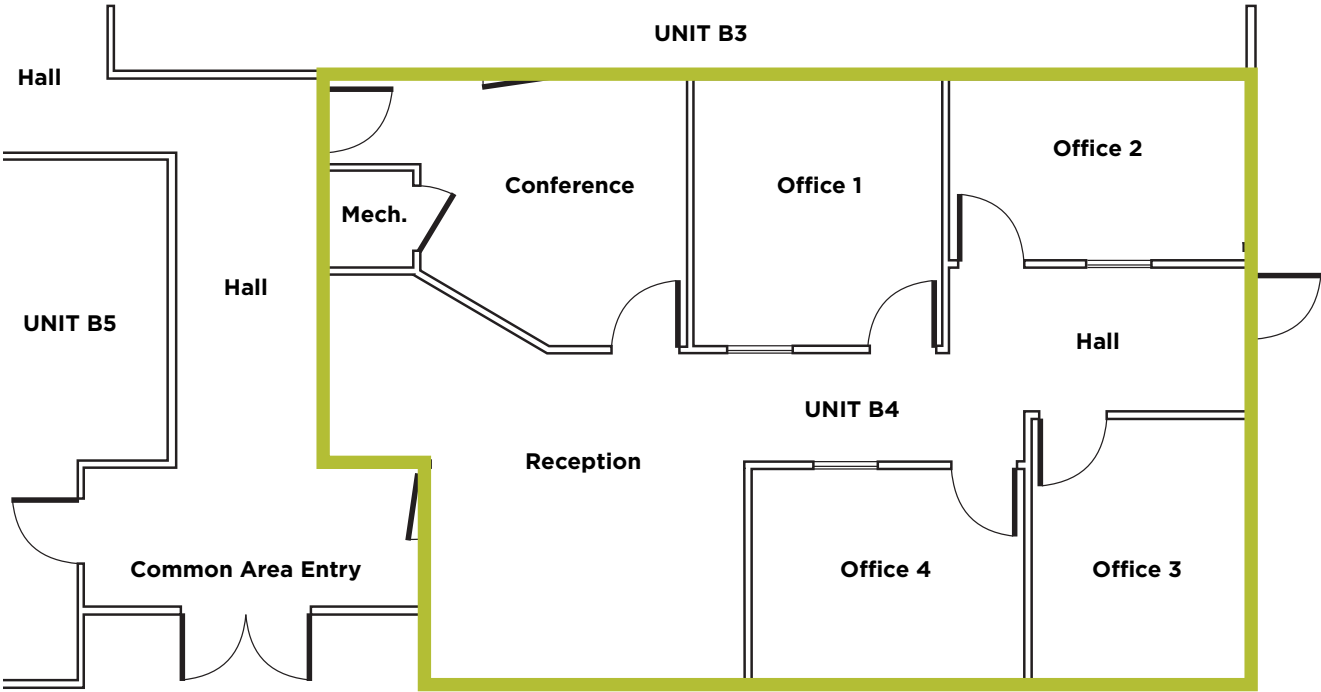
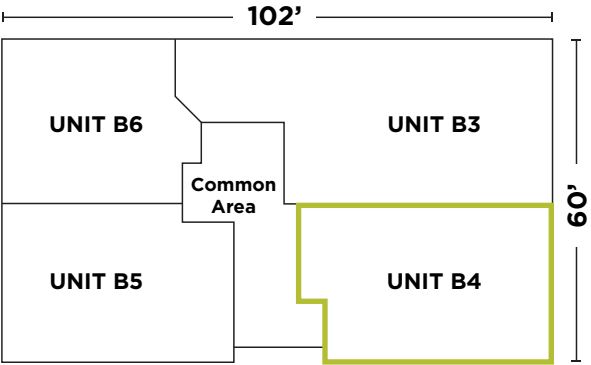
Parking: 45 spaces

Year Built: 1998

Private Offices: 4

Zoning: [B - Developing Business](#) 





FLOOR PLAN  
**1,102 SF**



**CONTACT INFORMATION**

**NATE HECKEL**  
 Senior Director  
 970 267 7724  
 nate.heckel@cushwake.com

**TYLER MURRAY**  
 Senior Director  
 970 267 7404  
 tyler.murray@cushwake.com

**TY MASHEK**  
 Senior Associate  
 303 525 3125  
 ty.mashek@cushwake.com

772 Whalers Way, Suite 200  
 Fort Collins, CO 80525  
 +1 970 776 3900  
 cushmanwakefield.com



©2024 Cushman & Wakefield. All rights reserved. The information contained in this communication is strictly confidential. This information has been obtained from sources believed to be reliable but has not been verified. NO WARRANTY OR REPRESENTATION, EXPRESS OR IMPLIED, IS MADE AS TO THE CONDITION OF THE PROPERTY (OR PROPERTIES) REFERENCED HEREIN OR AS TO THE ACCURACY OR COMPLETENESS OF THE INFORMATION CONTAINED HEREIN, AND SAME IS SUBMITTED SUBJECT TO ERRORS, OMISSIONS, CHANGE OF PRICE, RENTAL OR OTHER CONDITIONS, WITHDRAWAL WITHOUT NOTICE, AND TO ANY SPECIAL LISTING CONDITIONS IMPOSED BY THE PROPERTY OWNER(S). ANY PROJECTIONS, OPINIONS OR ESTIMATES ARE SUBJECT TO UNCERTAINTY AND DO NOT SIGNIFY CURRENT OR FUTURE PROPERTY PERFORMANCE